

FILED FOR RECORD: 9-8- 1986 at 11:00 o'clock A M
 DULY RECORDED: 9-9- 1986 at 9:00 o'clock A M
 INSTRUMENT NO. _____ GRACE BOSTICK, TYLER CO. CLERK
 Donece Gregory BY: Donece Gregory Deputy

TYLER COUNTY COMMISSIONER'S COURT
 SPECIAL MEETING
 August 15, 1986 --- 10:00 A.M.

VOL 012 PAGE 473

A Special Meeting of the Commissioner's Court met on Friday, August 15, 1986 at 10:00 A.M. All members being present with the exception of Commissioner Riley. The meeting was opened with prayer by Commissioner Jordan.

A motion was made by Commissioner Jordan to pay the bills as submitted by the County Auditor, Janie DuBose. Commissioner Graham seconded this motion. All voted yes and none no. SEE ATTACHED.

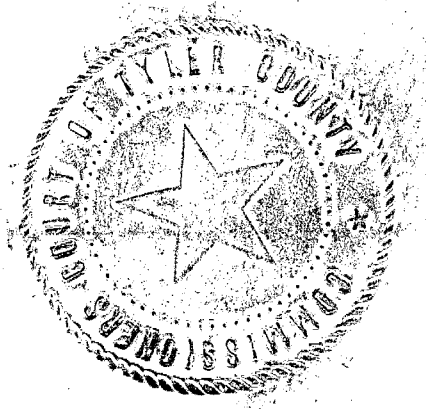
Commissioner Jordan made a motion to accept the bid from Harrell Machinery, Inc. of Lufkin, Texas for the backhoe for Precinct #4. The amount of bid, \$24,470.00, will be paid by cash from a Certificate of Deposit. Commissioner Graham seconded this motion. All voted yes and none no. SEE ATTACHED.

A motion was made by Commissioner Graham and seconded by Commissioner Barnes to accept the bid from Lufkin Typewriter for a 5005XL typewriter for the County Clerk's office. All voted yes and none no. SEE ATTACHED.

Commissioner Graham made a motion to put accepting a petition on the next agenda, to hard surface Forest Lake Road from Hwy. 190 North to Hensarling Road and from Hensarling Road West to the Old Doucette Road. Being a distance of approximately 3/4th of a mile. Commissioner Barnes seconded this motion. All voted yes and none no.

THERE BEING NO FURTHER BUSINESS, THE MEETING ADJOURNED.

SIGNED: Allen Sturrock Allen Sturrock, County Judge
Maxie L. Riley Maxie L. Riley, Comm. Pct. #1
A.M. Barnes A.M. Barnes, Comm. Pct. #2
Willis Graham Willis Graham, Comm. Pct. #3
James R. Jordan James R. Jordan, Comm. Pct. #4
 ATTEST: Grace Bostick Grace Bostick, County Clerk



----- G.L. ACCT. # / DESCRIPTION ----- REF. # TOTAL POSTED

GENERAL FUND

COMM. COURT APPROPRIATIONS

VOL 012 PAGE 474

1040108	POSTAGE FOR POSTAGE METER PITNEY BOWES, INC.	30103	96.75
1040109	PROBATION TELEPHONE SOUTHWESTERN BELL TELE CO AT&T INFORMATION SYSTEMS	30104 30105	50.28 57.46
1040115	SERVICE CONTRACTS INTERNATION BUS. MACHINES	30106	426.00
1040120	ASSOCIATION DUES DET COUNCIL OF GOVTS. COUNTY CLERK:	30107	1061.15
1040207	OFFICE SUPPLIES FAIRWAY FOODS GREAT WESTERN SUPPLY DIV. HIGHTOWER OFFICE SUPPLY ROGERS OFFICE SUPPLY	30108 30109 30110 30111	4.74 90.06 121.58 48.85
1040209	TELEPHONE SOUTHWESTERN BELL TELE CO AT&T INFORMATION SYSTEMS	30112 30113	74.50 62.97
1040218	LEASE EQUIPMENT 3M WST4322 XEROX CORPORATION	30114 30115	201.11 669.75
	VETERANS SERVICE		
1040509	TELEPHONE SOUTHWESTERN BELL TELE CO AT&T INFORMATION SYSTEMS DISTRICT CLERK	30116 30117	34.14 51.00
1040707	OFFICE SUPPLIES ROGERS OFFICE SUPPLY STAFFORD-LOWDON CO. STANDARD OFFICE EQUIP. WALRAVEN WESTERN DATA SERVICES, INC	30118 30119 30120 30121 30122	171.76 474.55 10.30 354.65 245.22
1040709	TELEPHONE SOUTHWESTERN BELL TELE CO	30123	125.49
1040718	LEASE EQUIPMENT XEROX CORPORATION JURY ACCOUNT	30124	308.50
1040855	COURT APPOINTED ATTORNEYS CLARK, JAMES A., ATTY.	30125	650.00

----- G.L. ACCT. # / DESCRIPTION ----- REF. # TOTAL POSTED

GENERAL FUND

VOL 012 PAGE 475

JURY ACCOUNT

CLARK, JAMES A., ATTY. 88TH JUDICIAL DISTRICT	30126	300.00
1040909 TELEPHONE		
SOUTHWESTERN BELL TELE CO	30127	33.17
AT&T INFORMATION SYSTEMS	30128	43.02
JUSTICE-OF-PEACE, PCT. I		
1041107 OFFICE SUPPLIES		
LUFKIN TYPEWRITER	30129	22.00
ROGERS OFFICE SUPPLY	30130	165.20
1041109 TELEPHONE		
SOUTHWESTERN BELL TELE CO	30131	197.82
AT&T INFORMATION SYSTEMS	30132	18.81
JUSTICE-OF-PEACE, PCT. II		
1041207 OFFICE SUPPLIES		
ROGERS OFFICE SUPPLY	30133	75.25
JUSTICE-OF-PEACE PCT. III		
1041307 OFFICE SUPPLIES		
ROGERS OFFICE SUPPLY	30134	75.25
1041309 TELEPHONE		
COLMESNEIL TELEPHONE CO.	30135	17.05
JUSTICE-OF-PEACE, PCT. IV		
1041407 OFFICE SUPPLIES		
ROGERS OFFICE SUPPLY	30136	75.25
1041409 TELEPHONE		
SOUTHWESTERN BELL TELE CO	30137	48.82
AT&T INFORMATION SYSTEMS	30138	7.23
CRIMINAL DISTRICT ATTORNEY		
1041907 OFFICE SUPPLIES		
PBCC	30139	455.67
SCHWAAB, INC	30140	42.94
OASES BLUEPRINT INC	30141	7.50
CALLAGHAN & COMPNAY	30142	117.60
PACE PUBLICATIONS	30143	147.00
LANIER BUSINESS PROD, INC	30144	172.00
ROGERS OFFICE SUPPLY	30145	186.74
1041909 TELEPHONE		
SOUTHWESTERN BELL TELE CO	30146	312.63

----- G.L. ACCT. # / DESCRIPTION ----- REF. # TOTAL POSTED

GENERAL FUND

CRIMINAL DISTRICT ATTORNEY

TAX OFFICE AT&T INFORMATION SYSTEMS 30147 62.00

1042007 SUPPLIES

HART-GRAPHICS 30148 72.81
LUFKIN TYPEWRITER 30149 32.50
ROGERS OFFICE SUPPLY 30150 154.00
R.L. POLK & CO., 30151 30.00

1042009 TELEPHONE

SOUTHWESTERN BELL TELE CO 30152 89.71
AT&T INFORMATION SYSTEMS 30153 76.98

1042018 LEASE EQUIPMENT

WESTERN DATA SERVICES, INC 30154 568.90
COUNTY JUDGE

1042107 OFFICE SUPPLIES

ROGERS OFFICE SUPPLY 30155 5.35

1042109 TELEPHONE

SOUTHWESTERN BELL TELE CO 30156 168.83
AT&T INFORMATION SYSTEMS 30157 19.12
COUNTY AUDITOR

1042207 OFFICE SUPPLIES

SCHWAAB, INC. 30158 39.49

1042209 TELEPHONE

AT&T INFORMATION SYSTEMS 30159 13.50
SOUTHWESTERN BELL TELE CO 30160 54.64
COUNTY TREASURER

1042307 OFFICE SUPPLIES

LUFKIN TYPEWRITER 30161 11.00
ROGERS OFFICE SUPPLY 30162 16.31
PAPER WORKS 30163 14.50

1042309 TELEPHONE

SOUTHWESTERN BELL TELE CO 30164 56.12
AT&T INFORMATION SYSTEMS 30165 3.65
SHERIFF DEPARTMENT

1042607 OFFICE SUPPLIES

JARROTT'S PHARMACY 30166 7.84
MONROE 30167 12.50
ROGERS OFFICE SUPPLY 30168 133.41

VOL 012 PAGE 476

----- G.L. ACCT. # / DESCRIPTION ----- REF. # TOTAL POSTED

GENERAL FUND

SHERIFF DEPARTMENT

VOL 012 PAGE 477

	WAL-MART STORE #283	30169	.57
1042609	TELEPHONE		
	SOUTHWESTERN BELL TELE CO	30170	551.74
	AT&T INFORMATION SYSTEMS	30171	151.02
1042624	TRAVEL & EDUCATION		
	SKINNER, WADE	30172	3.82
1042630	REPAIRS TO VEHICLES		
	ALLISON CHEVROLET CO.	30173	40.00
	THE TORQUE SHOP	30174	15.00
	WAL-MART STORE #283	30175	34.92
	WOODVILLE AUTO PARTS	30176	279.63
1042631	TIRES, TUBES		
	COOK TIRE & SERVICE CEN.	30177	353.60
	MODICA BROS.	30178	16.50
	TYLER COUNTY TRACTOR	30179	30.00
1042632	GAS, OIL, GREASE		
	CHEVRON U.S.A. INC.	30180	36.15
	DIAMOND SHAMROCK	30181	20.87
	GARDNER OIL CO., J.E.	30182	877.23
1042633	RADIO MAINTENANCE		
	BIG THICKET COMMUNICAT.	30183	263.25
	LUMBERTON TOWER SERVICE	30184	139.80
	RACAL-MILGO	30185	182.00
	SARGENT-SOWELL, INC.	30186	311.32
1042637	CAMERAS, FILM		
	JARROTT'S PHARMACY	30187	10.67
	WAL-MART STORE #283	30188	218.00
1042641	UNIFORMS		
	JEFFERSON CLEANERS	30189	224.50
	TYLER COUNTY JAIL		
1042707	JAIL SUPPLIES		
	DOLLAR GENERAL STORE	30190	40.00
	MIKE MCCULLEY	30191	5.25
	WAL-MART STORE #283	30192	72.34
1042736	PRISONERS MEALS		
	DUNAGAN WAREHOUSE CORP.	30193	54.38
	FAIRWAY FOODS	30194	511.68
1042798	MEDICAL & MISC. JAIL EXPENSE		
	JARROTT'S PHARMACY	30195	23.55
	DEPT. OF PUBLIC SAFETY		
1043009	TELEPHONE, DPS & P&W		
	SOUTHWESTERN BELL TELE CO	30196	186.03

----- G.L. ACCT. # / DESCRIPTION ----- REF. # TOTAL POSTED

GENERAL FUND

VOL 012 PAGE 478

DEPT. OF PUBLIC SAFETY

	SOUTHWESTERN BELL TELE CO	30197	22.19
1043038	UTILITIES		
	GULF STATES UTILITIES	30198	123.05
	HEALTH & SANITATION		
1043649	AID TO INDIGENTS		
	JARROTT'S PHARMACY	30199	39.95
	TILLERY'S CONOCO STATION	30200	7.70
	SENIOR CITIZENS OFFICE		
1043707	OFFICE SUPPLIES		
	LUFKIN TYPEWRITER	30201	75.50
	U.S. POSTMASTER	30202	22.00
	WAL-MART STORE #283	30203	1.41
1043712	TRAINING & EDUCATION		
	WHIGHAM, IRIS	30204	29.52
1043732	GAS & OIL		
	JACKSONS PETROLEUM PRODS.	30205	166.57
	WAL-MART STORE #283	30206	3.47
1043738	UTILITIES		
	SOUTHWESTERN BELL TELE CO	30207	42.67
	COUNTY EXTENSION OFFICE		
1043907	OFFICE SUPPLIES		
	ROGERS OFFICE SUPPLY	30208	19.90
1043909	TELEPHONE		
	SOUTHWESTERN BELL TELE CO	30209	140.02
	AT&T INFORMATION SYSTEMS	30210	10.95
	TYLER COUNTY AIRPORT		
1044130	REPAIRS, MOWING		
	SULLIVANS HARDWARE	30211	3.92
1044138	UTILITIES		
	SOUTHWESTERN BELL TELE CO	30212	17.57
	BUILDING MAINTENANCE		
1044207	JANITORS SUPPLIES		
	BANCROFT, INC.	30213	83.15
	SULLIVANS HARDWARE	30214	93.25
	SULLIVANS HARDWARE	30215	4.14
	TILLERY'S CONOCO STATION	30216	3.31

----- G.L. ACCT. # / DESCRIPTION ----- REF. # TOTAL POSTED

GENERAL FUND

BUILDING MAINTENANCE

1044238	COURTHOUSE UTILITIES		
	CITY OF WOODVILLE	30217	179.95
	CITY OF WOODVILLE	30218	12.00
	GULF STATES UTILITIES	30219	50.35

TOTAL CREDIT TO A/P 15,361.28- REF. # 30220

VOL 012 PAGE 479

----- G.L. ACCT. # / DESCRIPTION ----- REF. # TOTAL POSTED

ROAD & BRIDGE I

OPERATING EXPENSES

2145128	MACHINERY MAINTENANCE		
	A-Z DISCOUNT AUTO PARTS	30221	37.20
	BRANCH MACHINE SHOP	30222	10.06
	COLLINS TIRE	30223	45.95
	C&M REPAIR SERVICE	30224	221.20
	DURHAM AUTO ELECTRIC	30225	77.00
	DURHAM SAW COMPANY	30226	61.45
	HARRELL MACHINERY, INC.	30227	21.75
	GEORGE P. BANE, INC.	30228	2140.94
	JO-BE EQUIPMENT CO.	30229	10.50
	MUSTANG TRACTOR	30230	660.50
	WILLS, JAMES W..	30231	240.00
	WOODVILLE AUTO PARTS	30232	1873.95
2145129	GAS, OIL, GREASE		
	A-Z DISCOUNT AUTO PARTS	30233	8.50
	JACKSONS PETROLEUM PRODS.	30234	522.25
	WOODVILLE AUTO PARTS	30235	31.20
2145130	TIRES, TUBES		
	GREENWOOD EXXON	30236	5.00
	MODICA BROS.	30237	158.90
2145131	CULVERTS		
	FREEMANS HARDWARE	30238	2135.40
2145133	BRIDGE REPAIR		
	DAVIS FOOD MARKET	30239	11.34
2145135	UTILITIES		
	GULF STATES UTILITIES	30240	35.49
	SENACA WATER SUPPLY CORP.	30241	9.00
2145138	CONTRACT LABOR/LANDFILL		
	BOB RAWLS	30242	1260.00
2145140	MISCELLANEOUS SUPPLIES		
	HOLDERMANS BUILDING CENT.	30243	23.46
	S. MAGNOLIA DRIVE IN GRD.	30244	76.60
	SULLIVANS HARDWARE	30245	41.25
	TRIANGLE EQUIPMENT	30246	106.00
	WOODVILLE AUTO PARTS	30247	78.65

VOL 012 PAGE 480

TOTAL CREDIT TO A/P

9,903.54-

REF. # 30248

----- G.L. ACCT. # / DESCRIPTION ----- REF. # TOTAL POSTED

ROAD & BRIDGE II

OPERATING EXPENSES

VOL 012 PAGE 481

2245128	MACHINERY MAINTENANCE		
	BIG THICKET COMMUNICAT.	30249	95.00
	DURHAM SAW COMPANY	30250	56.60
	GULF WELDING	30251	8.00
	HICKMAN'S SALES & SERVICE	30252	101.95
	BILLY MARK JONES	30253	72.50
	MUSTANG TRACTOR	30254	1024.34
	WOODVILLE AUTO PARTS	30255	107.45
2245129	GAS, OIL, GREASE		
	GARDNER OIL CO., J.E.	30256	306.04
2245130	TIRES, TUBES		
	OWENS EXXON	30257	26.00
2245131	CULVERTS		
	FREEMANS HARDWARE	30258	1205.52
2245132	ROAD MATERIAL		
	MARSHALL ROCK CO.	30259	400.00
	TYCO FEED	30260	71.50
2245135	UTILITIES		
	CHESTER WATER SUPPLY COR.	30261	9.00
2245138	CONTRACT LABOR		
	KENNETH A. BAKER	30262	40.00
	E.M. FORTENBERRY	30263	990.00
2245140	MISCELLANEOUS SUPPLIES		
	HOLDERMANS BUILDING CENT.	30264	66.02
	HICKMAN'S SALES & SERVICE	30265	19.95
	SULLIVANS HARDWARE	30266	64.39

TOTAL CREDIT TO A/P

4,664.26-

REF. # 30267

----- G.L. ACCT. # / DESCRIPTION ----- REF. # TOTAL POSTED

ROAD & BRIDGE III

OPERATING EXPENSES

2345128	MACHINERY MAINTENANCE		
	ETOX, INC.	30268	37.31
	GEORGE P. BANE, INC.	30269	500.00
	HARRELL MACHINERY, INC.	30270	128.36
	TURNERS RADIATOR	30271	12.50
	TIMBERMANS SUPPLY	30272	347.04
2345129	GAS, OIL, GREASE		
	GARDNER OIL CO., J.E.	30273	1415.54
2345130	TIRES, TUBES		
	COLLINS TIRE	30274	30.00
	GREENWOOD EXXON	30275	26.00
	JASPER TIRE & DIST.CO.	30276	450.70
	OWENS EXXON	30277	35.00
2345131	CULVERTS		
	FREEMANS HARDWARE	30278	105.80
2345135	UTILITIES		
	COLMESNEIL TELEPHONE CO.	30279	59.37
	GULF STATES UTILITIES	30280	45.97
2345140	MISCELLANEOUS SUPPLIES		
	DAVIS GROCERY STORE	30281	60.57
	GRAHAMS GROCERY	30282	26.63
	OWENS EXXON	30283	22.00

TOTAL CREDIT TO A/P 3,302.79- REF. # 30284

VOL 012 PAGE 482

----- G.L. ACCT. # / DESCRIPTION ----- REF. # TOTAL POSTED

ROAD & BRIDGE IV

OPERATING EXPENSES

VOL 012 PAGE 483

2445128	MACHINERY MAINTENANCE		
	GULF WELDING	30285	20.00
	GEORGE P. BANE, INC.	30286	6236.41
	MODICA BROS.	30287	681.91
	MUSTANG TRACTOR	30288	686.00
	SPURGER GULF STATION	30289	24.54
	TURNERS RADIATOR	30290	125.00
2445129	GAS, OIL, GREASE		
	GARDNER OIL CO., J.E.	30291	1037.50
	SPURGER GULF STATION	30292	48.00
2445130	TIRES, TUBES		
	JASPER TIRE & DIST.CO.	30293	465.88
	SPURGER GULF STATION	30294	14.50
2445131	CULVERTS		
	FREEMANS HARDWARE	30295	126.96
2445132	ASPHALT & ROAD OIL		
	DAVIDSON CONST.MATERIALS	30296	605.55
2445135	UTILITIES		
	GULF STATES UTILITIES	30297	48.20
	SOUTHWESTERN BELL TELE CO	30298	33.82
	TYLER COUNTY WATER SUPPLY	30299	16.50
2445140	MISCELLANEOUS SUPPLIES		
	JORDAN, JAMES R.	30300	49.90
	MCINNIS HARDWARE	30301	107.29
	SPURGER GULF STATION	30302	10.00
	SPURGER MERCANTILE	30303	29.42
	CAPITAL OUTLAY		
2445345	PURCHASE OF EQUIPMENT		
	REPUBLIC BANK TYLER	30304	1042.65

TOTAL CREDIT TO A/P

11,410.03-

REF. # 30305

8/14/86

GENERAL LEDGER DISTRIBUTION REGISTER

PAGE 11

----- G.L. ACCT. # / DESCRIPTION ----- REF. # TOTAL POSTED

GENERAL REVENUE SHARING

CULTURE & RECREATION:

3047226	KIRBY MUSEUM MAINTENANCE		
	GULF STATES UTILITIES	30306	7.00

TOTAL CREDIT TO A/P 7.00- REF. # 30307

VOL 012 PAGE 484

----- G.L. ACCT. # / DESCRIPTION ----- REF. # TOTAL POSTED

LIBRARY FUND

MISCELLANEOUS:

3649250	LIBRARY BOOKS & SUPPLIES		
	SOUTHWESTERN BELL TELE CO	30308	22.19
	AT&T INFORMATION SYSTEMS	30309	13.80

VOL 012 PAGE 485

TOTAL CREDIT TO A/P 35.99- REF. # 30310

----- G.L. ACCT. # / DESCRIPTION ----- REF. # TOTAL POSTED

JAIL CAPITAL PROJECT FUND

CAPITAL OUTLAY

4445830 ENGINEERING / ARCHITECTURAL 30311 16913.32
 EVERETT GRIFFITH, JR. ASSOC

VOL 012 PAGE 486

TOTAL CREDIT TO A/P 16,913.32- REF. # 30312

----- G.L. ACCT. # / DESCRIPTION -----

REF. # TOTAL POSTED

DATA PROCESSING FUND

OPERATING EXPENSES

4545145	COUNTY AUDITORS LEASE INTERNATION BUS. MACHINES	30313	619.42
4545146	ADULT PROBATION LEASE INTERNATION BUS. MACHINES	30314	500.00

TOTAL CREDIT TO A/P	1,119.42-	REF. # 30315	
---------------------	-----------	--------------	--

VOL 012 PAGE 487

----- G.L. ACCT. # / DESCRIPTION ----- REF. # TOTAL POSTED

CAPITOL IMPROVEMENT FUND

BUILDING MAINTENANCE

4644230	REPAIRS TO BUILDING		
	AYRES PLUMBING	30316	270.78
	COWARD, JOEL M.	30317	70.87
4644233	ELEVATOR REPAIRS		
	ALLIED ELEVATOR, INC	30318	198.00

TOTAL CREDIT TO A/P 539.65- REF. # 30319

VOL 012 PAGE 488

----- G.L. ACCT. # / DESCRIPTION ----- REF. # TOTAL POSTED

ADULT PROBATION FUND

OPERATING EXPENSES

5345107	SUPPLIES & OTHER OPERATING EXP		
	KINGSLEY, JERRY	30320	220.40
	SOUTHWESTERN BELL TELE CO	30321	46.46

VOL 012 PAGE 489

TOTAL CREDIT TO A/P 266.86- REF. # 30322

----- G.L. ACCT. # / DESCRIPTION -----

REF. # TOTAL POSTED

JUVENILE PROBATION FUND

OPERATING EXPENSES

5445107 SUPPLIES & OTHER OPERATING EXP
SOUTHWESTERN BELL TELE CO

30323

24.62

VOL 012 PAGE 490

TOTAL CREDIT TO A/P

24.62-

REF. # 30324

MINIMUM SPECIFICATIONS FOR AN INDUSTRIAL
RUBBER TIRED WHEEL LOADER BACKHOE
TYLER COUNTY PRECINCT IV.

VOL 012 PAGE 491

GENERAL: It is the intent of this specification to describe minimum requirements for an industrial wheel loader with unitized main frame design and center mounted rear backhoe. The unit must be a new, unused model that is in current production. Units that are classified as demonstrator, prototype or discontinued models are not acceptable. Modifications of existing models to meet these specifications will not be accepted. All equipment and accessories catalogued as standard shall be included as part of this specification. Models bid must comply with ICED and SAE standards and meet OSHA, Federal and State regulations.

1. OPERATING WEIGHT: The complete unit in a fully serviced condition including fuel, oil, water and other standard accessories shall not be less than 12,200 pounds, nor more than 13,500 pounds. This weight shall not include hydro-inflation in the tires, additional counter weights or optional equipment even if specified.
2. ENGINE: The engine shall have a minimum SAE rating of 62 net horsepower at 2,200 RPM. The diesel engine shall be water cooled, direct injection, four stroke cycle, four cylinder, wet sleeve design, having not less than 230 cubic inch displacement. No derating shall be required up to 5,000 feet altitude.

The engine shall be equipped with the following minimum items:

- A. A direct 12 volt starting system with a 50 amp alternator.
 - B. An ether starting aid suitable for starting in weather-10°F
 - C. Heavy duty pressure lubricating system with full flow oil filters.
 - D. A replaceable dry-type air cleaner with safety element and air restriction indicator.
 - E. Replaceable fuel filter element.
 - F. Fuel pump that can be manually used to prime the fuel system.
 - G. Governor.
 - H. A vertical muffler with exhaust extension and raincap.
 - I. All other manufacturer's standard accessories necessary for full protection of the engine's operation.
3. TRANSMISSION : The unit shall be equipped with a torque converter and manual shift transmission. The transmission must incorporate a power shuttle for shifting into forward and reverse direction without clutching for loader operations. The transmission will provide at least four forward and four reverse speeds. An oil to air cooler must be provided for the reverser/torque converter system.

4. DIFFERENTIAL AND FINAL DRIVES: The manufacturer's standard differential shall incorporate a mechanical differential lock that can be engaged on the go in either forward or reverse direction. The final drives to be planetary design located inboard next to the differential housing.
5. BRAKES: The unit shall be equipped with rear wheel service brakes that are oil disc type, self adjusting, self equalizing and can be either individually or simultaneously applied. The service and park brake must be capable of holding the unit when fully loaded. The park brake shall be either foot or hand operated. Both service and park brakes must meet all SAE-J1152 standards for braking. The unit will be equipped with an audible and visual warning system to be activated when park brake is engaged and reverser is placed in forward or reverse.
6. AXLES AND TREAD WIDTH: The minimum wheel base that will be accepted is 83 inches. Minimum front tread width shall be 69 inches; minimum rear axle tread width shall be 64 inches. The minimum SAEJ43 axle rating for the front axle is 9,800 pounds and the rear axle is 12,500 pounds.
7. TIRES: The tractor shall be equipped with two industrial type (F3) front tires and two general purpose traction tread (R4) rear tires of a size and ply rating compatible with the full loaded weight of the unit as specified. To be not less than the minimum specifications noted-
 - A. Front-11L X 15, 8 ply (F3)
 - B. Rear- 16.9 X 24, 8 ply (R4)
8. HYDRAULICS: The hydraulic system as normally provided by the manufacturer shall be of size, type and capacity to perform all required operations of the tractor, the loader and backhoe. Minimum flow to backhoe control valve shall be 32 GPM at rated engine speed. The hydraulic system must meet the minimum requirements of having a hydraulic oil to air cooler to prevent oil from exceeding recommended operating temperature. Must have a pressure relief valve, 10 micron oil filter(s), and a reservoir with visual oil level indicator. All hydraulic fittings shall be of the o-ring face seal design to minimize leakage.
9. OPERATOR'S STATION: The operator station shall have a "flat deck" design with a cushioned seat with arm and back rest for use with both the tractor loader and backhoe. Adequate hand rails and self cleaning steps must be provided for easy entry into the operator's station. A seat belt meeting the requirements of SAE-J386 is required. Instrumentation gauges to be grouped to facilitate easy visibility when sent in loader or backhoe position. The type of structure needed- a four (4) post roll-over protection structure (ROPS) with canopy for over-head (FOPS) protection meeting the requirements of SAE-J1040C. Unit shall be equipped with a lockable vandal protection cover to completely cover the instrument panel.

10. INSTRUMENTATION: The unit shall be equipped with a fuel gauge tachometer, and electric hourmeter. In addition it shall have an audible and visual electronic monitoring system for engine oil pressure, engine coolant temperature and park brake engagement. This monitoring system will also incorporate a visual monitoring system for the alternator, hydraulic filter and torque converter temperature. The electric instrumentation system shall include a simple method to allow the operator to check the operating of all light bulbs.
11. LOADER: The tractor shall be equipped with an industrial type front-end loader. The loader shall have a general purpose bucket rated at one (1) cubic yard heaped capacity. The cutting width of the bucket shall be at least that of the front and rear tire width. The loader to be operated by a single lever with a float position. The bucket, as it is being raised to the full height position, must be self-leveling either by mechanical or hydraulic means. A bucket level indicator must be provided. The loader shall meet or exceed the following minimum specifications:
- A. Lift capacity at full height- 5,100 pounds.
 - B. Breakout force- 8,100 pounds.
 - C. Dump height clearance at 45 degrees- 8 feet 10 inches.
 - D. Rollback at ground level- 40 degrees.
 - E. Digging depth below ground level- 4 inches.
12. BACKHOE: The tractor shall be equipped with a rear center mounted fixed hydraulic backhoe. The backhoe to be operated by dual levers for raise, lower, swing and bucket functions. The stabilizers are to be individually controlled and shall be equipped with pivoting dirt or reversible pads. A positive mechanical locking device for boom and swing is required while in the transport position. Chains for locking boom in transport position are not acceptable. The backhoe in the normal setting shall meet these minimum specifications:
- A. SAE digging depth with a 2 foot bottom- 14 feet 2 inches.
 - B. Swing arc- 180 degrees.
 - C. Minimum lifting capacity per SAEJ31 with boom at 65 degrees- 3,900 pounds.
 - D. Minimum bucket digging force- 10,800 pounds.
 - E. Minimum reach from center of swing mast- 17 feet 6 inches.
 - F. Bucket size- 24 inch bucket (8.8 cu. ft.) (heaped capacity)
13. ACCESSORIES AND ADDITIONAL EQUIPMENT: The tractor shall be equipped with, but not limited to, the following items;
- A. Hydrostatic power steering.
 - B. Rear fenders.
 - C. Vandal protection package with built-in locks on engine, fuel tank and coolant fill point.
 - D. Foot and hand throttle shall be provided.
 - E. Two front Halogen headlights.
 - F. One rear tail light.
 - G. Electric back-up alarm.
 - H. Electrical system shall be multiple fuse protected and shall be easily accessible in the operator's compartment. Fuses shall be color coded, spade-type for easy identification and removal.

I. Reversible stabilizer pads.

14. PAINTING: The complete unit , with the exception of trim shall be painted manufacturer's standard color.
15. MANUALS: One (1) each of the operator's manual, parts catalog and technical manual shall be provided with each unit at the time of delivery. Manuals shall totally cover in detail maintenance, operation, replacement parts and technical data to repair the tractor, loader and backhoe.
16. WARRANTY: The manufacturer must warrant the entire unit from defective parts and workmanship for a minimum of 6 months from date unit is placed into service, with an additional 1½ year power train warranty (total of 2 years). A copy of the warranty policy outlining the terms and conditions to be included in the proposal.
- 17 DELIVERY: Complete printed literature, publications and photo of the unit proposed must be included with each bid. Each bidder shall specify the delivery date which shall not be more than 30 days after receipt of purchase order. Delivery shall be made to the department after all "pre-delivery" services have been performed.

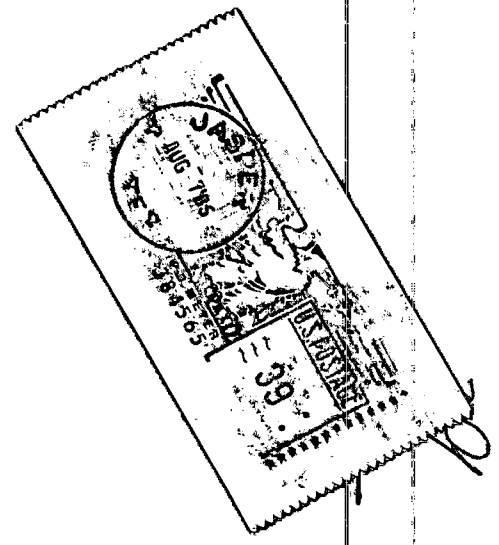
BID WITH AND WITHOUT TRADE-IN. TRADE-IN CAN BE SEEN AT THE COUNTY PRECINCT IV BARN IN SPURGER. WILL CONSIDER LEASE/PURCHASE OR CASH. BIDS WILL BE OPENED AT THE REGULAR COMMISSIONERS COURT MEETING ON AUGUST 11, 1986 at 10:00 A.M.

COVERT'S
P.O. BOX 266
HIGHWAY 96 NORTH
JASPER, TEXAS 75951

VOL 012 PAGE 495

Equipment Bid
August 11, 1986 - 10:00 a.m.

Jyler Country Precinct IV
100 Court House
Woodville, Texas 75979



11:00 AM

OFFICE OF THE COUNTY CLERK
JASPER, TEXAS
C. J. [Signature]

August 6, 1986

VOL 012 PAGE 496

Tyler County Precinct IV
100 Court House
Woodville, TX 75979

Gentlemen:

We are pleased to submit the following quote on a loader-backhoe. This machine meets or exceeds most of your specifications.

- 1 - New Case 580 Super E Loader-backhoe
 - s/n 17036010 or s/n 17036009
 - Case 63 H.P. diesel engine
 - Power shuttle transmission with torque converter
 - ROPS canopy
 - 11L x 16 10 ply F3 front tires
 - 17.5L x 24 8 ply R4 rear tires
 - 1 cubic yard long lip loader bucket
 - 1 - 24" HD trenching bucket
 - Full lighting system
 - Back-up alarm
 - Lock-up kit
 - Operators manual, parts book & service manual

All other equipment will be listed on standard specifications. Spec. sheet attached.

The basic machine carries the standard 12 months warranty on parts and labor. The engine warranty is 24 months or 2000 hours, whichever comes first.

Your price FOB Woodville, TX - \$26,032.00 without trade.

These machines are now in inventory and delivery would be one day subject to the machines being in stock.

Your consideration of Case equipment and our dealership is appreciated.

Sincerely,



W. E. Lovett

WEL:del



MODEL 580 SUPER E Loader/Backhoe

Choice of 2-wheel or 4-wheel-drive

Case 63 net horsepower (47 kW) diesel

Lift to 5155 lbs (2338 kg), dig to 18'8" (5.69 m)



580 SUPER E BASIC TRACTOR

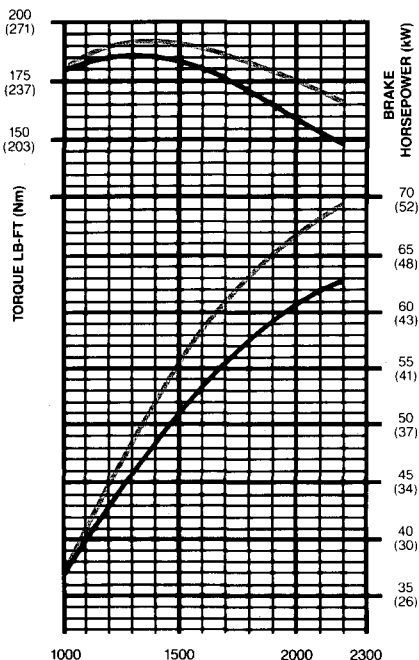
ENGINE

Make and model	Case 4-390
Type of fuel	No. 2 diesel
No. of cylinders	4
Bore and stroke	4.02" x 4.72" (102 mm x 120 mm)
Displacement	239 in ³ (3917 cm ³)
Compression ratio	17.3:1
Fuel induction	Injectors
Fuel supply	Injection pump
Air cleaner	Dry type — replacement element
Oil filter	Replaceable spin-on cartridge, full flow
Lubrication	Positive pressure
Cooling system	Pressurized — 14 psi (96 kPa)
Horsepower	
Gross (1)	69 @ 2200 rpm (51 kW @ 2200 r/min)
SAE Net (2)	63 @ 2200 rpm (47 kW @ 2200 r/min)
Max torque ft-lb	
Gross (1)	186 @ 1200 rpm (252 Nm @ 1200 r/min)
SAE Net (2)	181 @ 1200 rpm (245 Nm @ 1200 r/min)

(1) Gross engine horsepower or torque at flywheel per SAE Standard J1349.

(2) Net engine horsepower or torque at flywheel per SAE Standard J1349.

POWER CURVE



ENGINE SPEED—RPM (r/min)

GROSS ENGINE PERFORMANCE

NET ENGINE PERFORMANCE

ELECTRICAL

System voltage	12 volts, negative ground
Battery	Maintenance free, 700 cold cranking amps at 32°F (0°C)
Alternator	42 amp

POWER TRAIN

Transmission: Full power shuttle and torque converter, 4 speed; sliding spur gear in 1st and 2nd. Synchronesh in 3rd and 4th permits on-the-go shifting up from 2nd to 3rd to 4th and back down from 4th to 3rd.

Torque converter: Single stage hydrokinetic type (2.78 to 1 ratio).

Reversing unit: Power hydraulic clutches.
Brakes: Individual or simultaneous foot actuated, hydraulic actuated wet disc brakes (five brake disc and four fixed steel plates). Over-center hand-operated dry disc parking brake.

Final drives:
Front (4-WD) outboard planetaries
Rear multiple gear reduction

4-wheel drive: operator engaged front wheel mechanical drive by lever located next to operator's seat.

AXLES RATINGS (Manufacturer's)

Front (2-WD)	11,500 lbs (5216 kg)
(4-WD)	12,500 lbs (5670 kg)
Rear	13,500 lbs (6123 kg)

AXLE OSCILLATION

Front (2-WD)	22°
(4-WD)	23°
Rear	Fixed

STEERING

Power steering Hydrostatic
Hydraulic pump Front mounted, positive displacement, gear type, tandem pump

Pump capacity 7 gpm @ 2200 rpm @ 2200 psi

(26 l/min @ 2200 r/min @ 13 790 kPa)
Main relief setting 2100 ± 50 psi (14 479 ± 345 kPa)

Turning ratio (stop to stop) 2.75 turns

Steering cylinders, double acting (2) 1.5" dia x 6.5" stroke (38 mm dia x 165 mm stroke)

SERVICE CAPACITIES

	U.S.	Litres
Cooling System		
w/heater	18.9 qt	17.9
w/o heater	18.2 qt	17.2
Fuel tank	26.5 gal	100
Engine oil		
w/filter	11 qt	10.4
Power shuttle	8 qt	7.6
Transaxle	20 qt	18.9
Hydraulic reservoir		
w/filter	12.5 gal	47.3
w/o filter	12 gal	45.4
total system	23.75 gal	89.9
Planetaries—		
each (4-WD)	1.5 qt	
Differential (4-WD)	7 qt	6.6
Transfer Case (4-WD)	1 pt	.5

TRAVEL SPEEDS — MPH (km/h)

Engine at full throttle, 17.5L x 24, R4 rear tires.

	1st	2nd	3rd	4th
Forward	3.5 (5.6)	6.5 (10.5)	12.2 (19.6)	21.8 (35.1)
Reverse	3.1 (5.0)	6.0 (9.7)	11.1 (17.9)	19.6 (31.5)

580 SUPER E TIRES

Size	Ply Rating	Tread	Pressure PSI (kPa)
FRONT			
7.50x16	10	I1	56 (386)
8.00x16	10	F3	56 (386)
11Lx16	10	F3	48 (331)
12x16.5	6	Lug	45 (310)
12x16.5	8	Lug	60 (414)
REAR			
14.9x24	6	R4	20 (138)
14.9x24	8	R4	24 (165)
16.9x24	6	R4	18 (124)
16.9x24	8	R4	24 (165)
*16.9x24	10	R4	28 (193)
17.5Lx24	6	R4	16 (110)
17.5Lx24	8	R4	22 (152)
*17.5Lx24	10	R4	28 (193)

*Must be used on machines equipped with Extendahoe. May also be used on machines equipped with non-extendable backhoe.

TURNING CLEARANCE CIRCLE (Tractor only)

With brakes—2-WD	21'2" (6.45 m)
Without brakes—2-WD	24'1" (7.34 m)
With brakes—4-WD	25'11" (7.9 m)
Without brakes—4-WD	32'10" (10.0 m)

580 SUPER E LOADER

HYDRAULIC SYSTEM

Hydraulic pump: Front mounted, positive displacement, gear type, tandem pump.

Pump capacity:

23 gpm @ 2200 rpm @ 2000 psi
(87 l/min @ 2200 r/min @ 13 790 kPa).

Control valve main relief pressure: 2450 psi (16 892 kPa).

Filtration: 10 micron, full flow replaceable cartridge on return line. Condition indicator light for filter.

Loader control valve: Mono-cast two or three spool. Single lever control for lift and tilt. Lift lever has positive hold "float" position and "return-to-dig" feature.

Hydraulic lines: Steel tubing with brazed or flared fittings and wire braid, high pressure hose with crimped, full flow fittings.

Loader cylinders:

Lift (2)...3" dia x 31.5" stroke, 1.75" rod
(76 mm dia x 800 mm stroke, 44 mm rod)

Tilt (2)...2.5" dia x 20" stroke, 1.5" rod
(64 mm dia x 508 mm stroke, 38 mm rod)

Clam (2)...3" dia x 9" stroke, 1.75" rod
(76 mm dia x 229 mm stroke, 44 mm rod)

LOADER BUCKET SIZES

(Capacities SAE)

Width In m	Type	Heaped		Struck	
		yd ³	m ³	yd ³	m ³
74	1.88 Short lip	.78	.60	.67	.50
82	2.08 Long lip	1.00	.76	.87	.67
82	2.08 4-in-1	1.00	.76	.81	.62

THREE POINT MOD HITCH

Hydraulic pump: Front mounted, positive displacement, gear type, tandem pump.

Pump capacity:

23 gpm @ 2200 rpm @ 2000 psi
(87 l/min @ 2200 r/min @ 13 790 kPa)

Main relief pressure: 1800 PSI (12 411 kPa)

Control valve: 4 spool sectional valve for hydraulic control of lift, tilt, pitch and auxiliary with "float" detent in the lift spool. Single spool sectional valve for hydraulic control of lift and mechanical adjustment of tilt and pitch.

Mod hitch cylinders:

Lift (1) . . . 3" dia x 8.4" stroke, 1.5" rod
(76 mm x 214 mm stroke, 38 mm rod)

Tilt (1) . 2.5" dia x 6.3" stroke, 1.25" rod
(64 mm x 160 mm stroke, 32 mm rod)

Pitch (1) . 2.5" dia x 7" stroke, 1.25" rod
(64 mm x 178 mm stroke, 32 mm rod)

Lift capacity

at end of lift arm 5197 lbs (2362 Kg)

at 24" (610 mm) behind

hitch point 2850 lbs (1295 Kg)

TURNING CLEARANCE CIRCLE

Bucket rollback — hinge pin at SAE carry position 1.0 yd³ (.76m³) Bucket

2-wheel drive

With brakes 30'8" (9.35 m)

Without brakes 33' (10.1 m)

4-wheel drive

With brakes 33'8" (10.3 m)

Without brakes 39'9" (12.1 m)

OPERATIONAL DATA

	General Purpose Bucket			4-in-1® Bucket	
	SHORT LIP 2-WD	LONG LIP 2-WD	LONG LIP 4-WD	(2-WD)	(4-WD)
Lift capacity to full height.	5155 lbs (2338 kg)	5155 lbs (2338 kg)	5155 lbs (2338 kg)	4390 lbs (1991 kg)	4390 lbs (1991 kg)
Height to bucket hinge pin-raised.	10'9" (3.28 m)	10'9" (3.28 m)	10'9" (3.28 m)	10'9" (3.28 m)	10'9" (3.28 m)
Bucket rollback at groundline.	40°	40°	40°	46°	46°
Breakout force — Combined.	7600 lbf (33 805 N)	7600 lbf (33 805 N)	7600 lbf (33 805 N)	7040 lbf (31 314 N)	7040 lbf (31 314 N)
Dump angle at full height.	45°	45°	45°	52°	52°
Grading angle.	110°	110°	110°	103°	103°
Digging depth below ground line — bucket flat.	3.25" (83 mm)	3.25" (83 mm)	5.2" (132 mm)	5.25" (133 mm)	4.4" (112 mm)
Digging depth — using clam.	NA	NA	NA	47" (1.19 m)	46" (1.17 m)
Digging depth — clam open.	NA	NA	NA	5" (127 mm)	4" (102 mm)
Dump clearance at full height 45° dump.	8'7" (2.62 m)	8'4" (2.54 m)	8'2" (2.49 m)	NA	NA
52° — clam.	NA	NA	NA	10' (3.05 m)	9'11.5" (3.03 m)
52° — bucket.	NA	NA	NA	8'7" (2.62 m)	8'5" (2.57 m)
Dump reach at full height 45° dump.	25.5" (648 mm)	28" (711 mm)	25.2" (640 mm)		
52° dump.				27" (686 mm)	25" (635 mm)
Reach — bucket on ground.	5'11" (1.80 m)	6'5" (1.96 m)	6'5" (1.96 m)	6'5" (1.96 m)	6'2" (1.88 m)
Width of cutting edge.	74" (1.88 m)	82" (2.08 m)	82" (2.08 m)	82" (2.08 m)	82" (2.08 m)
Maximum clam opening.	NA	NA	NA	37" (940 mm)	37" (940 mm)
Moldboard height.	NA	NA	NA	36" (914 mm)	36" (914 mm)
Raising time to full height.	5.2 sec.	5.2 sec.	5.2 sec.	5.2 sec.	5.2 sec.
Bucket dumping time.	1.0 sec.	1.0 sec.	1.0 sec.	1.0 sec.	1.0 sec.
Lowering time — power down.	3.0 sec.	3.0 sec.	3.0 sec.	3.0 sec.	3.0 sec.

580 SUPER E BACKHOE

HYDRAULIC SYSTEM

Hydraulic pump: Front mounted, positive displacement, gear type, tandem pump.

Pump capacity:

30 gpm @ 2200 rpm @ 2000 psi
(114 l/min @ 2200 r/min @ 13 790 kPa)

Control valve main relief pressure: 2450 psi (16 892 kPa)

Filtration: 10 micron, full flow replaceable cartridge on return line. Condition indicator light for filter.

Backhoe control valve: Sectional four spool valve — boom, dipper, bucket, and swing. Foot or optional hand swing. Regeneration and hydraulic cushioned swing stops. Mono-cast two spool stabilizer valve with pilot checks.

Hydraulic lines: Steel tubing with brazed or flared fittings and wire braid high pressure hose with crimped, full flow fittings.

Backhoe cylinders:

Stabilizers (2)... 4" dia x 21.77" stroke,
2" rod (102 mm dia x 553 mm stroke,
51 mm rod)

Swing (2)... 4" dia x 11.2" stroke,
2" rod (102 mm dia x 285 mm stroke,
51 mm rod)

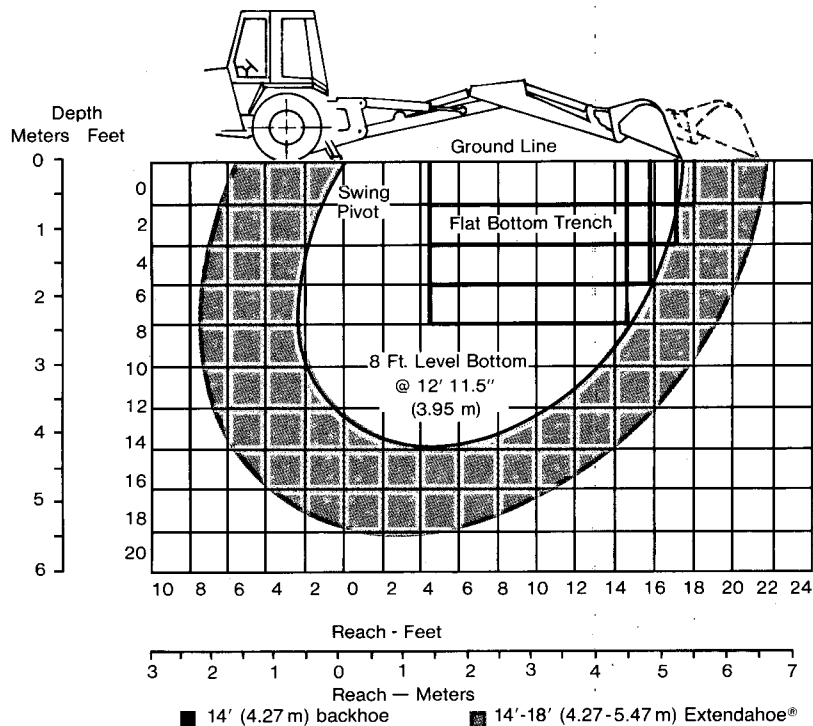
Boom (2)... 3.2" dia x 42.1" stroke,
1.75" rod (83 mm dia x 1.07 m stroke,
44 mm rod)

Dipper (1)... 4" dia x 33.87" stroke,
2" rod (102 mm dia x 860 mm stroke,
51 mm rod)

Bucket (1)... 3.5" dia x 30.56" stroke,
2.5" rod (89 mm dia x 776 mm stroke,
64 mm rod)

Dipper extension (1)... 3" dia x 48" stroke,
1.5" rod (76 mm dia x 1.22 m stroke,
38 mm rod)

DIG DEPTH CHART



OPERATIONAL DATA

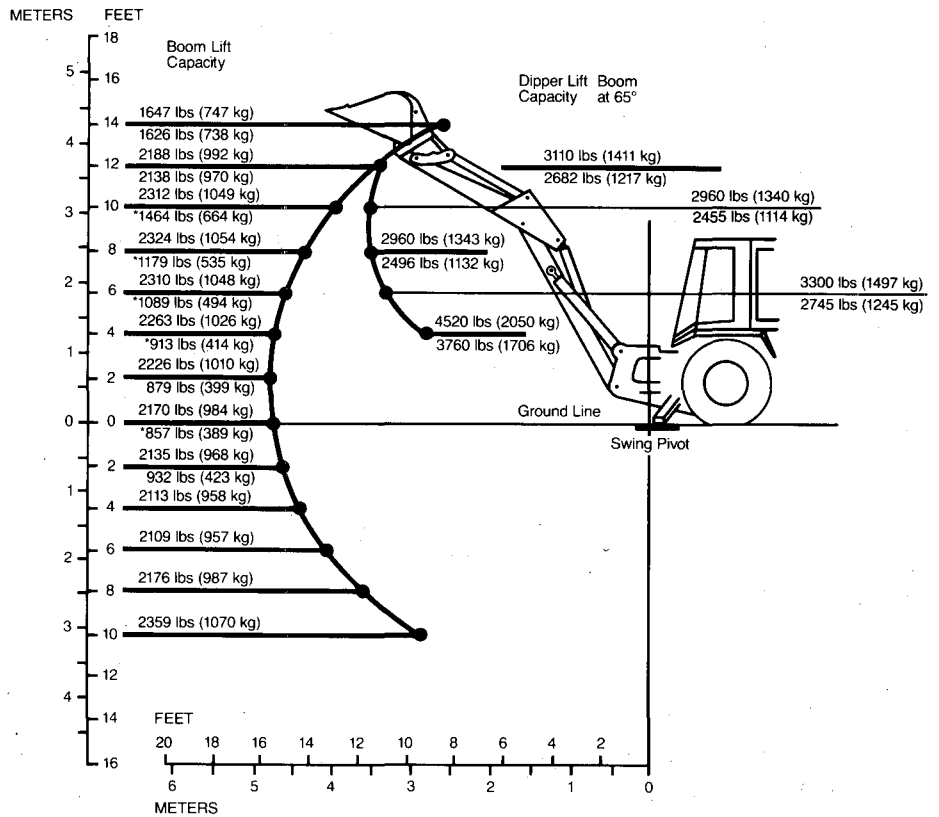
	14' (4.27 m) Backhoe		14'-18' (4.27 m-5.49 m) Extendahoe®	
	RETRACTED	EXTENDED	RETRACTED	EXTENDED
Digging depth — SAE.....	14'2" (4.32 m)	14'4" (4.37 m)	14'4" (4.37 m)	18'3" (5.56 m)
with 24" (610 mm) high capacity bucket.....	14'7" (4.45 m)	14'9" (4.50 m)	14'9" (4.50 m)	18'8" (5.69 m)
Overall reach from rear axle centerline.....	21'2" (6.45 m)	21'2" (6.45 m)	21'2" (6.45 m)	25' (7.62 m)
Overall reach from swing pivot.....	17'8" (5.38 m)	17'9" (5.41 m)	17'9" (5.41 m)	21'7" (6.58 m)
Loading height.....	11'2" (3.40 m)	11'11" (3.63 m)	11'11" (3.63 m)	14'3" (4.34 m)
Loading reach.....	6'7" (2.01 m)	5'9" (1.75 m)	5'9" (1.75 m)	9' (2.74 m)
Swing arc.....	180°	180°	180°	180°
Bucket rotation — #1 position.....	168°	168°	168°	168°
#2 position.....	151°	147°	151°	147°
Stabilizer spread — operating position.....	9' (2.74 m)	9' (2.74 m)	9' (2.74 m)	9' (2.74 m)
Stabilizer spread — transport position.....	6'9" (2.06 m)	6'9" (2.06 m)	6'9" (2.06 m)	6'9" (2.06 m)
Stabilizer angle — from straight.....	20°	20°	20°	20°
Digging force, bucket cylinder, SAE.....	11,535 lbf (51 309 N)	11,586 lbf (51 536 N)	11,586 lbf (51 536 N)	11,586 lbf (51 536 N)
Digging force, dipper cylinder, SAE.....	6015 lbf (26 755 N)	5835 lbf (25 954 N)	5835 lbf (25 954 N)	4082 lbf (18 154 N)
Leveling angle (maximum slope on which backhoe will make vertical cut).....	12°	12°	12°	12°

580 SUPER E BACKHOE

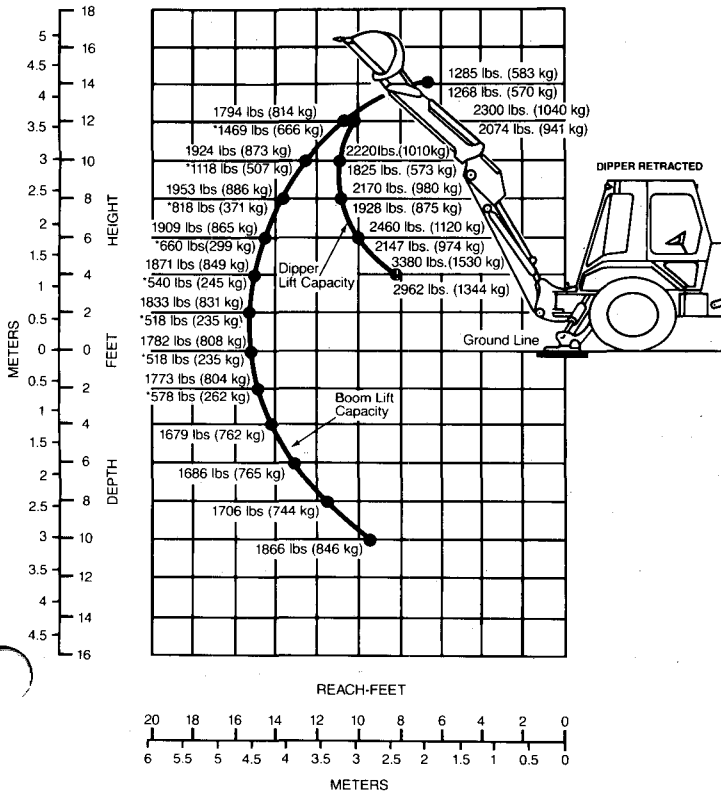
LIFT CAPACITY CHARTS —

- Lift capacity figures on this chart of 87% of the maximum lift force per SAE Definition J31 and J49 at 2450 psi (16 892 kPa) system relief pressure.
- Top numbers/lift capacity within 45° either side of prime mover.
- Bottom number/lift capacity anywhere within full swing arc.
- *Figures are stability limited and 75% of tipping load.
- Figures stated are determined by static tests and do not include dynamic factors.
- Machine equipped with 24" (610 mm) trenching bucket.
- Boom is angled at 65°.

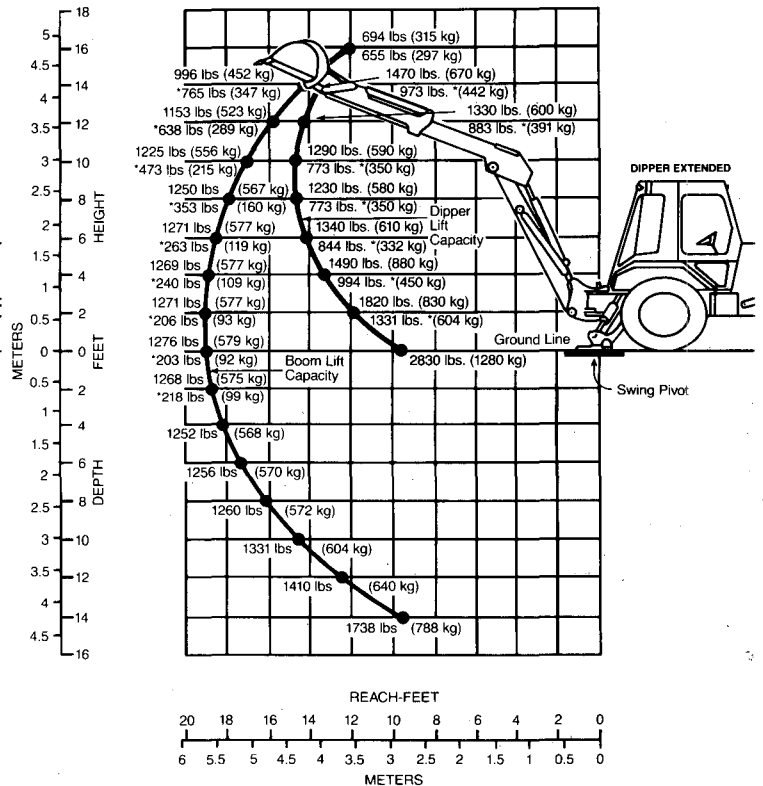
14' (4.27 m) BACKHOE LIFT CAPACITY



EXTENDAOE LIFT CAPACITY (DIPPER RETRACTED)

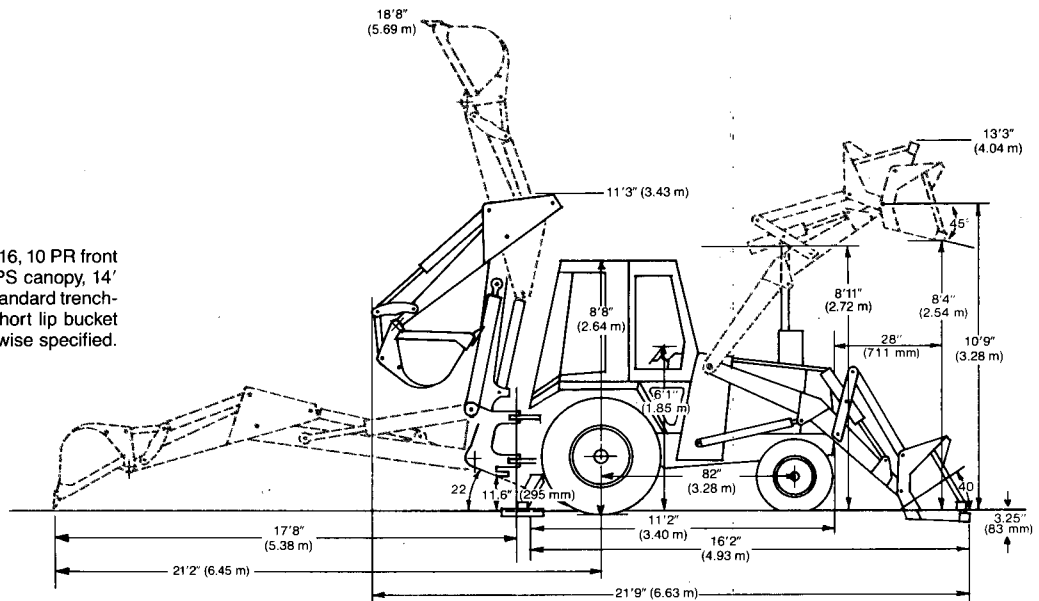


EXTENDAOE LIFT CAPACITY (DIPPER EXTENDED)



DIMENSIONAL DATA

NOTE: Specifications taken with 11L x 16, 10 PR front tires, 17.5L x 24, 8 PR rear tires, ROPS canopy, 14' (4.27 m) backhoe with 24" (610 mm) standard trenching bucket, loader with 74" (1.88 m) short lip bucket and standard equipment unless otherwise specified.



TRACTOR

Overall length	11'2" (3.40 m)
Overall width	78" to 81" (1.96 to 2.06 m)
Height: to top of canopy	8'7" (2.62 m)
Height: to top of cab	8'8" (2.64 m)
Height: to top of exhaust stack	8'11" (2.72 m)
Height: to top of steering wheel	6'1" (1.85 m)
Ground clearance (tractor main frame)	9.13" (232 mm)
Front wheel tread (2-WD)	59" or 62" (1.5 or 1.6 m)
(4-WD)	67" (1.7 m)
Rear wheel tread	62" (1.57 m)
Wheel base (2-WD)	82" (2.08 m)
(4-WD)	84" (2.13 m)

TRACTOR/LOADER/BACKHOE

	EXTENDAHOE®	
	14' (4.27 m)	Retracted Extended
Overall length — transport		
Short lip bucket	21'9" (6.63 m)	22'2" (6.76 m) N/A
Long lip bucket	22'2" (6.76 m)	22'7" (6.88 m) N/A
4-in-1 bucket	21'9" (6.63 m)	22'5" (6.83 m) N/A
Overall reach from rear		
axle centerline	21'2" (6.45 m)	21'2" (6.45 m) 25' (7.62 m)
Swing pivot	17'8" (5.38 m)	17'9" (5.41 m) 21'7" (6.58 m)
Overall height		
maximum	18'8" (5.69 m)	18'8" (5.69 m) 22'3" (6.78 m)
Transport height	11'3" (3.43 m)	11'6" (3.45 m) N/A
Overall width — transport	81" (2.06 m)	81" (2.06 m) 81" (2.06 m)
Ground clearance at backhoe main frame	11.6" (295 mm)	11.3" (287 mm) 11.3" (287 mm)
Angle of departure	22°	21° 21°

TRACTOR/LOADER

	General Purpose Bucket			4-in-1® BUCKET	
	(2-WD) SHORT LIP	(2-WD) LONG LIP	(4-WD) LONG LIP	(2-WD)	(4-WD)
Overall length	15'9" (4.80 m)	16'2" (4.93 m)	16'2" (4.93 m)	16' (4.88 m)	16' (4.88 m)
Overall width	74" (1.88 m)	82" (2.08 m)	82" (2.08 m)	82" (2.08 m)	82" (2.08 m)
Overall operating height	13'3" (4.04 m)	13'3" (4.04 m)	13'1" (3.99 m)	15'0.5" (4.56 m)	15'0.5" (4.56 m)
Digging depth below ground — bucket flat	3.25" (83 mm)	3.25" (83 mm)	5.2" (132 mm)	5.25" (133 mm)	4.4" (112 mm)
Height to bucket hinge pin	10'9" (3.28 m)	10'9" (3.28 m)	10'9" (3.28 m)	10'9" (3.28 m)	10'9" (3.28 m)
Dump angle at full height	45°	45°	45°	52°	52°
Dump clearance at full height					
45° dump	8'7" (2.62 m)	8'4" (2.54 m)	8'2" (2.49 m)	10' (3.05 m)-clam. 8'7" (2.62 m)-bucket	9'11.5" (3.03 m)-clam. 8'5" (2.57 m)-bucket
Dump reach at full height					
45° dump	25.5" (648 mm)	28" (711 mm)	25.2" (640 mm)	27" (656 mm)	25" (635 mm)
Bucket rollback at ground line	37°	37°	39°	46°	46°

EQUIPMENT DATA

STANDARD EQUIPMENT TRACTOR

Air cleaner, dry type with replaceable cartridges • Anti-freeze solution to -20°F (-29°C) • Axle (front), heavy-duty fixed tread • Brakes, hydraulic • Brake, parking, over-center • Electrical system, 12 volt • Engine, 63 net h.p. (47 kW) Case 4-390 diesel • Fenders, rear • Floor plates • Fuel opening, lockable • Gauges and Instruments: air cleaner restriction light, alternator charge warning lamp, condition light for loader and backhoe hydraulic system filter, converter temperature gauge, engine oil pressure warning light, engine water temperature gauge, fuel level gauge, hourmeter, tachometer, voltmeter • Grille, heavy-duty • Headlights, two shock mounted, quartz halogen • Muffler, upright oval with deflector • Oil cooler, hydraulic • Oil filter, full flow • Power shuttle, with torque converter, 4-speed transaxle with differential lock • Radiator opening, lockable • Rear lights, one quartz work and one red tail • Reservoir, common for steering, loader and backhoe • ROPS canopy on isolated operator's compartment • Safety belt, seat mounted • Seat, Easy Ride with single lever turn-around adjustment • Side panels, full length of engine, lockable • Steering, hydrostatic • Throttle, hand and foot • Tires (front) 7.50 x 16, 10PR, I1 • Tires (rear) 14.9 x 24, 6PR, R4 utility traction tread • Toolbox • Wrapper, front.

LOADER

All tractor standard equipment • Single lever control • Hydraulic system, complete • Indicator, bucket level • Loader (less bucket) • Return-to-dig • Self-leveling • Support strut, lift arm.

14' (4.27 m) BACKHOE

All tractor and loader standard equipment • Hydraulic system, complete, including three lever, footswing control • Over-center backhoe (less bucket) Model 35C with quick disconnect mounting • Stabilizers with two position cleated pads.

14'-18' (4.27 m-5.49 m) EXTENDAHOE

All tractor, loader and backhoe equipment • Hydraulic telescoping Extendahoe accessory hydraulics and front counterweight.

OPTIONAL EQUIPMENT TRACTOR

Air conditioning • Alarm, backup • Anti-freeze to -40°F (-40°C) • Beacon rotating • Drawbar, swinging or rigid • Emblem, SMV • Floor mat • Full lockup package • Hitch, modular 3-point • Interior package, deluxe adjustable suspension seat, floor mats, fender and post covers • Horn • Lights, combination tail, stop, directional and flasher, two quartz work (canopy only) • Muffler, spark arresting • Paint, special • ROPS cab with air filtration, defogger, heater and pressurization • Front & rear wipers, front & rear work lights, combination tail, stop, directional and flashers • Seat, suspension • Start kit, cold weather • Dual batteries, either or both • Tires, various sizes - see tractor section • Weights, front end • Normalizing Turbo charged engine • 4-wheel drive.

LOADER

All tractor optional equipment • Accessory hydraulics • Bucket teeth • Rear counterweight • 82" (2.08 m) long lip bucket, 74" (1.88 m) short lip bucket • .82" (2.08 m) 4-in-1® bucket.

BACKHOE

All tractor and loader optional equipment • Backhoe floor mat • Boom lockout • Counterweight, front • Dual lever backhoe controls • Street-cemetery stabilizer pads • 12" (305 mm), 18" (457 mm), 24" (610 mm), 30" (714 mm) standard duty trenching buckets • 18" (475 mm), 24" (610 mm), 30" (762 mm), 36" (914 mm) heavy-duty trenching buckets • 24" (610 mm) Hi-capacity bucket • Case coupler.

APPROXIMATE SHIPPING WEIGHTS

NOTE: Specifications taken with 11L x 16 front tires, 17.5L x 24 rear tires. ROPS canopy and standard equipment unless otherwise specified.

TRACTOR/LOADER (Less Bucket)

Without rear counterweight 7580 lbs (3438 kg)

Rear counterweight (required with no rear attachments) add 1495 lbs (678 kg)

Cab add 320 lbs (145 kg)

Air conditioning add 30 lbs (13.6 kg)

4-wheel drive add 620 lbs (281 kg)

TRACTOR/LOADER/BACKHOE (Less Buckets)

14' (4.27 m) backhoe 10,660 lbs (4835 kg)

Extendahoe® 12,060 (5470 kg)

Front counterweight (required w/Extendahoe)

2-wheel drive add 800 lbs (363 kg)

4-wheel drive add 700 lbs (318 kg)

LOADER BUCKETS (Optional)

74" (1.88 m) short lip 600 lbs (272 kg)

82" (2.08 m) long lip 760 lbs (325 kg)

82" (2.08 m) 4-in-1® 1130 lbs (513 kg)

BACKHOE BUCKETS (Optional)

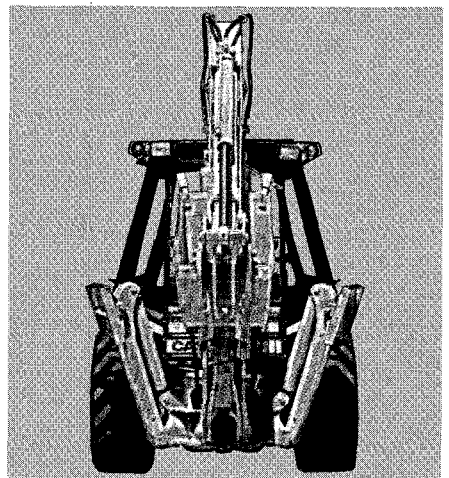
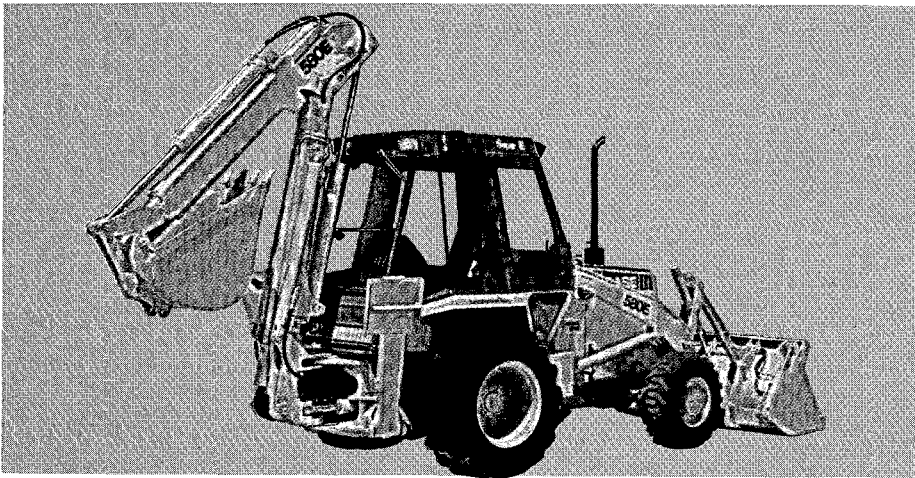
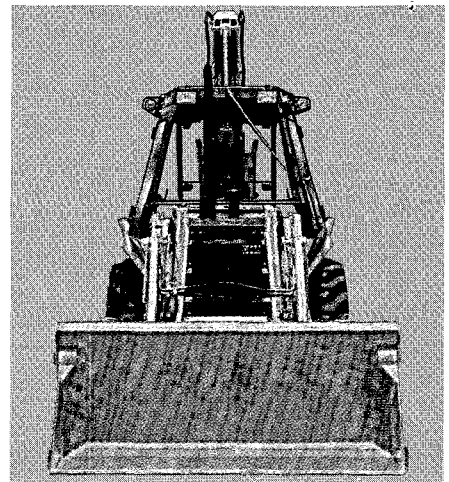
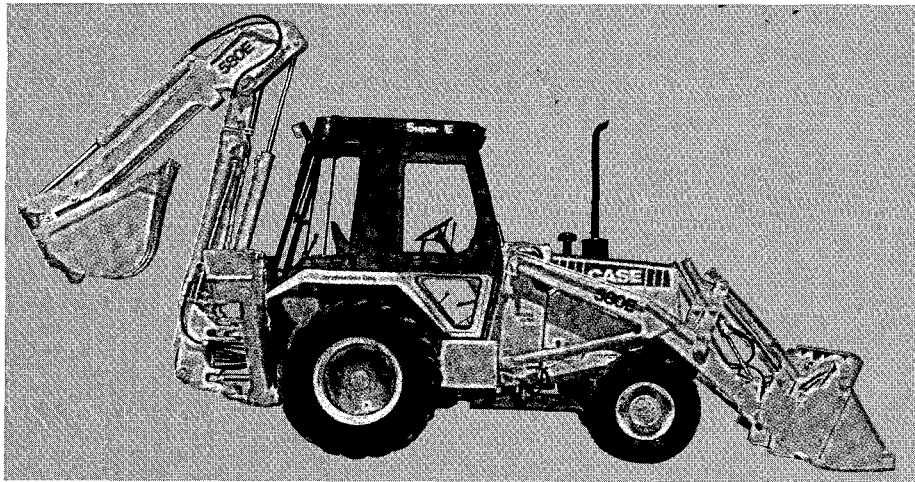
	Standard Trenching	Heavy-Duty Trenching
12" (305 mm)	198 lbs (90 kg)	N/A
18" (457 mm)	238 lbs (108 kg)	322 lbs (146 kg)
24" (610 mm)	270 lbs (122 kg)	380 lbs (172 kg)
30" (762 mm)	306 lbs (139 kg)	410 lbs (186 kg)
36" (914 mm)	346 lbs (157 kg)	458 lbs (208 kg)
24" (610 mm)	405 lbs (184 kg)	(special high capacity trenching bucket)

MOD HITCH

3 point hitch 700 lbs (321 kg)

Extendahoe, 4-in-1 and Construction King are trademarks of the J I Case Company.

580 SUPER E LOADER/BACKHOE



Sold and serviced by:

NOTE: All specifications are stated in accordance with ICED definitions or SAE standards or recommended practices, where applicable.

IMPORTANT

J I Case Company reserves the right to change these specifications without notice and without incurring any obligation relating to such change. Unit illustrated is equipped with non-standard items.

J I Case

A Tenneco Company

700 State Street Racine, WI 53404 U.S.A.

Building On Quality™





Mustang

TRACTOR & EQUIPMENT CO.

HOUSTON, TEXAS 77040 12800 Northwest Freeway (713) 460-2000

**CATERPILLAR
DEALER**BEAUMONT, TEXAS 77706
7990 Eastex Freeway
(713) 892-8412EL CAMPO, TEXAS 77437
Highway 71 (North)
(713) 543-3389LUFKIN, TEXAS 75901
Highway 69 (S. E.)
(713) 639-5551BRYAN, TEXAS 77801
3605 S. College St.
(713) 846-7761VOL **012** PAGE **498**

QUOTATION

TO
Tyler County Pct. 4
Woodville, Texas 75979

Attn: James Jordan

QUOTATION NO. S86-272

DATE August 7, 1986

CUSTOMER INQUIRY NO.

**IMPORTANT: WHEN ORDERING, PLEASE MENTION
ABOVE QUOTATION NUMBER AND DATE.**

QUAN.	DESCRIPTION	UNIT PRICE	EXTENSION
	We are pleased to submit the following for your consideration: New Caterpillar 416 backhoe loader. Includes diesel engine with 3.1 KW starter, 12-volt electrical system with 52 ampere alternator, 14'0" center pivot backhoe with 2-lever control, self-leveling loader with single lever control, transmission neutralizer switch, bucket level indicator, lift cylinder brace and return-to-dig (automatic bucket positioner), dry-type air cleaner with precleaner, antifreeze solution (to -20 degrees fahrenheit), multiplate wet disc brakes, ROPS canopy with seat belt, differential lock, ether cold start aid, rear fenders, horn, impact-absorbing front grill, gauges for engine coolant temperature, torque converter oil temperature, fuel level and hydraulic oil level, electric hourmeter, voltmeter, warning light and audible alarm for engine oil pressure and coolant, tachometer, head lights, rear flood lights, interior rearview mirror, parking brake, hydrostatic power steering, adjustable bucket seat, hand and foot throttle, 11L x 16 10 PR front tires, 16.9 x 24 8 PR rear tires, tool box, four-speed power shuttle transmission with torque converter, vandalism protection, 24" backhoe bucket, and arm rests.		
	Price		\$29,574.00
	Price after trade-in of your 1972 Ford S/N C354552		28,574.00
	OPTIONS: You may lease purchase this unit for 60 months for \$589.00 per month. Lease purchase for 60 month after trade-in will be \$569.00 per month.		
	Warranty: Plus 3 Delivery: Immediate		
	APPLICABLE WARRANTY(S): Plus 3	PRICES ARE F.O.B.:	Tyler County, Texas

THIS QUOTATION SHALL TERMINATE UNLESS MUSTANG RECEIVES WRITTEN ACCEPTANCE WITHIN 30 DAYS HEREOF.

ACCEPTED THIS DAY OF _____, 19____

By _____
(If signing for a corporation or partnership, include name of customer and title of person signing.)

MUSTANG TRACTOR & EQUIPMENT COMPANY

By Jim Lindsay Area Manager
(TITLE)

THIS QUOTATION IS SUBJECT TO THE TERMS AND CONDITIONS CONTAINED ON THE REVERSE SIDE HEREOF, SAME BEING INCORPORATED HEREIN BY REFERENCE.



Mustang

TRACTOR & EQUIPMENT CO.

P.O. BOX 1703 • LUFKIN, TEXAS 75901



First Class Mail

VOL 012 PAGE 497

Tyler County Pct. 4
Woodville, Texas 75979

Backhoe Loader Bid

8:30A

AUG 11 1985

BRUCE BOSTICK, COUNTY CLERK
TYLER COUNTY, TEXAS

John Brown



Mustang

TRACTOR & EQUIPMENT CO.

HOUSTON, TEXAS 77040 12800 Northwest Freeway (713) 460-2000

BEAUMONT, TEXAS 77706
7990 Eastex Freeway
(713) 892-8412EL CAMPO, TEXAS 77437
Highway 71 (North)
(713) 543-3389LUFKIN, TEXAS 75901
Highway 69 (S.E.)
(713) 639-5551BRYAN, TEXAS 77801
3605 S. College St.
(713) 846-7761VOL **012** PAGE **498**

QUOTATION

TO
Tyler County Pct. 4
Woodville, Texas 75979

Attn: James Jordan

QUOTATION NO. S86-272

DATE August 7, 1986

CUSTOMER INQUIRY NO.

IMPORTANT: WHEN ORDERING, PLEASE MENTION ABOVE QUOTATION NUMBER AND DATE.

QUAN.	DESCRIPTION	UNIT PRICE	EXTENSION
	We are pleased to submit the following for your consideration:		
1	New Caterpillar 416 backhoe loader. Includes diesel engine with 3.1 KW starter, 12-volt electrical system with 52 ampere alternator, 14'0" center pivot backhoe with 2-lever control, self-leveling loader with single-lever control, transmission neutralizer switch, bucket level indicator, lift cylinder brace and return-to-dig (automatic bucket positioner), dry-type air cleaner with precleaner, antifreeze solution (to -20 degrees fahrenheit), multiplate wet disc brakes, ROPS canopy with seat belt, differential lock, ether cold start aid, rear fenders, horn, impact-absorbing front grill, gauges for engine coolant temperature, torque converter oil temperature, fuel level and hydraulic oil level, electric hourmeter, voltmeter, warning light and audible alarm for engine oil pressure and coolant, tachometer, head lights, rear flood lights, interior rearview mirror, parking brake, hydrostatic power steering, adjustable bucket seat, hand and foot throttle, 11L x 16 10 PR front tires, 16.9 x 24 8 PR rear tires, tool box, four-speed power shuttle transmission with torque converter, vandalism protection, 24" backhoe bucket, and arm rests.		
	Price		\$29,574.00
	Price after trade-in of your 1972 Ford S/N C354552		28,574.00
	OPTIONS: You may lease purchase this unit for 60 months for \$589.00 per month. Lease purchase for 60 month after trade-in will be \$569.00 per month.		
	Warranty: Plus 3 Delivery: Immediate		
	APPLICABLE WARRANTY(S): Plus 3	PRICES ARE F.O.B.:	Tyler County, Texas

THIS QUOTATION SHALL TERMINATE UNLESS MUSTANG RECEIVES WRITTEN ACCEPTANCE WITHIN 30 DAYS HEREOF.

ACCEPTED THIS DAY OF _____, 19____

By _____
(If signing for a corporation or partnership, include name of customer and title of person signing.)

MUSTANG TRACTOR & EQUIPMENT COMPANY

By Jim Lindsay Area Manager
(TITLE)

THIS QUOTATION IS SUBJECT TO THE TERMS AND CONDITIONS CONTAINED ON THE REVERSE SIDE HEREOF, SAME BEING INCORPORATED HEREIN BY REFERENCE.

1. Price, Terms of Payment. All prices are exclusive of sales and any other applicable taxes. Unless terms acceptable to Mustang Tractor & Equipment Company ("Mustang") are agreed to in advance, all prices are payable in full prior to delivery. Orders are placed at manufacturer's current list price. In the event of price changes by manufacturer, the price prevailing at time of delivery will be paid by purchaser.

2. Product Warranty, Disclaimer and Limitation. The only warranties, if any, applicable to any item of machinery, equipment or other personal property subject hereto are identified on the reverse side hereof.

2.1. New Products. Mustang will not make any warranties, express or implied, regarding any new item of machinery, equipment or other personal property subject hereto, and Mustang **DISCLAIMS ALL WARRANTIES, EXPRESS OR IMPLIED, INCLUDING, BUT NOT LIMITED TO, ALL IMPLIED WARRANTIES OF MERCHANTABILITY AND OF FITNESS FOR A PARTICULAR PURPOSE** with respect to each such item. Customer's sole and exclusive remedy, if any, for defects in materials or workmanship with respect to any new item of machinery, equipment or other personal property subject hereto shall be against the manufacturer or manufacturers thereof pursuant to the express, written warranty, if any, extended by such manufacturer or manufacturers with respect to such products and described on the reverse side hereof. If any such express, written warranty is applicable, a copy thereof will be furnished upon request.

2.2. Used Products. Mustang will not make any warranties, express or implied, regarding any used item of machinery, equipment or other personal property and Mustang has expressly **DISCLAIMED ALL WARRANTIES, EXPRESS OR IMPLIED, INCLUDING, BUT NOT LIMITED TO, ALL IMPLIED WARRANTIES OF MERCHANTABILITY AND OF FITNESS FOR A PARTICULAR PURPOSE** regarding any such used item except for the express warranties specifically described on the reverse side hereof, if any. An explanation of each warranty offered by Mustang is set forth below. **ONLY THE WARRANTY DESCRIBED ON THE REVERSE SIDE HEREOF WILL BE APPLICABLE TO THE SALE BY MUSTANG OF THE PRODUCTS DESCRIBED HEREIN.**

A. BONDED BUY — If the applicable warranty is "Bonded Buy", the product described on the reverse side hereof will be warranted against defective material or workmanship for a period of 60 days from purchase date. No charge will be made for parts or labor if the defect occurs and Mustang is notified in writing during the 60 day period from purchase date.

B. PREMIUM BUY — If the applicable warranty is "Premium Buy", the product described on the reverse side hereof will be warranted against defective material or workmanship for a period of 30 days from purchase date. No charge will be made for parts or labor if the defect occurs and Mustang is notified in writing during the 30 day period from purchase date.

C. CERTIFIED BUY — If the applicable warranty is "Certified Buy", the product described on the reverse side hereof will be warranted against defective material or workmanship for a period of 30 days from purchase date. If defects do exist Mustang will pay **ONE-HALF** of cost for parts and labor if Mustang is notified in writing during the 30 day period from purchase date.

D. BUY AND TRY — If the applicable warranty is "Buy and Try" and the product does not meet purchaser's satisfaction, it may be returned within three days of purchase for a full refund. **THERE ARE NO OTHER IMPLIED OR EXPRESS WARRANTIES.**

E. "AS IS" — If the applicable warranty is "As Is", no **IMPLIED OR EXPRESS WARRANTIES** of any kind whatsoever will be applicable to product purchased.

The parties agree that the Customer's **SOLE AND EXCLUSIVE REMEDY** against Mustang under **BONDED, PREMIUM or CERTIFIED BUYS** will be for the repair or replacement of defective parts as provided in the warranty or condition selected. Repair or Replacement shall be at Mustang's discretion and **AT MUSTANG'S REGULAR PLACE OF BUSINESS, during normal business hours.** Customer agrees that no other remedy (including, but not limited to, claims for **INCIDENTAL, SPECIAL OR CONSEQUENTIAL DAMAGES, FOR ANY CAUSE WHATSOEVER, or INJURY TO PERSONS OR PROPERTY, OR ANY OTHER CONSEQUENTIAL, ECONOMIC OR SPECIAL INCIDENTAL LOSS**) shall be available to him.

Customer acknowledges and agrees that this quotation contains all agreements between Customer and Mustang and they are hereby accepted by Customer. Customer further agrees and acknowledges that no verbal contracts, agreements or warranties other than what is written in this quotation have been received or given, and signature on this quotation by Customer acknowledges this fact.

3. Force Majeure. This quotation, when accepted by Customer, shall become a binding contract but Mustang's obligation to deliver shall be conditioned upon and subject to strikes, walkouts, accidents, fire, delays in manufacturer transportation; acts of God, and embargoes or Governmental action or any other causes beyond the control of Mustang whether the same as or different from the matters and things hereinabove specifically enumerated, and any of such causes shall absolutely absolve Mustang from any liability to Customer, under the terms hereof. Upon acceptance, Customer, shall be obligated to pay the purchase price applicable to the products reflected on the reverse side hereof in accordance with the terms hereof and of any other documents now, heretofore or hereafter executed to evidence such obligation.

4. Security Interest. If the product(s) is not paid for in full in cash at the time of delivery, Mustang will retain and Customer hereby grants to Mustang a security interest in such product(s) within the meaning of the Uniform Commercial Code together with all and any substitutions, additions, or accessions to such product(s), and in any and all proceeds from the sale, exchange or disposal thereof to secure payment of the purchase price of such product(s). Customer, prior to or after delivery, specifically agrees to enter into and execute a financing statement, or statements, and an additional security agreement setting forth the terms and conditions of the Agreement between the parties in relation to the security interest of Mustang. Customer further appoints Mustang as its attorney-in-fact to execute any such financing statement or security agreement in the place and stead of Customer. In the event Customer fails to execute any such financing statement or security agreement upon request by Mustang, the entire balance of the purchase price shall at Mustang's option become due and payable and Mustang shall have all remedies available to it provided for and set out in the Uniform Commercial Code. Customer also agrees to execute and deliver to Mustang any notes or other evidences of indebtedness that may be required by Mustang. However, any note taken herewith shall be evidence of Customer's obligation to pay the unpaid time balance only and is not to be considered or construed to be payment for the product(s). **LATE OR DEFERRED PAYMENT SHALL BEAR INTEREST AT THE HIGHEST CONTRACT RATE PERMITTED BY LAW.**

5. Shipment. Mustang's responsibility for shipment will cease upon delivery to a transportation company and any claims for shortages, delays or damages occurring thereafter shall be made by Customer directly to the transportation company. Any claims which Customer may be entitled to make against Mustang for shortages and shipments shall be made within fifteen (15) days after receipt of shipment.

6. Enforceability, Entire Agreement. Customer agrees that this quotation, upon acceptance by Customer, shall not be countermanded by him and that when it is accepted (and until the execution and delivery of the contract or contracts and note or notes required to consummate the sale of this above specified) it will, together with any security agreement, promissory note or other evidence of indebtedness executed by Customer subsequently hereto, constitute the entire agreement between the parties relative to this transaction. Customer further agrees that Mustang is not bound by any representations or agreements made by any agent or employee of Mustang relative to this transaction unless specifically embodied herein.

7. Indemnity. Customer further agrees to indemnify and save harmless Mustang from all loss, damage, expense and penalty arising from any action on account of any injury to person or property of any character whatsoever occasioned by the operation, handling or transportation of any of the product(s) covered by this quotation and while the product(s) is in the possession or under the custody and control of Customer.

8. Place of Payment, Venue. In consideration of the sale of the product(s) by Mustang, Customer agrees to pay Mustang for such product(s) at Mustang's principal office in Houston, Harris County, Texas.

9. Attorney's Fees. In the event any action either to collect payment or enforce the terms and provisions of this quotation becomes necessary, Customer agrees to pay reasonable attorney's fees to Mustang should this matter be placed in the hands of an attorney for collection.

10. Miscellaneous. This quotation shall be interpreted and construed in accordance with the laws of the State of Texas. Invalidation of any portion of this quotation shall not affect the validity or enforceability of the remainder of the terms and conditions hereof, and the parties hereby agree that this quotation shall be construed as if such invalid provision had not been inserted.

11. Termination of Quotation. This quotation shall terminate unless Mustang receives written acceptance hereof within the period set forth on the reverse side hereof. Such written acceptance must refer to the quotation number and date of this quotation.

12. Cancellation. In the event Seller consents in writing to cancellation, Buyer shall pay Seller, at Seller's option, the following as liquidated damages:

- Invoice price of all goods which have been identified to the contract, whether such goods have been delivered to Buyer or not.
- Actual costs incurred by Seller for goods not completed which are allocable to the balance of the contract, including the cost of discharging Seller's liabilities which are so applicable and the costs of materials on hand which were acquired or produced in connection with partially finished work and materials.
- A reasonable allowance for profit in connection with goods called for under the contract, but with respect to which production has not yet begun at the time of cancellation.
- Reasonable costs incurred by Seller, including accountants' and attorneys' fees, if any, in making any termination settlement hereunder.



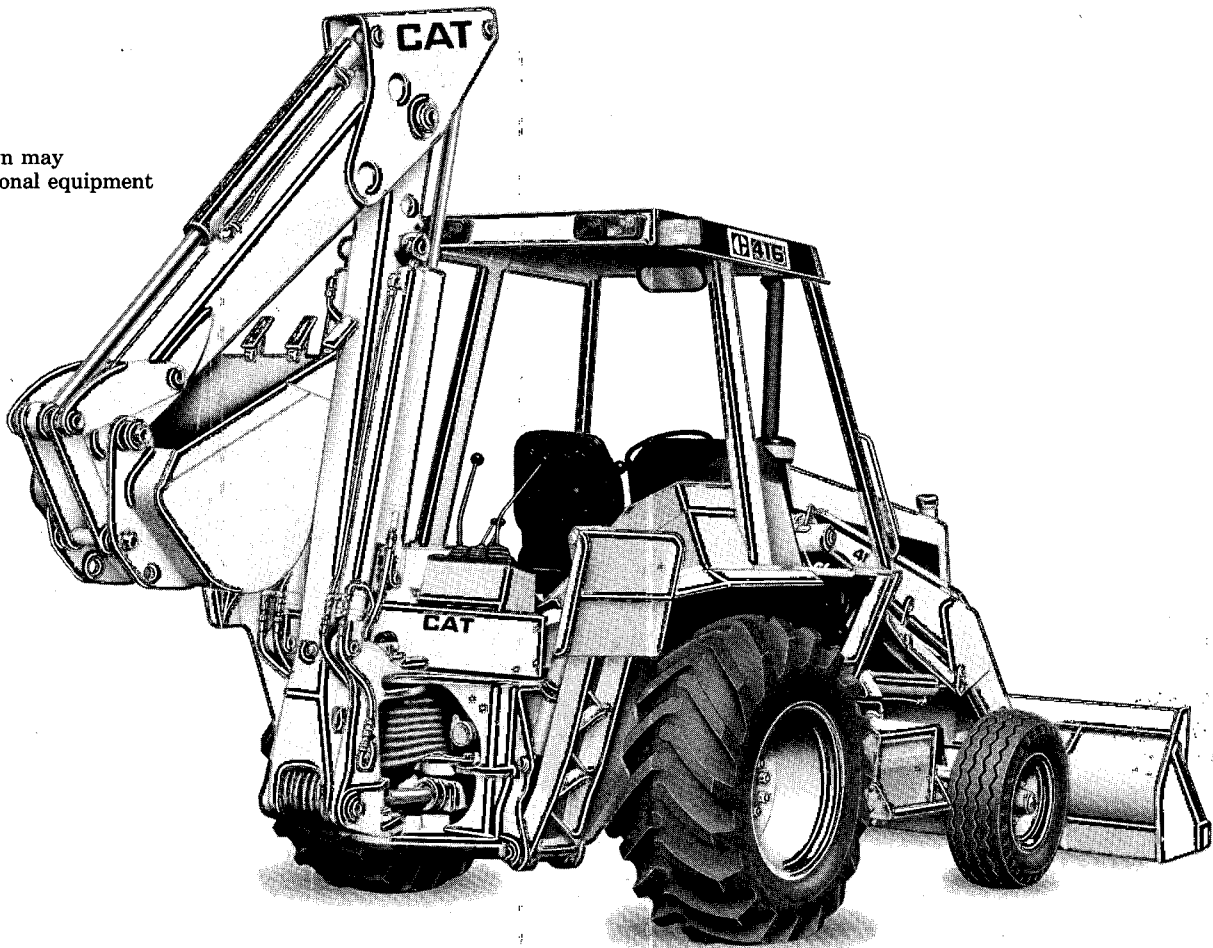
CATERPILLAR

416 Backhoe Loader

Value Analysis:

- 46 kW/62 HP net flywheel power.
- 6087 kg/13,420 lb operating weight.
- 4315 mm/14'2" maximum backhoe digging depth.
- Variable Flow, load sensing, pressure compensating hydraulic system . . . provides full hydraulic power to cutting edges at all engine speeds, low fuel consumption and low control lever efforts.
- Extensive use of XT-3 hose with O-Ring face seal connectors . . . designed to provide a dry machine.
- Overcenter Backhoe in transport position . . . provides superior roading characteristics.
- Narrow loader tower, divergent loader arms and a single tilt cylinder provides excellent forward visibility.
- Fully synchronized 4F/4R power shuttle transmission provides on-the-go shifting in all gears, two or four wheel drive.
- 195° maximum backhoe bucket rotation . . . provides superior load retention and ability to dig vertical walls at deeper depths.

Model shown may include optional equipment



engine

Flywheel power at 2400 RPM 46 kW/62 HP
(Kilowatts (kW) is the International System of Units equivalent of horsepower.)

Net power at the flywheel of the vehicle engine is based on SAE J1349 standard conditions of 25° C/77° F and 100 kPa/29.61" Hg. Power is based on using 35° API (15.6° C/60° F) gravity fuel having an LHV of 42 780 kJ/kg (18,390 Btu/lb) when used at 29.4° C/85° F and with a density of 838.9 g/L (7.001 lb/U.S. gal). Power rating is adjusted for vehicle equipped with fan, air cleaner, alternator, water pump, fuel pump, muffler and lubricating oil pump. No derating is required up to 2300 m/7500 ft altitude.

Perkins 4-stroke cycle 4.236 diesel Engine with four cylinders, 98.4 mm/3.87" bore, 127 mm/5.0" stroke and 3.86 liter/236 cu. in. displacement.

Dry type, slip fit liners — pre-finished for ease of run-in and service replacement.

Cast iron sump — resistance to impact damage.

Steel backed aluminum bearings. Heat treated crankshaft. Pressure lubrication with full-flow filtered oil. Dry-type air cleaner with primary and safety elements.

12-volt direct electric starting system with 52-amp alternator and ether starting aid standard.

Backhoe Loader



transmission

4-speed forward and reverse — full synchromesh in all gears. Constant mesh gears on all ratios permit on-the-go shifting all gears — up or down. Neutral start provision prevents starting machine in gear.

Transmission Disconnect

Hand operated power disconnect (no clutch) for on-the-go shifting and full engine RPM for fast loader lift.

Torque Converter

Single stage.

Forward/Reverse Power Shuttle

Conveniently placed, hand operated lever provides instant on-the-go direction changes from forward to reverse with power hydraulic clutches.

Travel Speeds

Travel speeds of 2-wheel-drive backhoe loader at full throttle equipped with 16.9 — 24, rear tires.

	1st		2nd		3rd		4th	
	Km/H	MPH	Km/H	MPH	Km/H	MPH	Km/H	MPH
Forward	5.3	3.3	10.0	6.2	17.9	11.1	32.2	20.0
Reverse	5.3	3.3	10.0	6.2	18.0	11.2	32.2	20.0



axles

Axle Rating 2 and 4-wheel drive (SAE J43)

Front axle rating	
Static	4180 kg/9,216 lb
Rear axle rating	
Static	6370 kg/14,043 lb

Rear Axle

Heavy duty industrial axle with inboard planetary reduction and differential lock.

Front axle with standard 2-wheel drive

Oscillation 11° each direction from centerline

Front axle with optional 4-wheel drive

Oscillation 11° each direction from centerline.

Switch on instrument panel engages 4-wheel drive, on the move, in any gear, forward or reverse.

Drive from differential to front wheels via planetary reduction in each wheel. On-the-go shifting up or down in all gears is retained in 4-wheel drive.



brakes

Two fully enclosed, self-energizing oil disc brakes on final drive input shaft. Foot operated, pedal interlock for roading, or independently for working applications. Parking brake uses service brake system.



steering

Steering unit provides emergency steering capability in case of power failure.

Type	Hydrostatic
Power steering	Hydrostatic
Cylinder	(1) double acting, bore 76 mm/3", stroke 220 mm/8.7", rod 47 mm/1.87"

Turning Radius, 2-wheel drive	3953 mm/12'11.5"
4-wheel drive	3886 mm/12'9"



tires

Type	Size	Ply Rating
Front		
Standard 2wd	11L — 16	10
Standard 4wd	10.5 — 20	8
Rear		
Standard 2wd	16.9 — 24	8
Optional 2wd	16.9 — 24	10
Optional 2wd	19.5L — 24	8
Standard 4wd	19.5L — 24	8
Optional 2 or 4wd	19.5L — 24	10



hydraulic system

Variable flow, load sensing, pressure compensating design provides efficient use of power and low-effort controls.

Type	Closed center
Pump type	Variable flow axial piston
Pump capacity	108 l/min/28.5 gpm at 2400 RPM and 2700 psi



service refill capacities

	Liters	U.S. Gallon
Cooling system	21.7	5.75
Fuel tank	83	22
Engine oil		
with filter	6.6	7 qts.
Transmission	9.5	10 qts.
Rear axle	16	17 qts.
Hydraulic reservoir	37.9	10
Hydraulic system	79.5	21
4-wheel drive front axle	7.0	1.8



weights

Backhoe loader with standard equipment: 2235 mm/88" General Purpose loader bucket, 610 mm/24" backhoe bucket, 79 kg/175 lb operator, full fuel tank, and standard 2-wheel drive tires.

Operating Weight 6087 kg/13,420 lb.	kg	lb
Cab	+231	+509
4-wheel drive	+229	+505
Extendable stick*	+260	+574
Multi-purpose bucket	+188	+415

*Includes 16.9 x 24 10PR tires.

Backhoe Dimensions

	Standard stick		Extendable stick			
			Retracted		Extended	
Digging depth — SAE (max)	4315 mm	14'2"	4415 mm	14'6"	5624 mm	18'5"
610 mm/2' flat bottom	4290 mm	14'1"	4389 mm	14'5"	5595 mm	18'4"
Overall reach from rear axle centerline at groundline	6501 mm	21'4"	6595 mm	21'7.5"	7753 mm	25'5"
Overall reach from swing pivot at groundline	5411 mm	17'9"	5505 mm	18'1"	6663 mm	21'10"
Loading height	3440 mm	11'3.5"	3430 mm	11'3"	4136 mm	13'7"
Loading reach	1917 mm	6'3"	2109 mm	6'11"	3103 mm	10'2"
Swing arc	180°		180°		180°	
Bucket rotation — #1 position for max. load retention	195°		187°		187°	
#2 position for max. power	150°		144°		144°	
Stabilizer spread — operating position	2820 mm	9'3"	2820 mm	9'3"	2820 mm	9'3"
Stabilizer spread — transport position	2052 mm	6'9"	2052 mm	6'9"	2052 mm	6'9"
Digging force, bucket cylinder, SAE	47.2 kN	10,610 lb	46.4 kN	10,440 lb	46.4 kN	10,440 lb
Digging force, dipper cylinder, SAE	28.6 kN	6345 lb	28.0 kN	6300 lb	19.6 kN	4410 lb
Leveling angle (maximum slope on which backhoe will make vertical cut)	14°		14°		14°	

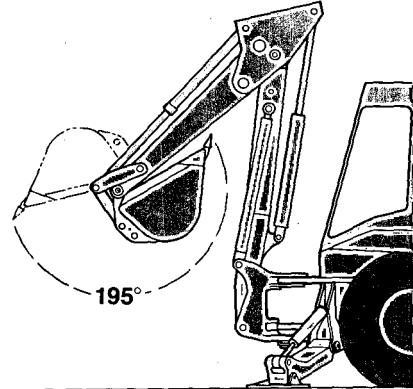
backhoe bucket Capacities (SAE)

Width	Capacities				Weight	No. of Teeth	
	Heaped		Struck				
mm	in	L	cu ft	L	cu ft	kg	lb
*305	12	80	2.8	62	2.2	84	185
†*457	18	154	5.3	119	4.2	114	251
†*610	24	214	7.4	165	5.8	130	287
*762	30	284	10.0	212	7.5	146	322
*914	36	355	12.4	258	9.1	161	355

*Heavy duty buckets available from factory
†Rock buckets available from factory.

Teeth Options

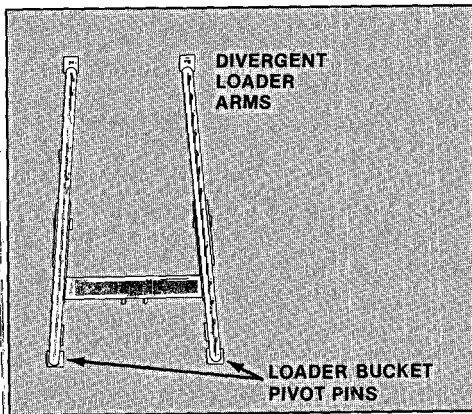
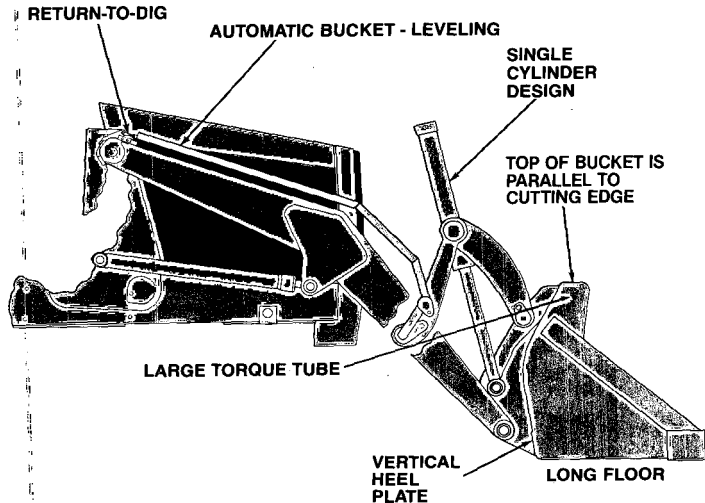
- Utility
- Penetration
- Abrasion
- Short
- Long



Loader Dimensions and Features

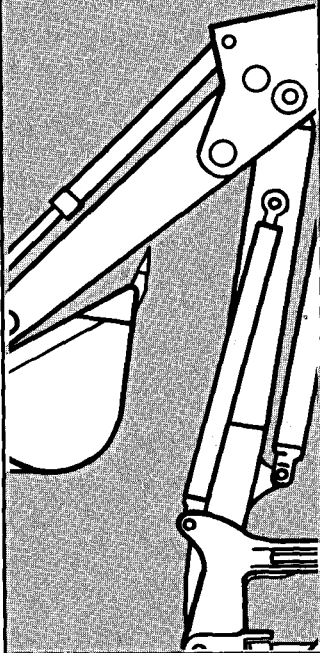
LOADER BUCKET Capacities (SAE)

Type		General Purpose	Multi-Purpose
Width	(mm/in)	2235/88"	2235/88"
Heaped	(m ³ /yd ³)	.76/1	.76/1
Struck	(m ³ /yd ³)	.63/.82	.63/.82
Lift capacity at full height	(kg/lb)	2381/5,250	2396/5,280
Breakout force	(kg/kN/lb)	3402/33.3	3781/37.0
		7500	8329
Hinge pin height	(mm/ft/in)	3300/10'10"	3300/10'10"
Dump angle full height		45°	45°
Dump height @ 45°	(mm/ft/in)	2642/8'8"	2673/8'9"
Reach @ full height/45°	(mm/in)	692/27"	629/24.8"
Maximum rollback ground		40°	40°
Digging depth	(mm/in)	101/4"	126/5"
Grading angle		113°	115°
Width of dozer cutting edge	(mm/in)	—	2262/89.1"
Clam opening — maximum	(mm/in)	—	960/37.8"
Weight	(kg/lb)	377/830	549/1210



416 Hydraulic System

Overcenter Backhoe Design



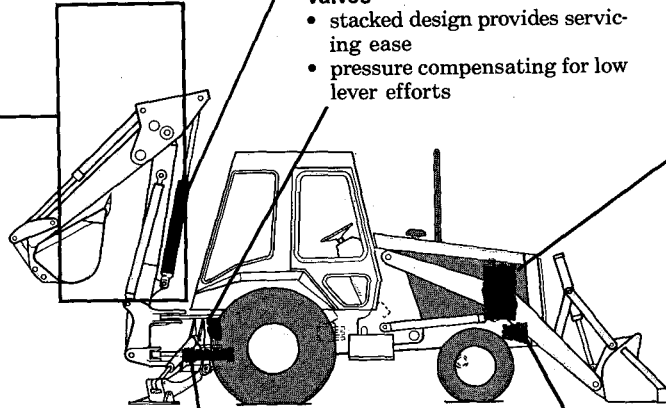
- transfers weight to the front axle for machine balance and superior roading capabilities

Hydraulic Cylinders

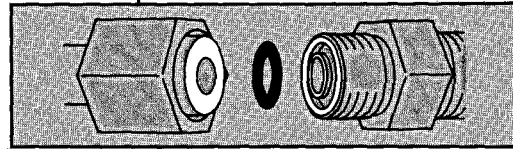
- large wear bands for rod and piston alignment

Valves

- stacked design provides servicing ease
- pressure compensating for low lever efforts



XT-3 Hose and O-Ring Face Seals

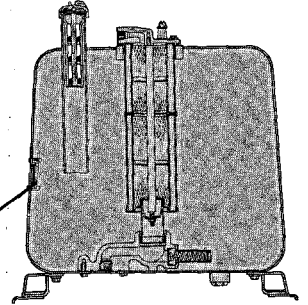


- long hose life
- dry machine

Excellent Hose Routing

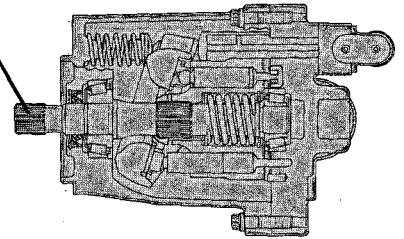
- reduces hose damage
- easy accessibility

Hydraulic Tank and Filter Assembly

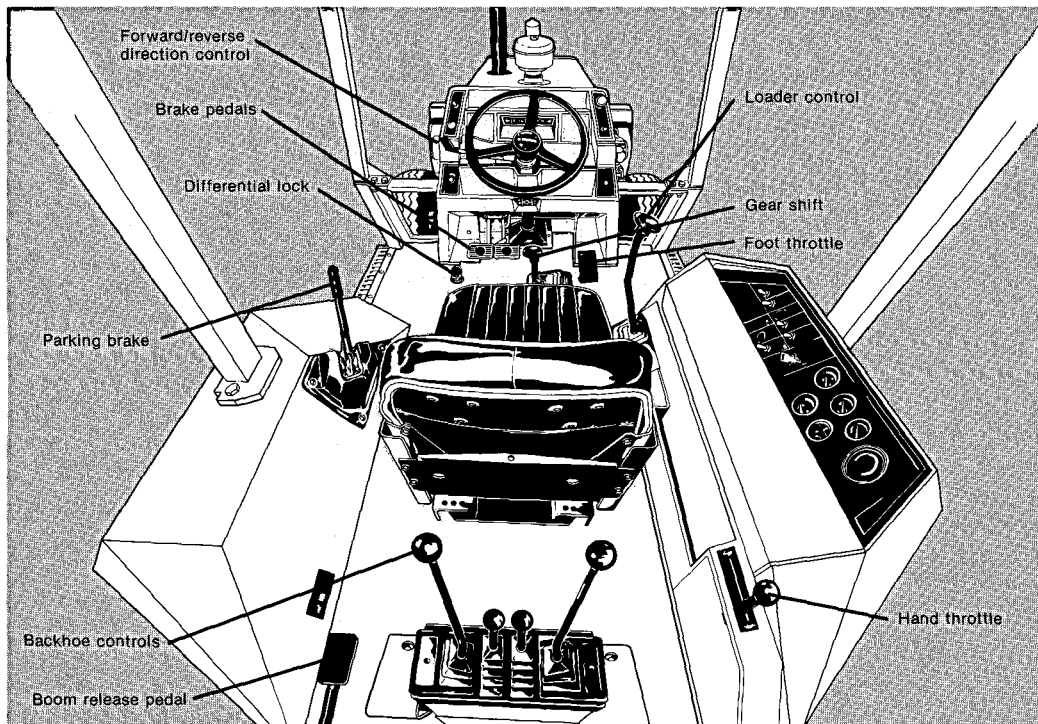


- strategically positioned for optimum weight distribution
- two stage filter has large filtration area

Variable Flow Axial Piston Pump (load sensing)



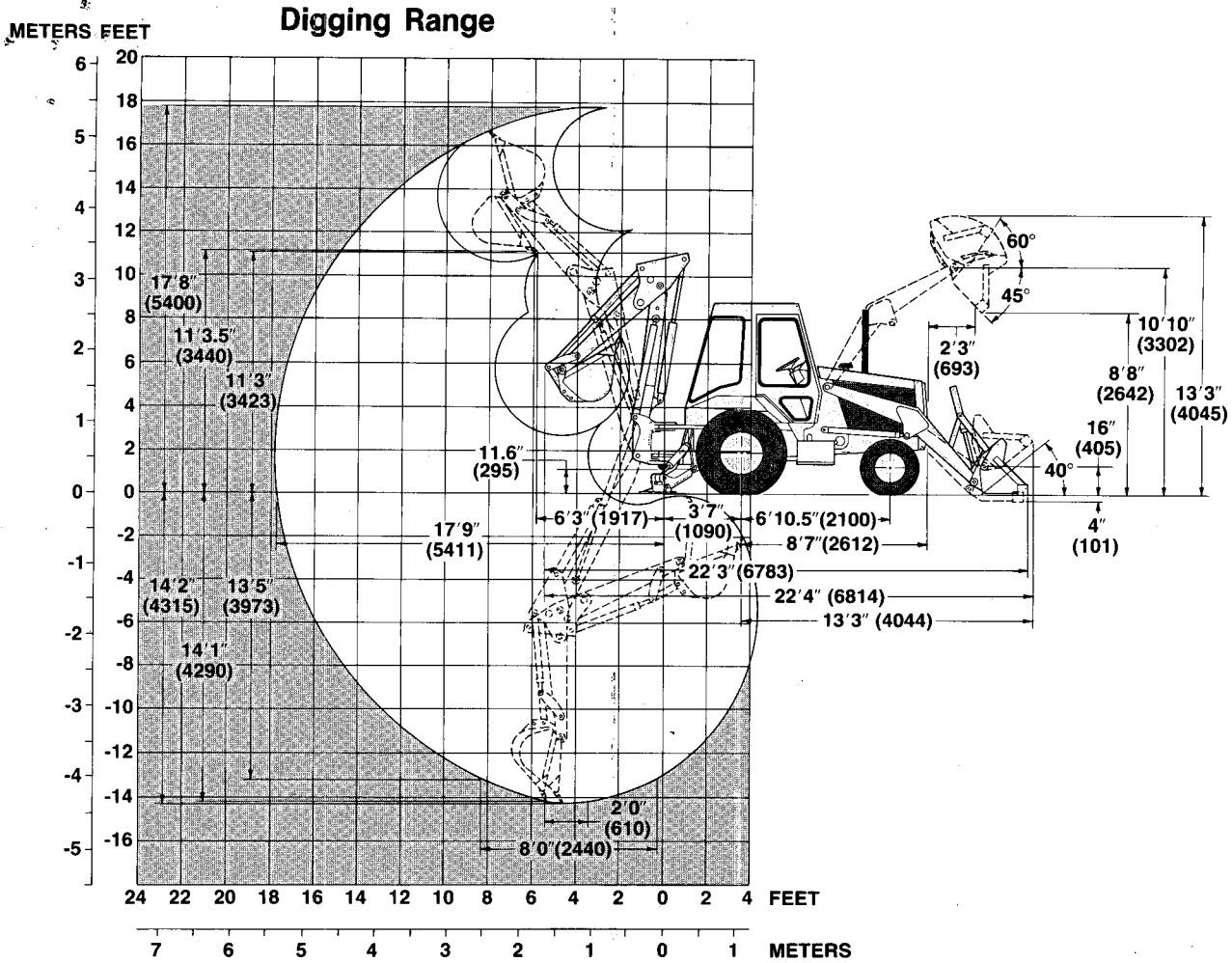
- automatically matches power to work demands
- reduces fuel consumption



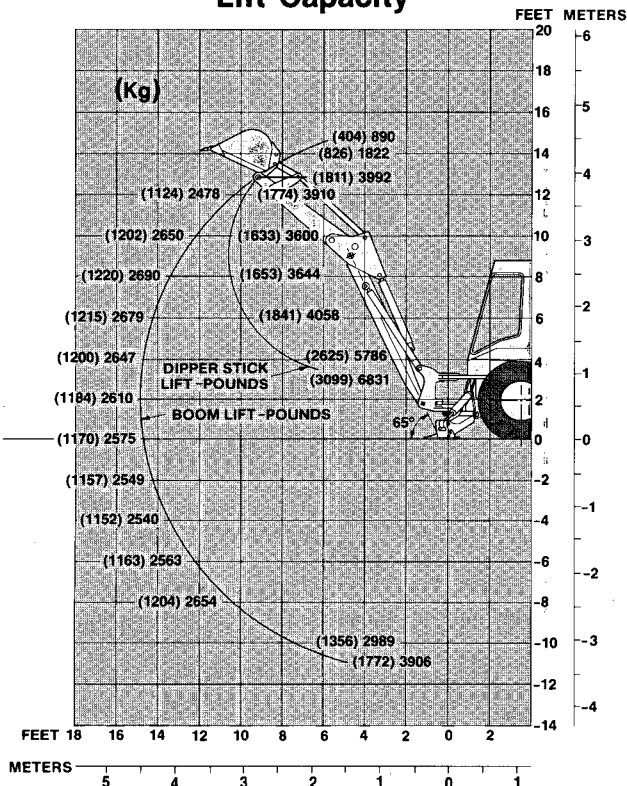
Operator's Compartment

- **Dual access**, either-side entry with canopy or optional cab level, uncluttered floor.
- **Resiliently mounted** for operator isolation from noise.
- **Convenient**, easy to reach, low effort controls for day-long productivity.
- **Advanced warning system** provides continuous operator awareness of machine condition.
- **Side mounted gauge panel** is visible to operator while operating either loader or backhoe.
- **Optional adjustable suspension seat** designed for added operator comfort.
- **Transmission disconnect switches** on loader lift and gear shift levers... fast, convenient actuation.
- **Rear-mounted hand throttle** for easy actuation from backhoe position.
- **Forward/Reverse direction control** easily operated with hand on steering wheel.

416 OPERATIONAL DATA



Lift Capacity



Machine Dimensions

	mm	ft/in
Overall transport length	6814	22'4"
Overall transport height	3423	11'3"
Overall width	2235	7'4"
Height to top of canopy	2713	8'11"
Height to top of cab	2713	8'11"
Height to top of exhaust stack	2760	9'5"
Height to top of steering wheel	1951	6'5"
Ground clearance (machine main frame)	295	11.6"
Front wheel tread	1780	5'10"
Rear wheel tread	1710	5'7"
Wheel base	2100	6'10.5"

NOTE: Specifications shown with 11L - 16, 10 PR front tires, 16.9 - 24, 8 PR rear tires, ROPS canopy. 4.27 m³/14' backhoe with 610 mm/24" trenching bucket, loader with 2235 mm/88", .76 m³/1.0 yd³ General Purpose bucket and standard equipment unless otherwise specified.


standard equipment

NOTE: Standard and optional equipment may vary outside U.S.A. Consult your Caterpillar Dealer for specifics.

Alternator, 52 amp, 12 volt.
Electric starting.
Suction fan.
Ether cold weather starting aid.
Fenders (rear).
Four speed synchro-mesh transmission.

Power steering.
Fast reversing shuttle, all gears.
Torque converter.
Oil disc brakes.
Parking brake.
ROPS canopy.
Adjustable seat.
Seat belt. (76 mm/3").

Front and rear halogen working lights (4).
Stop and tail lights (2).
Flashing hazard/signal lights.
Dry-type air cleaner.
Warning horn, front (electric).
Engine enclosures.

Mirror, rear view.
Tires —
Front 11L-16 10PR
Rear 16.9-24 8PR
Loader, self-leveling with transmission disconnect switch on single lever control.
Differential lock.
Tool box.
Instrument panel lights.
Throttles — hand and foot.
Vandalism protection.

Front grill, impact absorbing.
Backhoe, 4315 mm/14'2" center-pivot, 2 lever control.
Indicators: Air cleaner service. Clock hour meter. Hydraulic oil level sight gauge. Fuel level gauge, ammeter, voltmeter, tachometer. Oil pressure and coolant gauges (also have audible alarms). Torque converter oil temperature gauge.


optional equipment

(with approximate change in operating weights)

	Kg	Lb
Air conditioner	39	86
Altitude compensating turbocharged engine	20	45
Backup alarm (required in U.S.A.)	1	2
Backhoe control lever options (each)	9	20
Buckets	see page 5	
Cab, ROPS (includes heater, defroster and pressurizer)	231	509
Cooler, hydraulic oil	8	18
Cutting edge, bolt-on for loader bucket	39	85
Fan, operator's compartment	2	5
Floor mat, ROPS canopy	5	10
Four wheel drive	229	505
Guards:		
Hose guard, boom base	1	2
Boom cylinders	39	86
Stabilizer cylinders	59	129

	Kg	Lb
Hydraulic arrangement:		
3rd valve (for loader)	12	27
7th valve (backhoe) for stick mounted attachments	5	10
7th & 8th valve (backhoe) for additional circuits on std. stick	9	20
8th valve (backhoe) for unit equipped with extendable stick and second additional circuit	6	14
Additional hydraulic line to boom	4	8
Mirrors, outside mounted	17	39
Rotating beacon	5	10
Sound suppression, exterior	11	25
Speedometer	2	5
Stabilizer street pads	37	82
Stick, extendable	260	574
Suspension seat — vinyl	21	46
Suspension seat — fabric	15	33
Tooth tips options	See page 5	

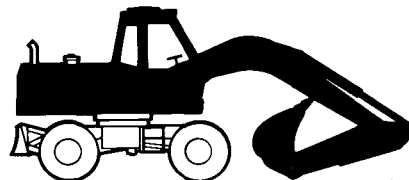
To build your future, a new generation of Caterpillar muscle.



D3B
48 kW
(65 hp)



IT12
48 kW
(65 hp)



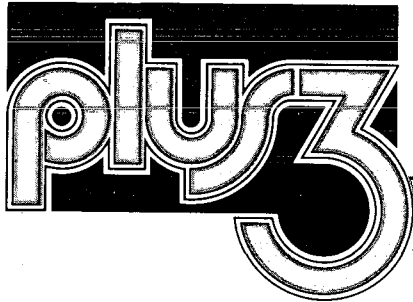
206
53 kW
(71 hp)



931
48 kW
(65 hp)

See your Cat Dealer for the most complete line available.

Materials and specifications are subject to change without notice.



MUSTANG "PLUS 3" USER GUARANTEE

These guarantees apply to:

Caterpillar model _____

S/N _____

Plus 3 Certificate # _____

Delivered to _____

Date _____

Mustang provides the following guarantees on this registered Caterpillar machine from the above date until the expiration of whichever occurs first: (1) 5,000 operating hours or (2) 36 months.

These guarantees also include Caterpillar Tractor Co.'s standard six month limited warranty.

Extended Power Train Warranty

The following power train components are warranted to be free from defects in material and workmanship during the extended limited warranty period:

- Engine (excluding radiator, alternator, starter, compressor, and other attachments)
- Torque converter
- Transmission
- Drive shafts
- Universal joints
- Differential
- Transfer gear group
- Drive axles
- Drive pumps
- Drive motor
- Pinion and bevel gear
- Steering clutches
- Steering brakes
- Final drive gear trains (up to, but not including the sprockets)

This warranty is limited to repair or replacement (including both parts and labor) of inspected parts determined to have been defective in material or workmanship. All extended power train warranty repairs must be performed at a location designated by Mustang. All machine transportation costs or field service travel expenses to and from this location shall be paid by you. This warranty does not apply to normal maintenance service (such as engine tune-up) or normal replacement of service or wear items.

Scheduled Oil Sampling (SOS) program is included at no charge with this

warranty. You are responsible for taking oil samples at designated intervals or invalidate your limited warranties.

This extended limited warranty coverage is subject to the following conditions and limitations:

- (1) Replacement parts provided are warranted for the remainder of the extended warranty period applicable to the product in which installed.
- (2) The machine may not be altered or modified in any manner which affects the mechanical operation as designed by Caterpillar Tractor Co.

Parts Availability

If you order a new Caterpillar part required to keep your machine in an operating condition, and Mustang Tractor does not deliver the part to you or give you reasonable notification that the part is available for pick-up at one of its facilities within 48 hours (excluding weekends and holidays), Mustang Tractor will furnish you, upon request, the part at no cost.

This availability guarantee applies for Caterpillar new replacement parts and parts for the following non-Caterpillar attachments:

None

This guarantee will not apply when parts are ordered by Mustang Tractor in connection with service work in progress. Parts furnished under either the Caterpillar standard warranty or this extended warranty will also not be covered by this parts availability guarantee. Parts included in this guarantee are those normally serviced by Caterpillar Tractor Co.

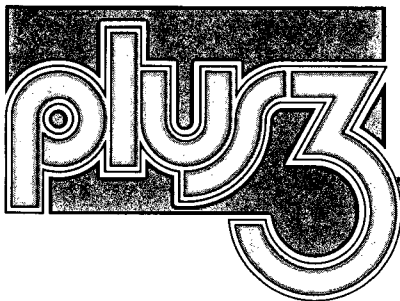
Machine Availability

When requesting Mustang Tractor to repair your machine to an operating condition and the repairs are not completed within 48 hours from time of arrival at the designated location or your call to Mustang Field Service, Mustang Tractor will provide a comparable machine at no cost, or, at Mustang Tractor's option, issue a credit equal to the daily rental charge on a comparable machine for each twenty-four (24) hour period, or portion thereof, until repairs are completed.

This guarantee shall be applicable for repairs on machines manufactured by Caterpillar and on the following non-Caterpillar attachments:

None

Mustang Tractor reserves the right to designate the place and method of repair.



General Conditions and Limitations

Applicable to all guarantees.

Parts orders and machine repair requests must occur during dealer normal working hours. The 48-hour guarantee period does not include holidays or weekends.

Neither the parts nor machine availability guarantees will apply to machines:

- (a) For repairs necessitated by misuse, abuse, negligence, or use of the machine beyond its rated capacities.
- (b) Which have been substantially damaged by collision, accident, flood, fire, vandalism or similar occurrence.
- (c) When delay results from strikes (Caterpillar, dealer, supplier, or carrier) acts of God or other occurrences beyond dealer's reasonable control.
- (d) Physically located outside of the U.S.

Machine transportation costs to and from the designated Mustang facility will be the customer's responsibility as will transportation of any machine loaned under the availability guarantee.

These guarantees are made by the named Caterpillar dealer exclusively and are not binding on Caterpillar Tractor Co. or any other Caterpillar dealer.

The availability guarantees and extended warranty may be transferred provided Mustang Tractor is given written notice of the change in machine ownership within 15 days.

Caterpillar Tractor Co. conducts Product Improvement Programs to improve machines sold to users. In the event a machine enrolled in "PLUS 3" is subject

to such a program, the availability guarantees and extended warranty will not apply to that improvement; however, Mustang Tractor will endeavor to schedule such product improvement at the user's convenience.

Remedies under the availability guarantees and extended warranty are limited to provisions of replacement parts, replacement machines/rental expense credit, and repairs specifically provided. Mustang tractor shall in no event be liable for any other losses, damages, costs or expenses claimed by you, including but not limited to, loss from failure of the machine to operate for any period of time, and all other direct, indirect, special incidental, or consequential damages, including all personal injury and property damage due to alleged negligence, strict liability or any other legal theory whatsoever. The availability guarantees and extended warranty are in lieu of all other warranties by Mustang Tractor, whether expressed or implied by law. Without limiting the generality of the foregoing, Mustang Tractor makes no warranty of merchantability or fitness of the machine for any particular purpose.

I UNDERSTAND AND AGREE WITH THE ABOVE STATED "PLUS 3" LIMITED WARRANTY.

Company

Authorized Signature

Date: _____

Dealer Name	Mustang Tractor & Equipment Company
Address	Box 1703 Lufkin, TX. 75901
Phone	409-639-5551
Contact	Royce Hill
Equipment #	0110 01100

**FARMERS SUPPLY**

CAREL RASBERRY, OWNER
Drawer 270 Hwy. 59 South
LIVINGSTON, TEXAS 77351



VOL 012 PAGE 499

9:00 AM
AUG 11 1986

GRACE BOSTICK, COUNTY CLERK
TYLER COUNTY, TEXAS

BY: *Grace Bostick*

Tyler County Commissioners Court
County Court House
Woodville, Texas 75979

"Bid on Rubber tired Loader and Backhoe"
"Bid opening 8-11-86"
10:00 AM

FARMERS SUPPLY

CAREL RASBERRY, Owner

VOL 012 PAGE 500

327-8171

HWY. 59 SOUTH

327-8118

DRAWER 270

LIVINGSTON, TEXAS 77351

SALES AND SERVICE



BOLENS



TRACTOR AND EQUIPMENT RENTAL

Livingston, Texas
August 8, 1986

Tyler County Commissioner's Court
Precinct #4
County Court House
Woodville, Texas

Gentlemen:

I would like to submit the following bid quotation on the following machinery.

One (1) new Case 580-SE Backhoe with enclosed specifications and serial number, and date of manufacture.

Case 580 SE Backhoe and Loader:

	Selling price==	\$27,674.00
Less trade in of 4500 Ford-----		1,500.00
	Net cash difference	\$26,174.00

Lease is figured on \$26,174.00

Lease at 7% APR

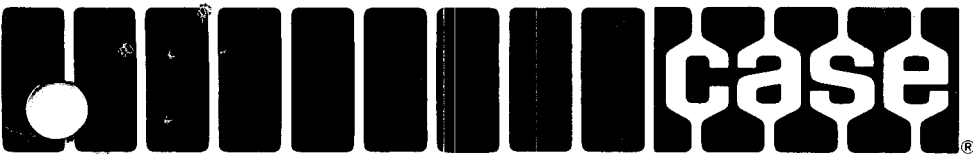
We can lease for 48 months @	\$623.12
We can lease for 42 months @	\$700.36
36 months @	\$803.49
30 months @	\$948.02
24 months @	\$1166.06
12 months @	\$2251.59

1st payment is to be in advance
County must furnish loss payable insurance to J.I. Case
Credit.

We have this unit in stock and can make immediate delivery.

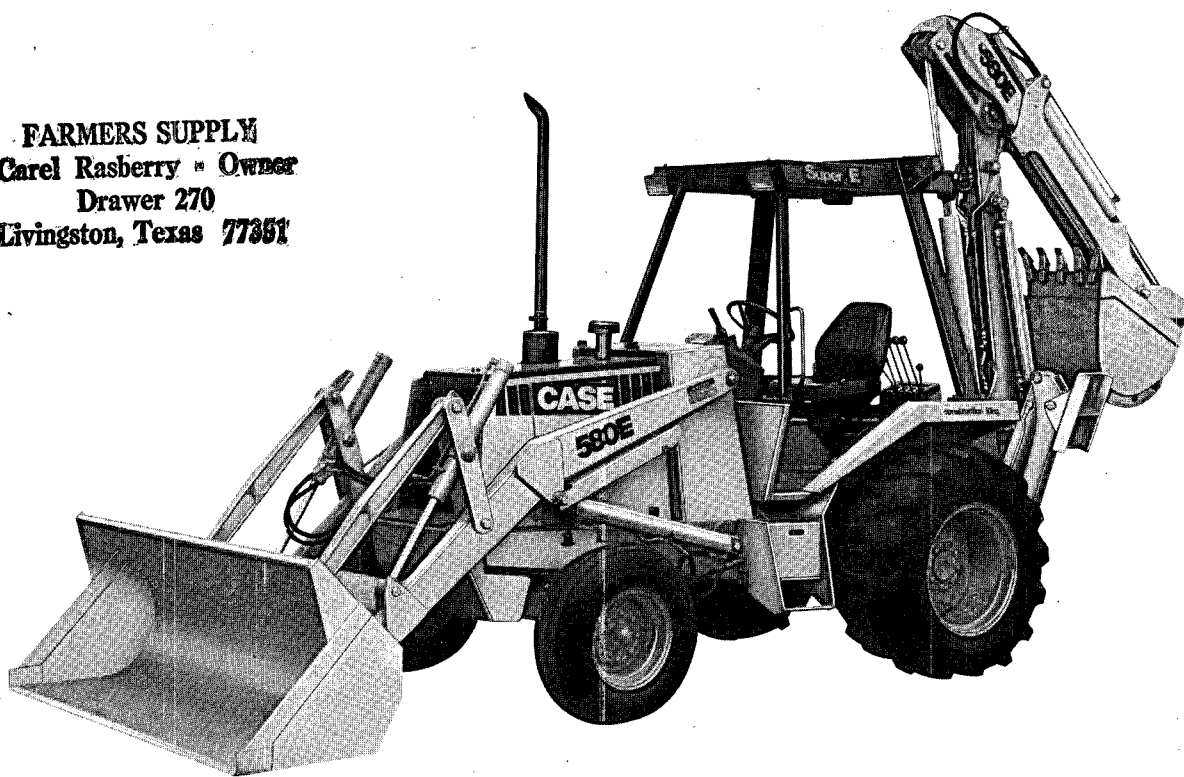
Thank you for the opportunity to bid.

Sincerely,
Carel Rasberry
Carel Rasberry
Farmers Supply



580 Super E Construction King®

FARMERS SUPPLY
Carel Rasberry - Owner
Drawer 270
Livingston, Texas 77351



63 (47 kW) NET FLYWHEEL HORSEPOWER

High torque, Case four cylinder 239 in³ (3917 cm³) diesel with matching power train and high capacity brakes

FIELD PROVEN SYNCHRONIZED TRANSMISSION

Four speed with power shuttle and torque converter.

CHOICE OF BACKHOES

14' (4.27 m) backhoe or 14'-18' (4.27 m-5.49 m) telescoping Extendahoe®. Over-center backhoe transport position for loading and roading stability.

5155 LB (2338 kg) LIFT CAPACITY SELF-LEVELING LOADER

Single lever controls bucket rollback, lift, dump, lower, float and return to dig.

HIGH PERFORMANCE — TANDEM GEAR PUMP HYDRAULICS

Provides flow to the loader, backhoe, and steering valve. Gives optimum speed and power during digging cycle.

UNITIZED MAIN FRAME

Absorbs heavy shock loads, maintains power train alignment, simplifies servicing.

COMPONENTIZED POWER TRAIN

Permits servicing of individual components without disturbance of the rest of the drive line.

OPERATOR CONVENIENCE

Roomy work platform. Isolated with rubber mounts to reduce noise and vibration. Sloping hood and grille and 4-way adjustable seat improves visibility and operator efficiency.

Unit shown is equipped with non-standard items.

J I Case

A Tenneco Company



Construction Equipment Division
700 State Street Racine, WI 53404 U.S.A.

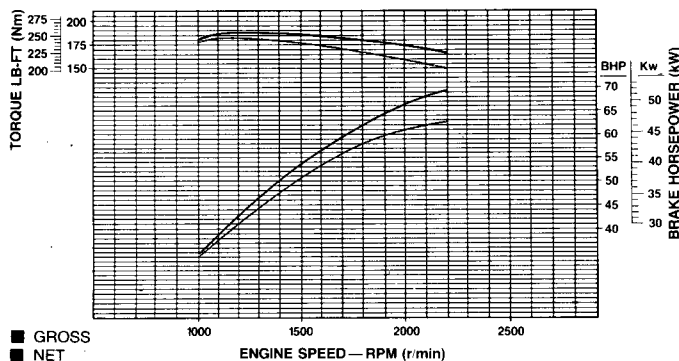
Specifications 580 Super E Tractor Construction King®

ENGINE

Make and Model	Case 4-390
Type of fuel	No. 2 diesel
No. of cylinders	4
Bore and stroke	4.02" x 4.72" (102 mm x 120 mm)
Displacement	239 in ³ (3.9 L, 3917 cm ³)
Compression ratio	18.5:1
Fuel induction	Injectors
Fuel supply	Injection pump
Air cleaner	Dry type—replacement element
Oil filter	Replaceable spin-on cartridge, full flow
Lubrication	Positive pressure
Cooling system	Pressurized—14 psi (96 kPa)
Horsepower	
Gross (1)	69 @ 2200 rpm (51 kW @ 2200 r/min)
SAE net (2)	63 @ 2200 rpm (47 kW @ 2200 r/min)
Max torque ft-lb	
Gross (1)	186 @ 1200 rpm (26 kg m @ 1200 r/min)
SAE Net (2)	181 @ 1200 rpm (25 kg m @ 1200 r/min)

(1) Gross engine horsepower or torque at flywheel per SAE J1349 specification.
(2) Net engine horsepower or torque at flywheel per SAE J1349 specification.

POWER CURVE



ELECTRICAL

System voltage	12 volts, negative ground
Battery	Maintenance free, 700 cold cranking amps at 32°F (0° C)
Alternator	42 amp

POWER TRAIN

Transmission: Full power shuttle and torque converter, 4 speed; sliding spur gear in 1st and 2nd. Synchromesh in 3rd and 4th permits on the go shifting up from 2nd to 3rd to 4th and back down from 4th to 3rd.

Torque converter: Single stage hydrokinetic type (2.78 to 1 ratio).

Reversing unit: Power hydraulic clutches.

Brakes: Individual or simultaneous foot actuated, hydraulic self-adjusting. 8" (203 mm) double disc, with 246 in² (1587 cm²) braking surface. Over-center hand-operated parking brake.

Final drives: Multiple gear reduction.

AXLES RATINGS

FRONT

Dynamic	44,000 lbs (19 958 kg)
Static	11,500 lbs (5216 kg)
Oscillation	22°

REAR

Dynamic	54,000 lbs (24 494 kg)
Static	13,500 lbs (6123 kg)

STEERING

Power steering	Hydrostatic
Hydraulic pump	Front mounted, positive displacement, gear type, tandem pump
Pump capacity	7 gpm @ 2200 rpm @ 2000 psi (26 l/min @ 2200 r/min @ 13 790 kPa)
Main relief setting	2100 ± 50 psi (14 479 ± 345 kPa)
Turning ratio (stop to stop)	2.75 turns
Steering cylinders (2)	1.5" dia x 6.5" stroke double acting (38 mm dia x 165 mm stroke)

SERVICE CAPACITIES

	U.S.	Litres
Cooling system		
w/heater	18.9 qt	17.9
w/o heater	18.2 qt	17.2
Fuel tank	26.5 gal	100
Engine oil		
w/filter	11 qt	10.4
Power shuttle	8 qt	7.6
Transaxle	20 qt	18.9
Hydraulic reservoir		
w/filter	12.5 gal	47.3
w/o filter	12 gal	45.4
total system	23.75 gal	89.9

TRAVEL SPEEDS — MPH (km/h)

Engine at full throttle, 17.5L x 24, R4 rear tires.

	FIRST	SECOND	THIRD	FOURTH
Forward	3.5 (5.6)	6.5 (10.5)	12.2 (19.6)	21.8 (35.1)
Reverse	3.1 (5.0)	6.0 (9.7)	11.1 (17.9)	19.6 (31.5)

580 SUPER E TIRES

	SIZE	PLY RATING	TREAD	PRESSURE PSI (kPa)
FRONT	7.50x16	10	(I1) rib	56 (386)
	8.00x16	10	(F3) truck tread	56 (386)
	11Lx16	10	(F3) truck tread	48 (331)
REAR	14.9 x 24	6	(R4) utility traction	20 (138)
	14.9 x 24	8	(R4) utility traction	24 (165)
	16.9 x 24	6	(R4) utility traction	18 (124)
	*16.9 x 24	8	(R4) utility traction	24 (165)
	17.5Lx24	6	(R4) industrial suregrip	16 (110)
*17.5Lx24	8	(R4) industrial suregrip	22 (152)	

*Must be used on machines equipped with Extendahoe. May also be used on machines equipped with non extendable backhoe.

TURNING CLEARANCE CIRCLE

With brakes	21'2" (6.45 m)
Without brakes	24'1" (7.34 m)

580 Super E Backhoe

HYDRAULIC SYSTEM

Hydraulic pump: Front mounted, positive displacement, gear type, tandem pump.

Pump capacity: 30 gpm @ 2200 rpm @ 2000 psi
(114 l/min @ 2200 r/min @ 13 790 kPa)

Control valve main relief: 2450 psi (16 892 kPa)

Filtration: 10 micron, full flow replaceable cartridge on return line. Condition indicator light for filter.

Backhoe control valve: Sectional four spool valve — boom, dipper, bucket, and swing. Foot or optional hand swing. Regeneration and hydraulic cushioned swing stops. Mono-cast two spool stabilizer valve with pilot checks.

Hydraulic lines: Steel tubing with brazed or flared fittings and wire braid high pressure hose with crimped, full flow fittings.

Backhoe cylinders:

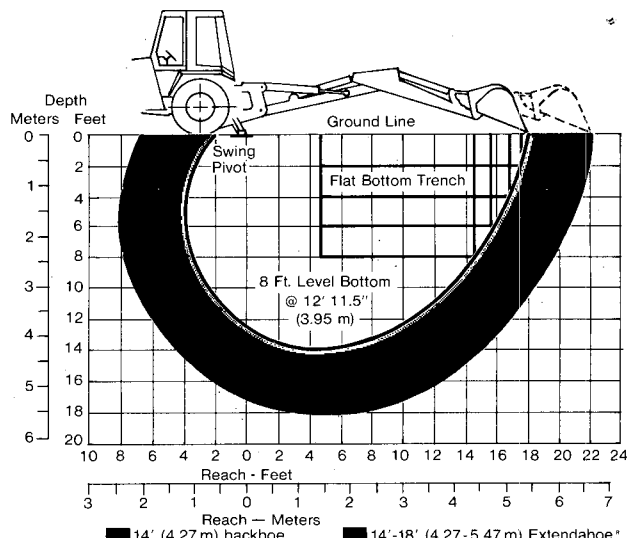
- Stabilizers (2) 4" dia x 21.77" stroke, 2" rod
(102 mm dia x 553 mm stroke, 51 mm rod)
- Swing (2) 4" dia x 11.2" stroke, 2" rod
(102 mm dia x 285 mm stroke, 51 mm rod)
- Boom (2) 3.2" dia x 42.1" stroke, 1.75" rod
(83 mm dia x 1.07 m stroke, 44 mm rod)
- Dipper (1) 4" dia x 33.87" stroke, 2" rod
(102 mm dia x 860 mm stroke, 51 mm rod)
- Bucket (1) 3.5" dia x 30.56" stroke, 2.5" rod
(89 mm dia x 776 mm stroke, 64 mm rod)
- Dipper extension (1) 3" dia x 48" stroke, 1.5" rod
(76 mm dia x 1.22 m stroke, 38 mm rod)

LIFT CAPACITY CHART — 14' (4.27 m) Backhoe*

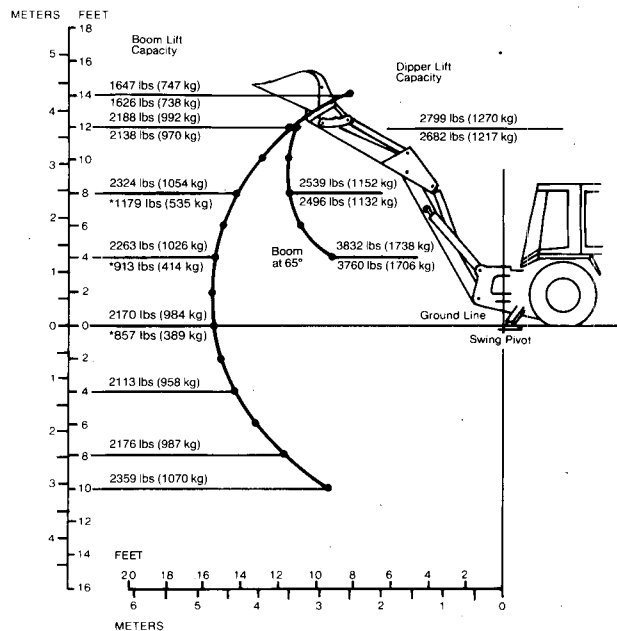
1. Lift capacity figures on this chart are 87% of the maximum lift force per SAE Definition J31 and J49 at 2450 psi (16 892 kPa) system relief pressure.
2. Top numbers/lift capacity within 45° either side of prime mover.
3. Bottom number/lift capacity anywhere within full swing arc.
4. *Figures are stability limited and 75% of tipping load.
5. Figures stated are determined by static tests and do not include dynamic factors.

(For additional lift capacities refer to operator's manual.)

DIG DEPTH CHART



LIFT CAPACITY CHART



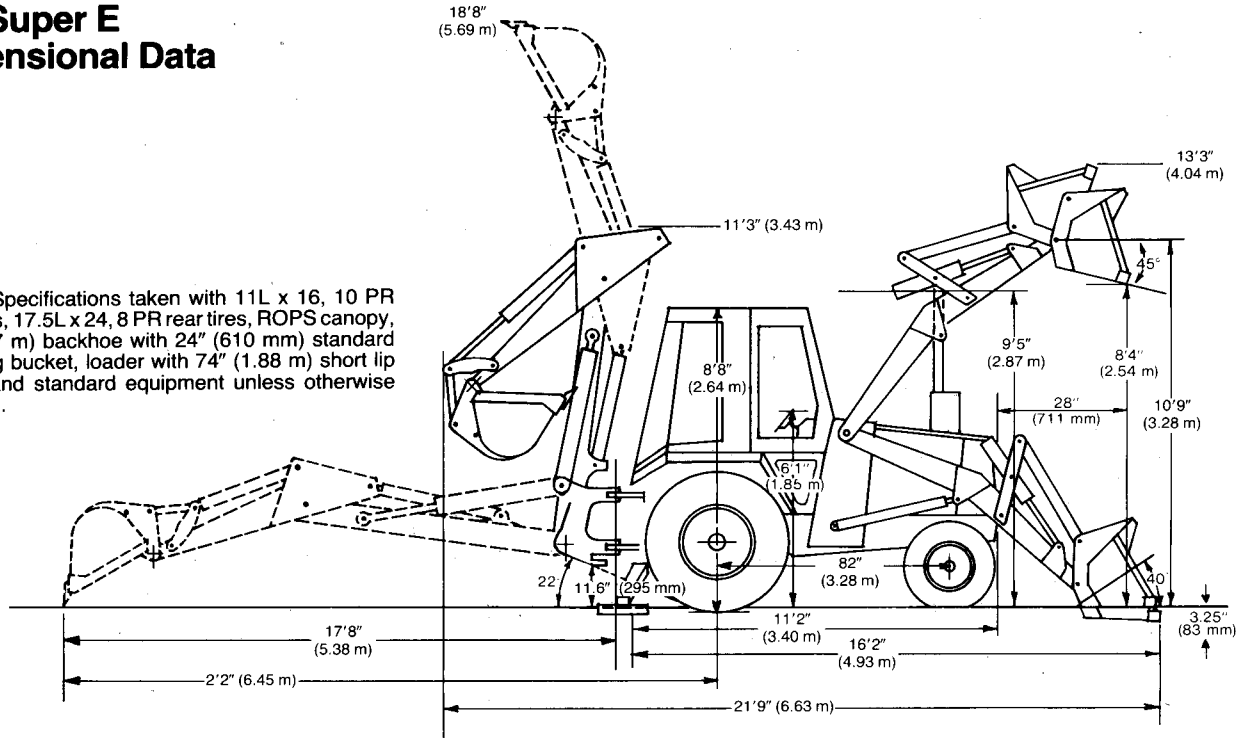
OPERATIONAL DATA—14' (4.27 m) Backhoe® and 14'-18' (4.27 m-5.49 m) Extendahoe®

	14' (4.27 m) Backhoe		14'-18' (4.27 m-5.49 m) Extendahoe®	
	RETRACTED	EXTENDED	RETRACTED	EXTENDED
Digging depth—SAE	14'2" (4.32 m)	14'7" (4.45 m)	14'4" (4.37 m)	18'3" (5.56 m)
with 24" high capacity bucket	14'7" (4.45 m)	21'2" (6.45 m)	14'9" (4.50 m)	18'8" (5.69 m)
Overall reach from rear axle centerline	21'2" (6.45 m)	17'8" (5.38 m)	21'2" (6.45 m)	25' (7.62 m)
Overall reach from swing pivot	17'8" (5.38 m)	11'2" (3.40 m)	17'9" (5.41 m)	21'7" (6.58 m)
Loading height	11'2" (3.40 m)	79" (2.01 m)	11'11" (3.63 m)	14'3" (4.34 m)
Loading reach	79" (2.01 m)	180°	69" (1.75 m)	108" (2.74 m)
Swing arc	180°	168°	180°	180°
Bucket rotation—#1 position	168°	151°	168°	168°
#2 position	151°	9' (2.74 m)	147°	147°
Stabilizer spread—operating position	9' (2.74 m)	6'9" (2.06 m)	9' (2.74 m)	9' (2.74 m)
Stabilizer spread—transport position	6'9" (2.06 m)	20°	6'9" (2.06 m)	6'9" (2.06 m)
Stabilizer angle—from straight	20°	11,535 lbs (51 309 N)	20°	20°
Digging force, bucket cylinder, SAE	11,535 lbs (51 309 N)	6015 lbs (26 755 N)	11,586 lbs (51 536 N)	11,586 lbs (51 536 N)
Digging force, dipper cylinder, SAE	6015 lbs (26 755 N)	12°	5835 lbs (25 954 N)	4082 lbs (18 154 N)
Leveling angle (maximum slope on which backhoe will make vertical cut)	12°		12°	12°

580 Super E

Dimensional Data

NOTE: Specifications taken with 11L x 16, 10 PR front tires, 17.5L x 24, 8 PR rear tires, ROPS canopy, 14' (4.27 m) backhoe with 24" (610 mm) standard trenching bucket, loader with 74" (1.88 m) short lip bucket and standard equipment unless otherwise specified.



TRACTOR

Overall length	11'2" (3.40 m)
Overall width	78" to 81" (1.96 to 2.06 m)
Height: to top of canopy	8'7" (2.62 m)
Height: to top of cab	8'8" (2.64 m)
Height: to top of exhaust stack	9'5" (2.87 m)
Height: to top of steering wheel	6'1" (1.85 m)
Ground clearance (tractor main frame)	9.13" (232 mm)
Front wheel tread	59" or 62" (1.5 or 1.6 m)
Rear wheel tread	62" (1.57 m)
Wheel base	82" (2.08 m)

LOADER

GENERAL PURPOSE BUCKET	SHORT LIP	LONG LIP
Overall length	15'9" (4.80 m)	16'2" (4.93 m)
Overall width	81" (2.06 m)	82" (2.08 m)
Overall operating height	13'3" (4.04 m)	13'3" (4.04 m)
Digging depth below ground— bucket flat	3.25" (83 mm)	3.25" (83 mm)
Height to bucket hinge pin	10'9" (3.28 m)	10'9" (3.28 m)
Dump angle at full height	45°	45°
Dump clearance full height 45° dump	8'7" (2.62 m)	8'4" (2.54 m)
Dump reach at full height 45° dump	25.5" (648 mm)	28" (711 mm)
Bucket rollback at ground line	40°	40°

4-in-1 BUCKET

Overall length	16' (4.88 m)
Height to bucket hinge pin	10'9" (3.28 m)
Digging depth below ground—bucket flat	5.25" (133 mm)

Dump angle at full height	52°
Dump clearance at full height 52° dump—clam	10' (3.05 m)
—bucket	8'7" (2.62 m)
Dump reach at full height 52° dump	27" (686 mm)
Bucket rollback at ground line	46°

BACKHOE

	14' (4.27 m)	EXTENDAHOE®	
		RETRACTED	EXTENDED
Overall length— transport			
Short lip bucket	21'9" (6.63 m)	22'2" (6.76 m)	N/A
Long lip bucket	22'2" (6.76 m)	22'7" (6.88 m)	N/A
4-in-1 bucket	21'9" (6.63 m)	22'5" (6.83 m)	N/A
Overall reach from rear axle centerline	21'2" (6.45 m)	21'2" (6.45 m)	25' (7.62 m)
Swing pivot	17'8" (5.38 m)	17'9" (5.41 m)	21'7" (6.58 m)
Overall height, maximum	18'8" (5.69 m)	18'8" (5.69 m)	22'3" (6.78 m)
Transport height	11'3" (3.43 m)	11'6" (3.45 m)	N/A
Overall width— transport	81" (2.06 m)	81" (2.06 m)	81" (2.06 m)
Ground clearance at backhoe main frame	11.6" (295 mm)	11.3" (287 mm)	11.3" (287 mm)
Angle of departure	22°	21°	21°

580 Super E Loader

HYDRAULIC SYSTEM

Hydraulic pump: Front mounted, positive displacement, gear type, tandem pump.

Pump capacity: 23 gpm @ 2200 rpm @ 2000 psi
(87 l/min @ 2200 r/min @ 13 790 kPa).

Control valve main relief pressure: 2450 psi (16 892 kPa).

Filtration: 10 micron, full flow replaceable cartridge on return line. Condition indicator light for filter.

Loader control valve: Mono cast two or three spool. Single lever control for lift and tilt. Lift lever has positive hold "float" position and "return-to-dig" feature.

Hydraulic lines: Steel tubing with brazed or flared fittings and wire braid, high pressure hose with crimped, full flow fittings.

Loader cylinders:

Lift (2)	3" dia x 31.5" stroke, 1.75" rod (76 mm dia x 800 mm stroke, 44 mm rod)
Tilt (2)	2.5" dia x 20" stroke, 1.5" rod (64 mm dia x 508 mm stroke, 38 mm rod)
Clam (2)	3" dia x 9" stroke, 1.75" rod (76 mm dia x 229 mm stroke, 44 mm rod)

LOADER BUCKET SIZES (Capacities SAE)

WIDTH		TYPE	HEAPED		STRUCK	
In	m		yd ³	m ³	yd ³	m ³
74	1.88	Short lip	.78	.60	.67	.50
82	2.08	Long lip	1.00	.76	.87	.67
82	2.08	4-in-1	1.00	.76	.81	.62

OPERATIONAL DATA (General Purpose Bucket)

Lift capacity to full height	5155 lbs (2338 kg)
Height to bucket hinge pin-raised	10'9" (3.28 m)
Bucket rollback at ground line	40°
Breakout force - combined	7600 lbs (33 805 N)
Dump angle at full height	45°
Grading angle	110°

	SHORT LIP	LONG LIP
Digging depth below ground line—bucket flat	3.25" (83 mm)	3.25" (83 mm)
Dump clearance at full height		
height 45° dump	8'7" (2.62 m)	8'4" (2.54 m)
Dump reach at full height		
45° dump	25.5" (648 mm)	28" (711 mm)
Reach—bucket on ground	71" (1.80 m)	77" (1.96 m)
Raising time to full height	5.2 sec	5.2 sec
Bucket dumping time	1.0 sec	1.0 sec
Lowering time, power down	3.0 sec	3.0 sec
Return-to-dig	4.1 sec	4.1 sec

OPERATIONAL DATA (4-in-1® Bucket)

Lift capacity to full height	4390 lbs (1991 kg)
Height to bucket hinge pin	10'9" (3.28 m)
Bucket rollback at ground line	46°
Breakout force	7040 lbs (31 314 N)
Dump angle at full height	52°
Grading angle—clam closed	103°
Digging depth below ground line	
—bucket flat	5.25" (133 mm)
Digging depth—using clam	47" (1.19 m)
Digging depth—clam open	5" (127 mm)
Dump clearance at full height	
52° dump—clam	10' (3.05 m)
52° dump—bucket	8'7" (2.62 m)
Dump reach at full height—52° dump	27" (686 mm)
Reach—bucket on ground	77" (1.96 m)

Raising time to full height	5.2 sec
Bucket dumping time	1.0 sec
Return-to-dig	4.1 sec
Width of dozer cutting edge	82" (2.08 m)
Maximum clam opening	37" (940 mm)
Moldboard height	36" (914 mm)

TURNING CLEARANCE CIRCLE

Bucket rollback—hinge pin at SAE carry position	
With brakes	30'3" (9.22 m)
Without brakes	32'5" (9.88 m)

THREE POINT MOD HITCH

Hydraulic pump: Front mounted, positive displacement, gear type, tandem pump.

Pump capacity: 23 gpm @ 2200 rpm @ 2000 psi
(87 l/min @ 2200 r/min @ 13 790 kPa)

Main relief pressure: 1800 PSI (12 411 kPa)

Control valve: 4 spool sectional valve for hydraulic control of lift, tilt, pitch and auxiliary with "float" detent in the lift spool. Single spool sectional valve for hydraulic control of lift and mechanical adjustment of tilt and pitch.

Mod hitch cylinders:

Lift (1)	3" dia x 8.4" stroke, 1.5" rod (76 mm x 214 mm stroke, 38 mm rod)
Tilt (1)	2.5" dia x 6.3" stroke, 1.25" rod (64 mm x 160 mm stroke, 32 mm rod)
Pitch (1)	2.5" dia x 7" stroke, 1.25" rod (64 mm x 178 mm stroke, 32 mm rod)



Equipment Attachments

STANDARD EQUIPMENT

TRACTOR

Air cleaner, dry type with replaceable cartridges • Anti-freeze solution to -20°F (-29°C) • Axle (front), heavy-duty, fixed tread • Brakes, hydraulic • Brake, parking, over-center • Electrical system, 12 volt • Engine, 63 net h.p. (47 kW) Case 4-390 diesel • Fenders, rear • Floor plates • Fuel opening, lockable • Gauges and Instruments: air cleaner restriction light, alternator charge warning lamp, condition light for loader and backhoe hydraulic system filter, converter temperature gauge, engine oil pressure warning light, engine water temperature gauge, fuel level gauge, hourmeter, tachometer, voltmeter • Grille, heavy-duty • Headlights, two shock mounted, quartz halogen • Muffler, upright oval with deflector • Oil cooler, hydraulic • Oil filter, full flow • Power shuttle, with torque converter, 4-speed transaxle with differential lock • Radiator opening, lockable • Rear lights, one quartz work and one red tail • Reservoir, common for steering, loader and backhoe • ROPS canopy on isolated operator's compartment • Safety belt, seat mounted • Seat, Easy Ride with single lever turn-around adjustment • Side panels, full length of engine, lockable • Steering, hydrostatic • Throttle, hand and foot • Tires (front) 7.50 x 16, 10 PR, I1 • Tires (rear), 14.9 x 24, 6PR, R4 utility traction tread • Toolbox • Wrapper, front.

LOADER

All tractor standard equipment • Single lever control • Hydraulic system, complete • Indicator, bucket level • Loader (less bucket) • Return-to-dig • Self-leveling • Support strut, lift arm.

14' (4.27 m) BACKHOE

All tractor and loader standard equipment • Hydraulic system, complete, including three lever, footswing control • Over-center backhoe (less bucket) Model 35C with quick disconnect mounting • Stabilizers with two position cleated pads.

14'-18' (4.27 m-5.49 m) EXTENDAHOE®

All tractor, loader and backhoe equipment • Hydraulic telescoping Extendahoe accessory hydraulics and front counterweight.

OPTIONAL EQUIPMENT

TRACTOR

Air conditioning • Alarm, backup • Anti-freeze to -40°F (-40°C) • Beacon rotating • Drawbar, swinging or rigid • Emblem, SMV • Floor mat • Full lockup package • Hitch, modular 3-point • Interior package, deluxe adjustable suspension seat, floor mats, fender and post covers • Horn • Lights, combination tail, stop, directional and flasher, two quartz work (canopy only) • Muffler, spark arresting • Paint, special • ROPS cab with air filtration, defogger, heater and pressurization • Seat, suspension • Start kit, cold weather • Tires, various sizes—see tractor section • Weights, front end.

LOADER

All tractor optional equipment • Accessory hydraulics • Bucket teeth • Rear counterweight • 82" (2.08 m) long lip bucket, 74" (1.88 m) short lip bucket, (2.08 m) 4-in-1® bucket.

BACKHOE

All tractor and loader optional equipment • Backhoe floor mat • Boom lockout • Counterweight, front • Dual lever backhoe controls • Street-cemetery stabilizer pads • 12" (305 mm), 18" (457 mm), 24" (610 mm), 30" (714 mm) standard duty trenching buckets • 18" (475 mm), 24" (610 mm), 30" (762 mm), 36" (914 mm) heavy-duty trenching buckets • 24" (610 mm) Hi-capacity bucket.

APPROXIMATE SHIPPING WEIGHTS

NOTE: Specifications taken with 11L x 16 front tires, 17.5L x 24 rear tires, ROPS canopy and standard equipment unless otherwise specified.

TRACTOR W/LOADER (Less Bucket)

Without rear counterweight 7580 lbs (3438 kg)
Rear counterweight (required
with no rear attachments) add 1495 lbs (678 kg)
Cab add 320 lbs (145 kg)
Air conditioning add 30 lbs (13.6 kg)

TRACTOR/LOADER W/BACKHOE (Less Buckets)

14' (4.27 m) backhoe 10,660 lbs (4835 kg)
Extendahoe® 12,060 lbs (5470 kg)
Front counterweight (required w/Extendahoe)
. add 800 lbs (363 kg)

LOADER BUCKETS (Optional)

74" (1.88 m) short lip 600 lbs (272 kg)
82" (2.08 m) long lip 760 lbs (345 kg)
82" (2.08 m) 4-in-1® 1130 lbs (513 kg)

BACKHOE BUCKETS (Optional)

	Standard Trenching	Heavy-Duty Trenching
12" (305 mm)	198 lbs (90 kg)	N/A
18" (457 mm)	238 lbs (108 kg)	322 lbs (146 kg)
24" (610 mm)	270 lbs (122 kg)	380 lbs (172 kg)
30" (762 mm)	306 lbs (139 kg)	410 lbs (186 kg)
36" (914 mm)	346 lbs (157 kg)	458 lbs (208 kg)
24" (610 mm)	405 lbs (184 kg)	(special high capacity trenching bucket)

MOD HITCH

3 point hitch 700 lbs (321 kg)

Extendahoe, 4-in-1 and Construction King are trademarks of the J I Case Company.
NOTE: All specifications are stated in accordance with ICED definitions or SAE standards or recommended practices, where applicable.

IMPORTANT

J I Case Company reserves the right to change these specifications without notice and without incurring any obligation relating to such change.

Sold and serviced by:

AGREEMENT by and between _____
located at _____, City of _____
State/Province of _____, its successors, assigns, and/or nominees (hereinafter called "LESSOR")
and the undersigned Municipality (hereinafter called the "LESSEE").

1. DESCRIPTION OF EQUIPMENT.

LESSOR has purchased the equipment described below (hereinafter referred to as "Equipment") from the manufacturer and simultaneously LESSEE hereby leases the Equipment from the LESSOR subject to the terms and conditions set forth below:

2. TERM OF AGREEMENT:

The term of this Agreement shall be _____ months, beginning on _____, 19_____, and ending on _____, 19_____.

3. PAYMENT.

a. LESSEE agrees to pay to LESSOR a total of payments of \$ _____ consisting of a principal amount of \$ _____, plus interest applied to the principal at the rate of _____% per annum which results in a finance charge of \$ _____ according to the following schedule:

- 1. An advance payment in the sum of \$ _____ to be applied to the first rental period.
- 2. The balance of the total of payments to be payable in _____ payments of \$ _____ each due at the beginning of each _____ month portion beginning the _____ day of _____, 19_____.

b. LESSEE hereby agrees to pay interest on each payment past due more than ten (10) days at the highest contract rate allowed by law.

4. MUNICIPALITY'S OPTION TO PURCHASE.

LESSOR hereby grants to LESSEE (municipality) the option to purchase the Equipment, provided that LESSEE gives notice to LESSOR, in writing, of his intention to exercise the option at least _____ days prior to the expiration of this Agreement, and provided further that LESSEE'S right to so purchase the Equipment is conditioned on LESSEE'S complete performance of all the terms and provisions of this Agreement on its part to be performed, including full compliance with the payment as specified herein.

- a. Should LESSEE exercise the option to purchase, _____% of the portion of each payment applied to principal paid hereunder shall be applied to the purchase price of the Equipment. On receipt of the balance of the purchase price by LESSOR, together with a sum equal to any new of applicable unpaid sales and use taxes, LESSOR will transfer title of the Equipment to LESSEE, and will deliver, on written request, written evidence of the transfer of such title.
- b. The Purchase Price of the Equipment applicable to this option to purchase is the sum of \$ _____.

5. LOCATION OF EQUIPMENT.

- a. The Equipment shall be located at _____ during the entire term of this Agreement. LESSEE shall not, without the prior written consent of LESSOR, permit the Equipment to be removed from this location.
- b. At the request of LESSOR, LESSEE will join LESSOR in executing one or more Financing Statements, pursuant to the Uniform Commercial Code or other registration law applicable to the location of the Equipment and/or the LESSEE, in form satisfactory to LESSOR; LESSEE will pay the cost of filing the Financing Statement(s) in all public offices wherever filing is deemed by LESSOR to be necessary or desirable.

6. WARRANTY.

LESSOR makes no representations or warranties with respect to the Equipment set forth herein. Any warranties provided by LESSOR on the Equipment set forth herein shall be given to LESSEE under separate agreement provided by the manufacturer of the Equipment, the receipt whereof is hereby acknowledged by LESSEE.

7. MUNICIPALITY RESPONSIBILITIES.

- a. LESSEE assumes and will pay all costs and expenses of any character, arising from the use, possession, or maintenance of said Equipment.
- b. LESSEE shall keep the Equipment free of all liens, taxes, encumbrances and seizure or levy; shall not use same illegally, shall not damage, abuse, misuse, abandon or lose said Equipment; shall not part with possession thereof, whether voluntarily or involuntarily or transfer any interest therein.
- c. LESSEE at its own cost and expense shall maintain property damage insurance against "all-risk of physical damage" in such amounts as LESSOR may reasonably require. Such insurance shall be in a form and with companies as LESSOR shall approve, which approval shall not be unreasonably withheld, shall name LESSOR as an additional insured and shall provide that such insurance may not be cancelled or altered as to LESSOR without at least ten (10) days prior written notice to LESSOR. LESSEE shall delivery to LESSOR on or before the date on which the Equipment is delivered evidence satisfactory to LESSOR os such insurance.
- d. Upon execution of this Agreement, LESSEE shall provide LESSOR with an OPINION OF COUNSEL substantially in the form annexed hereto as Exhibit A.

8. LESSOR RIGHT OF INSPECTION.

LESSOR shall have the right at any time to enter the premises occupied by the Equipment and shall be given free access thereto and afforded necessary facilities for the purpose of inspection.

9. NON-APPROPRIATION.

If funds are not allotted by the LESSEE for the next fiscal period sufficient to continue making the payments set forth in Section "3" hereof, LESSEE may terminate this Agreement upon the expiration of the then current fiscal year. LESSEE agrees to provide LESSOR immediate notice of its intention to terminate.

10. NON-SUBSTITUTION.

The Lessee agrees that in the event the Lessee exercises its right to terminate this lease in accordance with the non-appropriation provisions contained herein, the Lessee will not purchase, lease, or rent other equipment for the purpose of performing the functions and projects which were to be performed by the leased equipment for a period of ninety (90) days from the date of termination of this Lease.

11. EXPIRATION OF AGREEMENT.

- a. At the expiration of the term of this Agreement as set forth in Section "2", and if LESSEE has elected not to exercise an option to purchase described in Section "4", LESSEE shall be responsible for the delivery of the Equipment to a place designated by LESSOR.
- b. At its option, LESSOR may enter the premises of LESSEE for the purpose of effecting the removal of the Equipment to the location designated by LESSOR. If LESSOR exercises this option, LESSEE shall be responsible for the costs associated with the removal of the Equipment to the location designated by LESSOR.

12. EVENTS CONSTITUTING LESSEE DEFAULT.

LESSOR may terminate this Agreement immediately upon the occurrence of any of the following events:

- a. LESSEE fails to pay when due any of the payments, or to perform, or rectify breach, of, any obligation assumed by LESSEE in this Agreement.
- b. LESSEE makes an assignment for benefit of creditors, or is subject to any receivership, insolvency or bankruptcy proceedings.
- c. Any other event which causes LESSOR, in good faith, to deem itself insecure.

13. RIGHTS AND REMEDIES OF LESSOR UPON DEFAULT.

Upon the occurrence of any of the events of default described in Section "12", and at any time thereafter, LESSOR may, in its discretion, exercise any one, or all, of the following rights or remedies:

- a. To accelerate all the payments described herein and declare them immediately due and payable.
- b. LESSEE shall be liable to LESSOR for an amount equal to the sum of the payments accelerated pursuant to Subsection "a" immediately above; said sum to be immediately due and payable as liquidated damages and not as a penalty.
- c. To require LESSEE to assemble Equipment at LESSEE'S expense, and make it available to LESSOR at a place to be designated by LESSOR. LESSOR may enter the premises of LESSEE for the purpose of peacefully exercising the rights of LESSOR set forth in this subsection.

14. WAIVER.

Failure of LESSOR to exercise any right or remedy, including but not limited to, the acceptance of parties or delinquent payments, shall not be a waiver of any obligation of LESSEE or right of LESSOR or constitute a waiver of any other similar default subsequently occurring.

15. ASSIGNMENT.

- a. BY LESSOR: LESSOR may assign this Agreement and in the event of such assignment, LESSEE shall perform all promises herein to such Assignee as the owner hereof. After LESSEE receives notice of assignment hereof, LESSEE shall make all payments hereunder direct to the holder hereof and LESSOR shall not be the agent of the holder for transmission of payments or otherwise.
- b. BY LESSEE: LESSEE may not assign, transfer or delegate its rights or obligations under this Agreement without the consent of LESSOR in writing.

16. ENTIRE AGREEMENT.

This Agreement is and shall be deemed the complete and final expression of the agreement between the Parties as to matters herein contained and relative thereto, and supersedes all previous agreements between the Parties pertaining to such matters. It is clearly understood that no promise or representation not contained herein was an inducement to either Party or was relied upon by either Party in entering into this Agreement.

17. MODIFICATION.

No letter, or other form of communication, passing between the Parties hereto, covering any matter during the effective period of this Agreement, shall be deemed a part of this Agreement, nor shall it have the effect of amending or modifying this Agreement, unless said communication distinctly states that said communication is to constitute a part of this Agreement and is to be attached as a rider to this Agreement and is signed by the Parties hereto.

18. CAPTIONS.

Captions contained in this Agreement are inserted only as a matter of convenience and in no way define, limit or extend the scope or intent of this Agreement or any provision thereof.

19. NOTICE.

This deposit of written notice in the mails in an envelope certified or registered with postage prepaid and addressed to the LESSEE, at the address shown below, or to LESSOR at the address shown below, shall constitute notice pursuant to this Agreement.

20. AUTHORITY TO CONTRACT.

The execution and delivery of this Agreement will not violate or constitute a breach of any agreement or restriction to which LESSEE is a party or is subject.

IN WITNESS WHEREOF, the Parties hereto have caused this Agreement to be executed on the _____ day of _____, 19_____.

LESSOR:

LESSEE/MUNICIPALITY:

 By _____
 Its _____
 Date _____

 By _____
 Its _____
 Date _____

LESSOR'S address for notices under this Agreement:

LESSEE'S address for notices under this Agreement:

Street _____
 City _____
 State/Province _____

Street _____
 City _____
 State/Province _____

Zip/Postal Code

Zip/Postal Code

ASSIGNMENT (With Full Recourse)

The within Agreement, together with the indebtedness and all rights therein described, is hereby assigned with full recourse, transferred, conveyed and set over unto J I CASE CREDIT CORPORATION for its successors or assigns, for its or their own use forever, with full power and authority with regard thereto subject nevertheless to the conditions therein contained and to the rights therein granted according to law and subject to the provisions of the current Retail Financing Agreement between Assignor and Assignee, and each assignor represents and warrants the said instrument as genuine and in all respects what it purports to be and has no knowledge of any fact impairing the validity thereof, and that there are no set-offs or counterclaims against the same. Payment of the within Agreement according to its terms is hereby guaranteed by the undersigned.

Lessor: _____
 By: _____ (Assignor)
 Title: _____



J. I. Case
A Tenneco Company

MACHINERY INVOICE

0061 - DALLAS CE
TM02 - DON WINKLE

F-2481
Commitment
To
Quality
US 0061

PLANT BURLINGTON	SHIPPED FROM IA IOWA	FROM CODE 13	DEALER NO. 012340	DM/DR TM02	TO CODE 41	INVOICE DATE 06/12/86	INVOICE NO. N6- 11885-U1
A RASBERRY, INC. D/B/A FARM DRAWER 270 HIGHWAY 59 SOUTH LIVINGSTON TX 77351 U.S.A.		SN RASBERRY, INC. D/B/A FARM HL HIGHWAY 59 SOUTH IO LIVINGSTON TX PA LIVINGSTON TX D LIVINGSTON TX T 77351 U.S.A. O A T		DEALER ORDER NO. 3796-3803		BR/REG ORDER NO. 01006184425	
				PLANT INVOICE DATE 06/12/86		PLANT INVOICE NO. B527151	

SHIP VIA WARREN TRK	PPD. X	COLL. X	DATE SHIPPED 06/11/86	CAR INITIAL AND NO.
------------------------	-----------	------------	--------------------------	---------------------

SALES CODE	ORDERING		DESCRIPTION	SHIP.	PRICE EACH	VOL.
	CODE	SECT				
403503	340	01	580 SUPER E SERIES	1		
	G	02	580SE 2WD LDR/BACKHOE TRACTOR	1		
	D	03	POWER SHUTTLE W/TORQUE CONVERT	1		
	H	04	11LX16,10PR,F3 TIRES/W WHEELS	1		
	Y	05	17.5LX24,8PR,R4 TIRES W/WHEELS	1		
	C	06	CANOPY - ROPS	1		
	A	07	NO POWER TAKE-OFF	1		
	A	08	NO 3-POINT HITCH	1		
	R	09	LOADER BUCKET - 82" LONG LIP	1		
	G	10	HD TRENCHING BUCKET - 24"	1		
C1489	TJ	11	ALARM - BACKUP	1		
	ML	11	LOCKUP PACKAGE	1		
	TL	11	LIGHTS	1		
	SM	11	SLOW MOVING VEHICLE EMBLEM	1		
			EXCISE TAX UNIT SUB TOTAL TRANSPORTATION 11735 LBS			V N

Acyl Diesel Engine w/ 63 SAEMct hp.

PRODUCT ID NO. 0017038298UT58SE26	ENGINE SERIAL NO. 0044163465	TRANSMISSION 0016295295	BACKHOE 0017432091	TOTAL : \$
--------------------------------------	---------------------------------	----------------------------	-----------------------	------------

SCHEDULE OF TERMS					
INTEREST DATE	MATURITY DATE	NO.	START DATE	END DATE	AMOUNT
04/01/87	04/01/87				

DEALER'S INVOICE

Harrell Machinery, Inc.
P.O. Box 3327
Lufkin, Texas 75903

Tyler County Commission Court
PCT. IV
Woodville, Texas 75979

Vol. 012 Page 501

Time 9:25 AM

JUN 7 1986

GRACE BOSTICK, COUNTY CLERK
TYLER COUNTY, TEXAS

BY: *Sammie Reynolds*

SAMMIE REYNOLDS

BID ON BACKHOE



MACHINERY INC.

P. O. Box 3327
Lufkin, Texas 75903
409/634-8801



VOL 012 PAGE 502

11 August 1986

Tyler County Commissioners Court
PCT. IV
Woodville, Texas 75979

Gentlemen:

We are pleased to quote on the following New John Deere 310-C Backhoe Loader equipped as follows:

- 1 - John Deere 310-C Backhoe Loader
- 4 Cylinder, 65 H.P. Diesel Engine
- 12 Volt Electrical System 180 min. Reserve
- 12,400 LB. Operating Weight
- Backhoe Digging Depth 14Ft. 3in.
- 1 Cu. Yd. Loader Bucket with Return to Dig
- 16.9 - 24 8PR R-4 Rear Tires
- 11L15 8PR F - 3 Front Tires
- ROPS with 2 inch Seat Belt
- Suspension Vinyl Seat
- Reversible Stabilizer Pads
- 24 In. Backhoe Bucket
- Self Adjusting Wet Disk Brakes
- Inboard Planetary Final Drives
- Full Power Shift Reverser
- Differential Lock
- Vandal Protection



P. O. Box 3327
Lufkin, Texas 75903
409/634-8801



VOL 012 PAGE 503

Bid Continued - Page 2

Warranty: Six Months Factory Warranty with Free Travel Time & Mileage.
An Additional Eighteen Months or 3000 Hours (Whichever Occurs
First) Extended Powertrain Warranty.

Net Price FOB Job Site -	\$27,470.00
Less Ford Backhoe -	<u>- 3,000.00</u>
NET PRICE AFTER TRADE IN -	\$24,470.00

Monthly Lease Purchase Payment For 3 Years without Trade - \$849.10

Monthly Lease Purchase Payment For 3 Years with Trade - \$756.37

Thank you for allowing Harrell Machinery, Inc. the opportunity to bid on your equipment needs. If we can be of any further assistance, please do not hesitate to call on us.

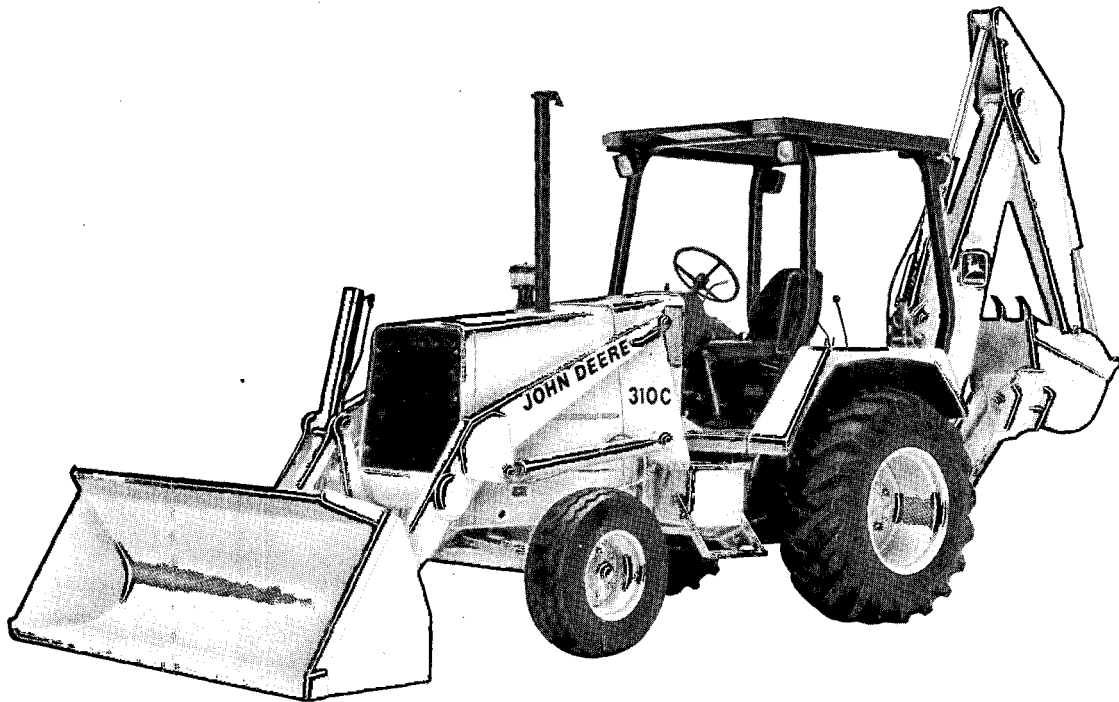
Sincerely,

Glen McDaniel
Salesman

GM/djc

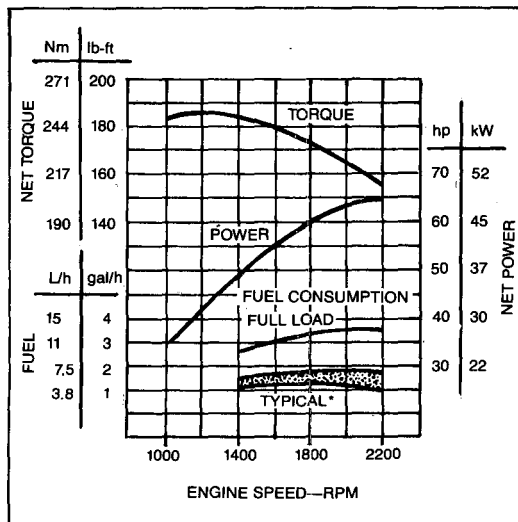


310C BACKHOE LOADER



Model shown may include options

ENGINE PERFORMANCE



*Depending on operating variables

FEATURES

- 65 SAE net hp (48.5 kW)
- Backhoe digging depth (SAE) 14 ft. 3 in. (4.34 m)
- Unitized frame—pin-on backhoe
- Isolated engine and operator's station
- Walk-in front entry
- Designed-in quietness
- Open-center hydraulic system
- O-ring face seal hydraulic plumbing
- Weight distributed for working stability
- Self-adjusting hydraulic wet-disk brakes
- Inboard planetary final drives
- Transaxle 1st and 2nd collar shift, 3rd and 4th synchronized
- Full-power-shift reverser
- Torque converter
- Single-lever loader control
- Two-lever backhoe control
- Two-lever stabilizer control with anti-drift lock-outs

- Multi-adjustable swing-around seat
- Hydrostatic power steering
- Optional cab w/Integral ROPS/FOPS
- Vandal protection w/built-in locks

ADD VERSATILITY WITH:

- Mechanical front-wheel drive with:
 - Offset driveshaft for better ground clearance
 - Extendable dipperstick

310C BACKHOE LOADER SPECIFICATIONS

Specifications and design subject to change without notice. Wherever applicable, specifications are in accordance with SAE standards. Except where otherwise noted, these specifications are based on a unit with 17.5L-24, 10 PR, R4 rear tires, 11L-15, 8 PR, F3 front tires, 1.0 cu. yd. (0.76 m³) loader bucket, 24-in. (610 mm) standard-duty backhoe bucket, ROPS/FOPS, full fuel tank and 175 lb. (80 kg) operator.

Rated Power @ 2200 rpm:	SAE	DIN 70 020
Net	65 hp (48.5 kW)	49.5 kW
Gross	69 hp (51.5 kW)	

Net engine power is with standard equipment including air cleaner, exhaust system, alternator, and cooling fan, at standard conditions per SAE J1349 and DIN 70 020, using No. 2-D fuel @ 35 API gravity. No derating is required up to 5000 feet (1500 m) altitude. With optional ACT*, 10,000 feet (3050 m) altitude. Gross power is without cooling fan.
*Altitude compensating turbocharger

Engine: John Deere 4-239D

Type	4-stroke cycle, naturally aspirated diesel
Bore and stroke	4.19 x 4.33 in. (106.5 x 110 mm)
No. of cylinders	4
Displacement	239 cu. in. (3.917 L)
Maximum net torque @ 1200 rpm	186 lb-ft (252 Nm) (25.7 kg-m)
	20 percent torque rise
Cooling fan	Suction
Compression ratio	17.8 to 1
Lubrication	Pressure system w/full-flow filter and cooler
Main bearings	5
Air cleaner	Dry
Electrical system	12 volt
Alternator	51 amps

Torque Converter:

Single stage, dual phase, overrunning stator, 11-in. (280 mm) diameter, stall torque ratio 2.83:1.

Reverser:

Modulated, full-power shift with multiple wet-disk clutches. Reverser operating lever at left of steering wheel.

Transmission:

Manual shift with first and second speeds having sliding collar engagement and third and fourth speeds engaged with cone-type synchronizers. Single shift lever, floor mounted.

Travel Speeds:	Gear	Forward		Reverse	
		mph	(km/h)	mph	(km/h)
With standard 17.5L-24 rear and 11L-15 front tires	1	3.3	5.3	3.0	4.8
	2	5.7	9.2	5.1	8.2
	3	12.3	19.8	11.1	17.9
	4	22.4	36.1	20.2	32.5
With MFWD and 19.5L-24 (required) rear and 12.00-16.5 front tires	1	3.4	5.5	3.1	5.0
	2	5.9	9.5	5.3	8.5
	3	12.6	20.3	11.3	18.2
	4	23.0	37.0	20.7	33.3

Final Drives Planetary, inboard

Service Brakes: Hydraulic, applied with separate pedals; hydraulically equalized when both pedals are depressed. Wet disks and facings are fully enclosed and self-adjusting.

Secondary Brake: Mechanical "V" groove band located on differential ring gear

Steering: Hydrostatic power

Steering axle, regular:	
Turning radius (brake applied)	9 ft. 7 in. (2.92 m)
Clearance circle (brake applied)	28 ft. 10 in. (8.79 m)
Steering wheel turns, left to right	2.9
right to left	3.9
Axle oscillation stop to stop	22 deg.
Mechanical front-wheel drive (engaged):	
Turning radius (brake applied)	10 ft. 3 in. (3.12 m)
Clearance circle (brake applied)	29 ft. 3 in. (8.92 m)
Steering wheel turns, left to right	3.3
right to left	3.8
Axle oscillation stop to stop	22 deg.

Hydraulic System: Open-center

Pressure, main relief	2500 psi (17 238 kPa) (175.8 kg/cm ²)
Pump	Gear type
Flow @ 2200 rpm	34 gpm (2.15 L/s)
Filter, return oil ...	10 micron, steel-enclosed replaceable element

Hydraulic Cylinders:	Bore		Stroke		Rod	
	In.	(mm)	In.	(mm)	In.	(mm)
Loader boom (2)	3.15	80	29.8	757	1.77	45
Loader bucket (1)	3.54	90	28.2	716	1.77	45
Backhoe boom (1)	4.53	115	34.8	883	1.97	50
Backhoe crowd (1)	3.94	100	33.0	838	1.97	50
Backhoe bucket (1)	3.54	90	31.0	788	1.97	50
Backhoe swing (2)	3.94	100	10.9	278	1.97	50
Backhoe extendable dipper (1)	2.5	64	48.0	1220	1.25	32
Backhoe stabilizers (2)	3.54	90	16.9	431	1.77	45
Steering (1) regular axle	2.0	51	9.5	241	1.0	25
Steering (1) MFWD	2.0	51	12.6	320	1.0	25

Tires:	Front	Rear
	7.50/8.00, 10 PR, F3	14.9-24, 6 PR, R4
11L-15, 8 PR, F3	16.9-24, 6 PR, R3	
11L-15, 12 PR, F3	16.9-24, 6 PR, R4	
11L-16, 12 PR, F3	16.9-24, 8 PR, R4	
12.5L-15, 8 PR, L1	17.5L-24, 10 PR, R4	
MFWD	12.00-16.5, 8 PR, R4 19.5L-24, 8 PR, R4	

Wheel Treads:

Front	69 in. (1750 mm)
Rear	64 in. (1625 mm)
MFWD—Front	68 in. (1730 mm)
—Rear	69 in. (1750 mm)

Wheelbase 83 in. (2110 mm)

Axle Ratings:	Static Rating	Dynamic Rating	SAE J43
Front	56,000 lb. (25 500 kg)	56,000 lb. (25 500 kg)	9800 lb. (4500 kg)
Rear	43,500 lb. (19 800 kg)	58,000 lb. (26 400 kg)	12,500 lb. (5700 kg)

Capacities:

	U.S.	Liters
Fuel tank	26 gal.	98
Engine coolant	17 qt.	16
Engine oil including filter	9 qt.	8.5
Torque converter and reverser system	8 qt.	7

Additional Standard Equipment:

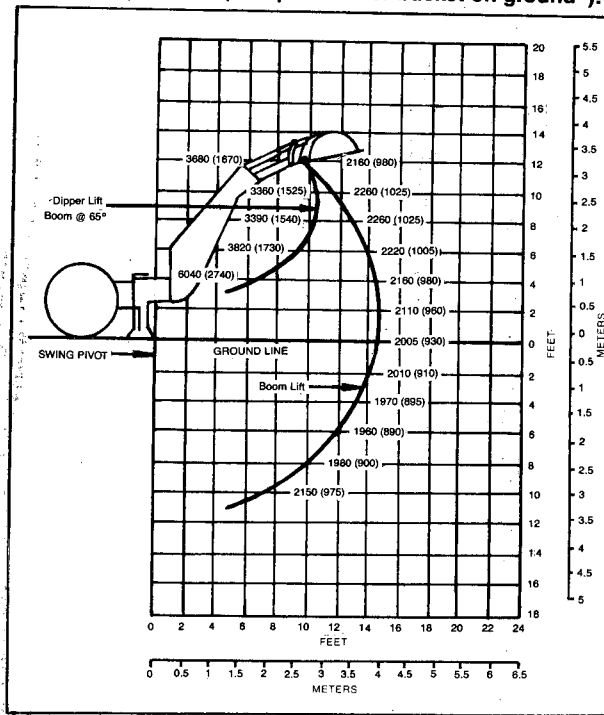
- Air cleaner restriction indicator
- Air cleaner, dry type w/safety element and precleaner
- Alternator, 51-amp w/transistorized voltage regulator
- Antifreeze to -34° (-37°C)
- Backhoe boom transport lock
- Battery, 110-minute reserve capacity
- Differential lock
- Electric fuel shutoff
- Emergency/parking brake
- Engine sideshields
- Foot and hand throttles
- Fuel gauge
- Fuel tank sump w/easy access drain
- Hourmeter
- Hydraulic self-leveling loader
- Hydrostatic power steering
- Key start switch
- Lights:
 - Halogen driving lights
 - Taillight
- Loader bucket level indicator
- Monitor for:
 - Alternator
 - Engine coolant temperature
 - Engine oil pressure
 - Hydraulic filter
 - Parking brake
 - Torque converter temperature
- Muffler, under hood w/vertical exhaust and rain cap
- Multiple fuse protected electrical system—12 volt

SAE Operating Weight 12,400 lb. (5625 kg)

310C BACKHOE LOADER LIFTING CAPACITIES

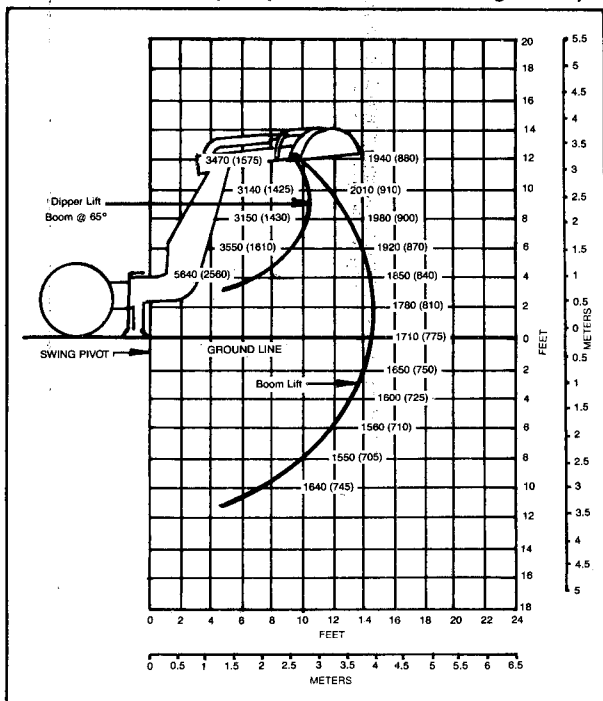
Lifting Capacity Ratings made from bucket hinge pin, loader bucket and stabilizer on firm, level ground. Lifting capacities are 87 percent of the maximum lift over any point on the swing arc and do not exceed 75 percent of the tipping load. Angle between boom and ground at 65 degrees. Machine equipped with 24-in. (610 mm) trenching bucket, standard or optional dipperstick (as indicated below) and standard equipment.

Lift Capacity
Backhoe with standard dipperstick.
 Based on SAE J31 (except w/loader bucket on ground*).



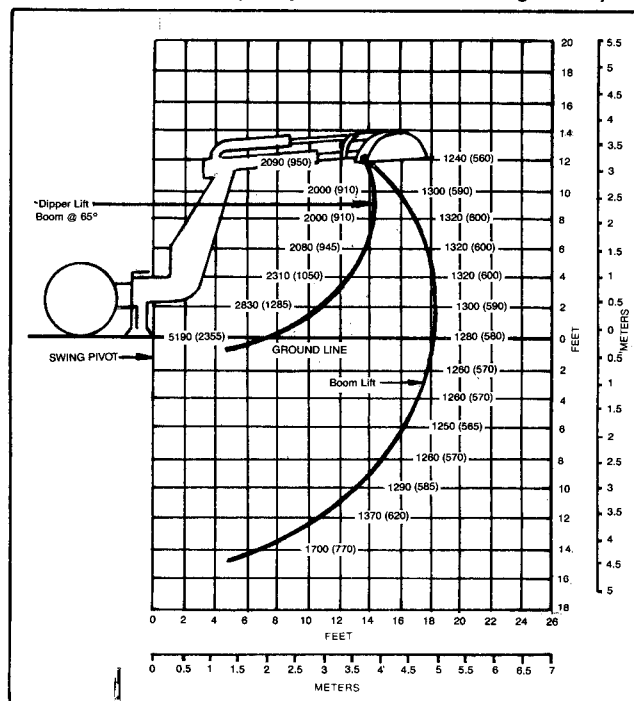
Rated lift capacities are in lb. (kg)
 Lift capacities are hydraulically limited.

Lift Capacity
Backhoe with extendable dipstick, retracted.
 Based on SAE J31 (except w/loader bucket on ground*).



Rated lift capacities are in lb. (kg)
 Lift capacities are hydraulically limited.

Lift Capacity
Backhoe with extendable dipstick, extended.
 Based on SAE J31 (except w/loader bucket on ground*).



Rated lift capacities are in lb. (kg)
 Lift capacities are hydraulically limited.

*Loader bucket on ground significantly improves side stability, therefore improving lift capacity to the side. Lift capacity over the rear is not affected.

310C BACKHOE LOADER

LOADER:

Operator control	Single lever
Rollback at ground level	40 degrees
Breakout force	8100 lb. (36.0 kN) (3674 kg)
Digging depth below ground, bucket level	4 in. (102 mm)
Lifting capacity, full height	5100 lb. (2320 kg)
Height to bucket hinge pin, max.	10 ft. 10 in. (3.30 m)
Height to top of canopy	8 ft. 5 in. (2.58 m)
Height to top of muffler	8 ft. 8 in. (2.64 m)
Bucket dump angle, max.	45 degrees
Dump clearance, bucket @ 45 degrees	8 ft. 10 in. (2.69 m)
Reach at full height, bucket @ 45 degrees	28 in. (711 mm)
Raising time to full height	3.3 sec.
Bucket dump time	1.1 sec.
Bucket lowering time (power down)	2.3 sec.

BUCKETS

Loader:	Width		Heaped Capacity	
	In.	(mm)	Cu. Yd.	(m ³)
General purpose	92	(2340)	1.0	(0.76)
	92	(2340)	1.3	(1.00)
Long lip	89.4	(2270)	1.25	(0.96)
Backhoe:			Cu. Ft.	(m ³)
Standard-duty	12	(305)	3.0	(0.08)
	16	(406)	4.5	(0.13)
	18	(457)	3.0	(0.08)
	24	(610)	7.5	(0.21)
	24	(610)	8.8	(0.25)
	30	(762)	10.0	(0.28)
Heavy-duty	36	(914)	10.0	(0.28)
	36	(914)	14.5	(0.41)
	18	(457)	5.1	(0.14)
	24	(610)	7.5	(0.21)
	30	(762)	10.0	(0.28)
	36	(914)	10.0	(0.28)
	36	(914)	14.5	(0.41)

Optional or Special Equipment:

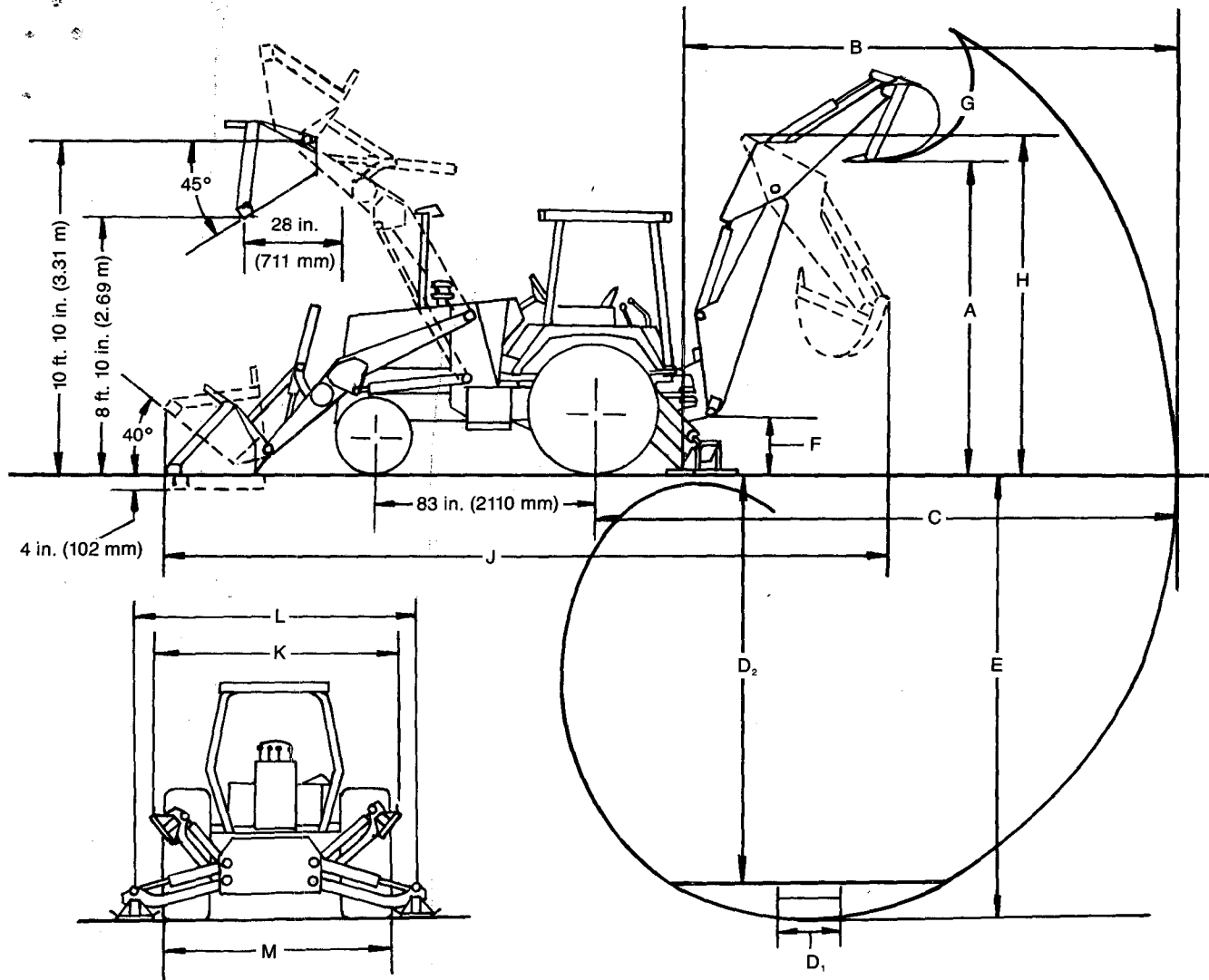
Altitude-compensating engine turbocharger
 Automatic return-to-dig
 Backup alarm
 Cab pressurizer
 Cab with:
 Fabric-covered swivel seat, suspension or non-suspension
 Front defroster fan
 Front and rear wipers
 Integral ROPS/FOPS
 Standard heater—19,000 Btu (5.6 kW)
 Cold-weather starting aid, remote mounted
 Deluxe cab interior trim package
 Deluxe heater w/fresh air intake—40,000 Btu (11.7 kW)
 Engine coolant heater
 Extendable dipperstick for backhoe
 Fire extinguisher
 Front counterweight, 400 lb. (181 kg)
 Heavy-duty batteries
 Instrument panel vandal cover
 Lights:
 Front rear turn signal lights
 Rear halogen brake lights
 Rear halogen work lights
 Rotating beacon light
 Mechanical front-wheel drive
 Rear defroster fan
 Rearview mirror, inside mounted, curved, heavy-duty
 Rear wheel spacers for tire chain clearance
 Reversible stabilizer pads
 Seat, vinyl covered, suspension/non-suspension or rigid-mounted
 Tachometer/hourmeter
 SMV emblem
 3-in. (76 mm) seat belt
 Three- or four-lever, pedal-swing backhoe controls
 Toolbox

Additional Available Equipment:*

Auxiliary bolt-on cutting edge for loader buckets
 Auxiliary hydraulic valves and circuit for loader and backhoe
 Backhoe lift eye
 Bolt-on teeth for loader bucket
 Front windshield and door kit
 Grille guard
 Lateral slides for operator's seat
 Loader bucket chain hooks, outer
 Longer dippersticks
 Light materials/snow loader buckets
 Multipurpose loader buckets
 Radio or radio cassette

*See your John Deere dealer for further information

310C BACKHOE LOADER SPECIFICATION AND DIMENSIONS



Key:

	Backhoe	Retracted	Extended
A. Loading height; truck loading position	10 ft. 10 in. (3.30 m)	11 ft. 1 in. (3.38 m)	13 ft. 1 in. (3.99 m)
B. Reach from center of swing mast	17 ft. 6 in. (5.34 m)	17 ft. 7 in. (5.36 m)	21 ft. 1 in. (6.43 m)
C. Reach from center of rear axle	20 ft. 10 in. (6.35 m)	20 ft. 10 in. (6.35 m)	24 ft. 5 in. (7.44 m)
D. Digging depth (SAE):			
(1) 2-ft. (610 mm) flat bottom	14 ft. 2 in. (4.32 m)	14 ft. 2 in. (4.34 m)	18 ft. (5.49 m)
(2) 8-ft. (2440 mm) flat bottom	13 ft. (3.96 m)	13 ft. (3.96 m)	17 ft. 1 in. (5.21 m)
E. Maximum digging depth	14 ft. 3 in. (4.34 m)	14 ft. 3 in. (4.34 m)	18 ft. 2 in. (5.58 m)
F. Ground clearance, minimum	13 in. (330 mm)	13 in. (330 mm)	13 in. (330 mm)
G. Bucket rotation	160 or 180 degrees	160 or 180 degrees	160 or 180 degrees
H. Transport height	11 ft. 5 in. (3.48 m)	11 ft. 7 in. (3.53 m)	11 ft. 7 in. (3.53 m)
J. Overall length, transport	22 ft. 11 in. (7.01 m)	22 ft. 11 in. (7.01 m)	22 ft. 11 in. (7.01 m)
K. Stabilizer width—transport	8 ft. (2.44 m)	8 ft. (2.44 m)	8 ft. (2.44 m)
L. Stabilizer spread—operating	8 ft. 11 in. (2.72 m)	8 ft. 11 in. (2.72 m)	8 ft. 11 in. (2.72 m)
M. Overall width (less loader bucket)	82 in. (2080 mm)	82 in. (2080 mm)	82 in. (2080 mm)
Digging force, bucket cylinder (power dig position)	10,800 lb. (48 kN) (4900 kg)	10,800 lb. (48 kN) (4900 kg)	10,800 lb. (48 kN) (4900 kg)
Digging force, crowd cylinder	6,200 lb. (28 kN) (2812 kg)	6,200 lb. (28 kN) (2812 kg)	4,300 lb. (19 kN) (1950 kg)
Swing arc	180 degrees	180 degrees	180 degrees
Operator control	Two levers	Right foot treadle	Right foot treadle
Bucket positions	12 or 21 deg. rollback	8 or 17 deg. rollback	12 or 22 deg. rollback
Stabilizer angle rearward	7 degrees	7 degrees	7 degrees
Lifting capacity, dipper lifting, boom @ 65°	3,900 lb. (1770 kg)	3,600 lb. (1630 kg)	2,300 lb. (1045 kg)
Leveling angle	11 degrees	11 degrees	11 degrees

Note: Backhoe specifications are with 24-in. (610 mm) standard bucket.



LUFKIN-TYPEWRITER & CASH REGISTER CO.

2212 EAST DENMAN AVENUE
P. O. DRAWER 1406
LUFKIN, TEXAS 75901

VOL 012 PAGE 504

10:30 AM

AUG 15 1986

GRACE BOSTICK, COUNTY CLERK
TYLER COUNTY, TEXAS

BY: *Grace Bostick*

Tyler County Clerk
Courthouse
Woodville, Texas 75979

Attn: Grace Bostick
Bid on typewriter enclosed

LUFKIN TYPEWRITER & CASH REGISTER CO.

2212 EAST DENMAN AVE.
LUFKIN, TEXAS 75901
TELEPHONES 634-9113 AND 634-9124

August 13, 1986

VOL 012 PAGE 505

Tyler County Clerk
Courthouse
Woodville, Texas 75979

Attention: Grace Bostick

Gentlemen:

Please consider this our bid on the following machine:

Royal 5005XL electronic print wheel typewriter with two-line memory correction.....	\$699.00
Less 10% discount.....	-\$ 69.90
	<u>\$629.10</u>
Less trade-in typewriter	-\$ 50.00
TOTAL	<u>\$579.10</u>

We hope to have the pleasure of furnishing you a typewriter
in the near future. Thank you for the opportunity to submit
this bid.

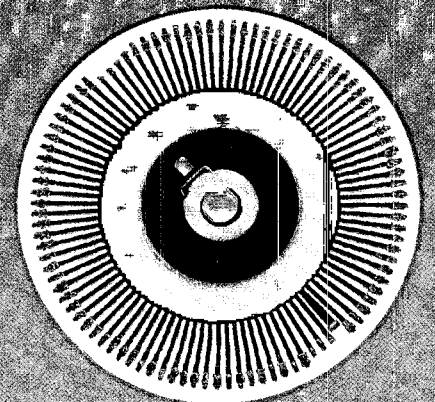
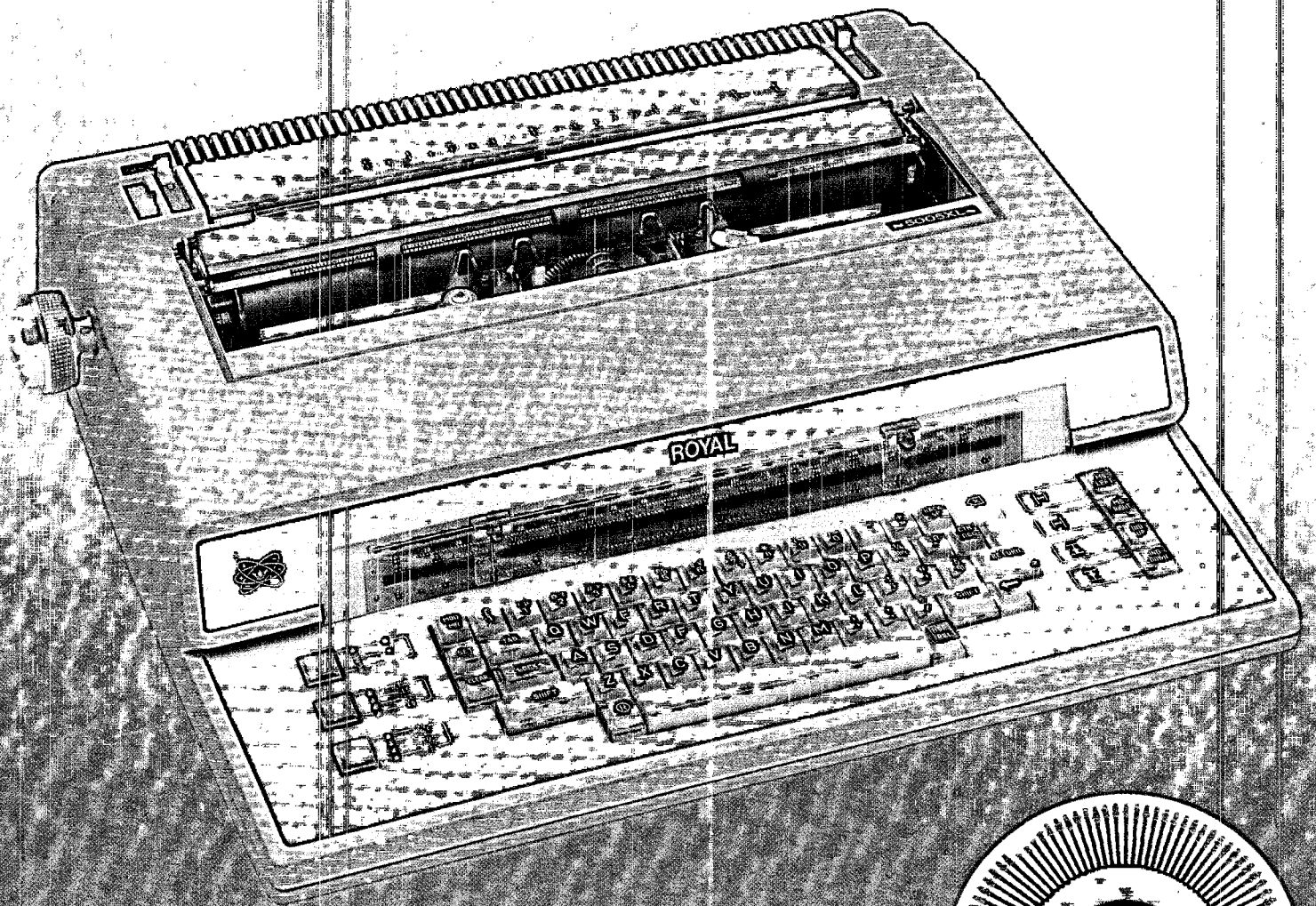
Sincerely,

Lufkin Typewriter & Cash Register Company

D.C. Satterwhite /lp
D.C. Satterwhite, Sr.
President

Enclosures
DCS:lp

Royal 5005XL All-Electronic Print Wheel Typewriter



Royal 5005XL

**Featuring new
and expanded
capabilities**

- **Automatic Centering**
- **Automatic Carrier Return**
- **Automatic Relocation**
- **100-Character Printability**

Royal, a leading innovator in the office equipment industry for over 75 years now offers advanced electronic technology with the Royal 5005XL. This technology has been used to create a smarter, quieter, faster and far more productive typewriter to meet the needs of today's modern office. Yet, for all of its advanced electronic automation, the Royal 5005XL is priced competitively with less sophisticated, electro-mechanical machines. Royal offers the affordable intelligent choice in electronic typing. Don't buy any typewriter until you compare the features of the Royal 5005XL.

Microprocessor Technology

Royal replaced hundreds of moving parts with state-of-the-art electronics. That means more reliability, productivity and simplicity.

Two-Line Memory Correction

132-character memory enables complete automatic correction. The Royal 5005XL also corrects functions such as carriage returns, backspaces, tabs, as well as characters.

Automatic Centering

Automatically centers between margins, between tabs and flush with the right margin for justification of short phrases or columns.

Automatic Carrier Return

Automatically returns the carrier to the next line following the last word, or hyphenated word, on a line.

Automatic Relocation

When the relocation key is depressed after a correction is made, the carrier is automatically returned to the last typed character.

100-Character Printability

In addition to the conventional characters, there are symbols for Omega, Mu, less than, greater than, English pound, Japanese yen, Exponents 2 and 3.

Triple Pitch Plus Proportional Spacing

You get three standard sizes of type, 10, 12, and 15 pitch, for more distinctive typing, plus proportional spacing for a true "print shop" look.

Print Wheel

Interchangeable print wheels provide unsurpassed copy quality at a remarkably reduced noise level.

Automated Simplicity

To increase your productivity, the 5005XL gives you automatic decimal alignment, paper insertion, pitch selection, margin settings, impression control, all electronically selected from the keyboard.

Specifications

Paper Capacity: 16.5" • Typing Line: 13.2"
• Pitch: 10, 12, 15 & Proportional • 500 Hour Memory Retention • Colors: Autumn Haze and Royal Bronze • Ribbon: Correctable Ribbons, Single Pass, Multi-strike, Fabric • Vertical Spacing: 1, 1½, 2, 2½
• Dimensions: 22"W x 19.2"D x 6.8"H
• Weight: 41 lbs. • Electrical Requirements: 110 Volts, 60 Hz.

ROYAL VS. IBM®

See how the future compares with the past.

	ROYAL 5005XL	IBM Selectric® III
Microprocessor Electronics	Yes	No
Computer Interface Capability	Yes	No
Print Wheel	Yes	No
Multi-Line Correcting Memory	Yes	No
Type Pitches	4	2
Proportional Spacing	Yes	No
Automatic Centering	Yes	No
Automatic Carrier Return	Yes	No
Print Speed	18 cps	15.5 cps
All Keys Repeat	Yes	No
Automatic Paper Insert	Yes	No
Automatic Paper Eject	Yes	No
Automatic Decimal Tab	Yes	No
Electronic Impression Control	Yes	No
16-Character Keyboard Buffer	Yes	No
Programmed Format	Yes	No
Possible Machine Adjustments	38	300+

LUFKIN TYPEWRITER & CASH REGISTER CO.
P.O. Box 1406 - Ph. 634-9113
Lufkin, Texas 75901

ROYAL
SUBSIDIARY OF TA NORTH AMERICA

ARBM, INC.
1600 Route 22, P.O. Box 1630
Union, NJ 07083

NOTICE OF TIME AND PLACE OF MEETING

COMMISSIONERS COURT
TYLER COUNTY, TEXAS

THIS NOTICE POSTED IN ACCORDANCE WITH V. A. T. S. - ART. 6252-17

NOTICE is hereby given that Commissioners Court will hold it's
Special meeting on FRIDAY,, AUGUST 15 19 86 at 10:00 A. .M.
in the Commissioners Courtroom, First Floor, Tyler County Courthouse.

A G E N D A

1. APPROVE PAYING BILLS FROM AUDITORS OFFICE.
2. ACCEPT BID ON BACKHOE FOR PRECINCT IV.
3. OPEN BIDS ON TYPEWRITER FOR COUNTY CLERKS OFFICE.


8:10 AM

AUG 15 1986

GRACE BOSTICK, COUNTY CLERK
TYLER COUNTY, TEXAS

BY: *Sandra Matkin*

Sandra Matkin


Allen Sturrock, County Judge
Tyler County, Texas